

RWE

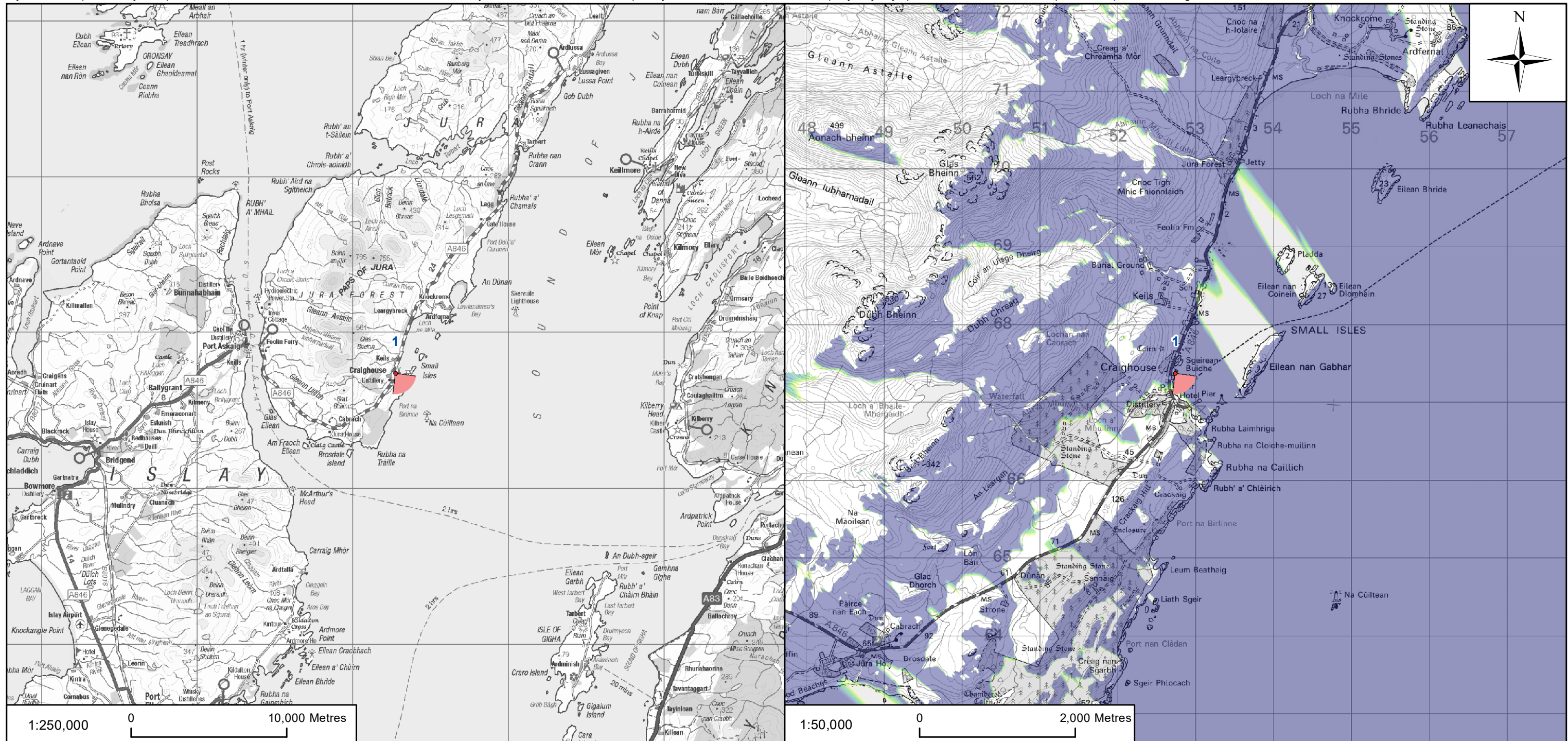
Clachaig Glen Wind Farm

Environmental Impact Assessment Report

Volume 2d

EIAR Visualisations

Figure: VP1.1



1:250,000 0 10,000 Metres

Wireline only, no photograph.

1:50,000 0 2,000 Metres

Viewpoint 1:
On a grassy area at the shore east of the A846, close to a small stone boathouse approximately 300m north of the Craighouse Post Office.

KEY:

- Proposed Turbine Location
- ▲ Viewpoint Location

Number of Turbine Tips Visible

1	5	9
2	6	10
3	7	11
4	8	12

Tripod Photograph

Description of Viewpoint Location

Client: **RWE**

Project: **CLACHAIG GLEN WIND FARM ENVIRONMENTAL IMPACT ASSESSMENT**

Title: **FIGURE VP1.1 VIEWPOINT 1 - CRAIGHOUSE, JURA**

AECOM
One Trinity Gardens
Quayside
Newcastle, NE1 2HF
Tel +44 (0) 191 224 6500
Fax +44 (0) 191 224 6599
www.aecom.com

Drawn: LC
Checked: LC

Verified: AR
Approved: SW

Date: JANUARY 2022
Scale at A3: 1:250,000 / 1:50,000

Drawing Number: CG_220105_EIAVP1.1_v1
A3



Clachaig Glen Wind Farm

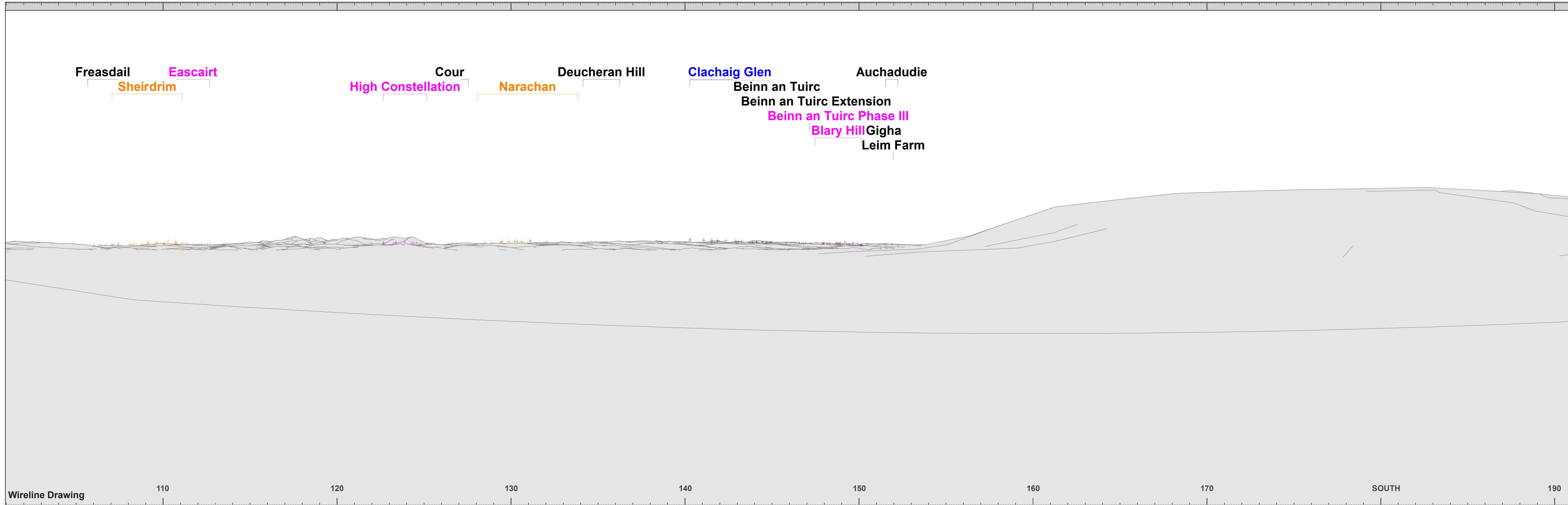
Environmental Impact Assessment Report

Volume 2d

EIAR Visualisations

Figures: VP1.2; VP1.3

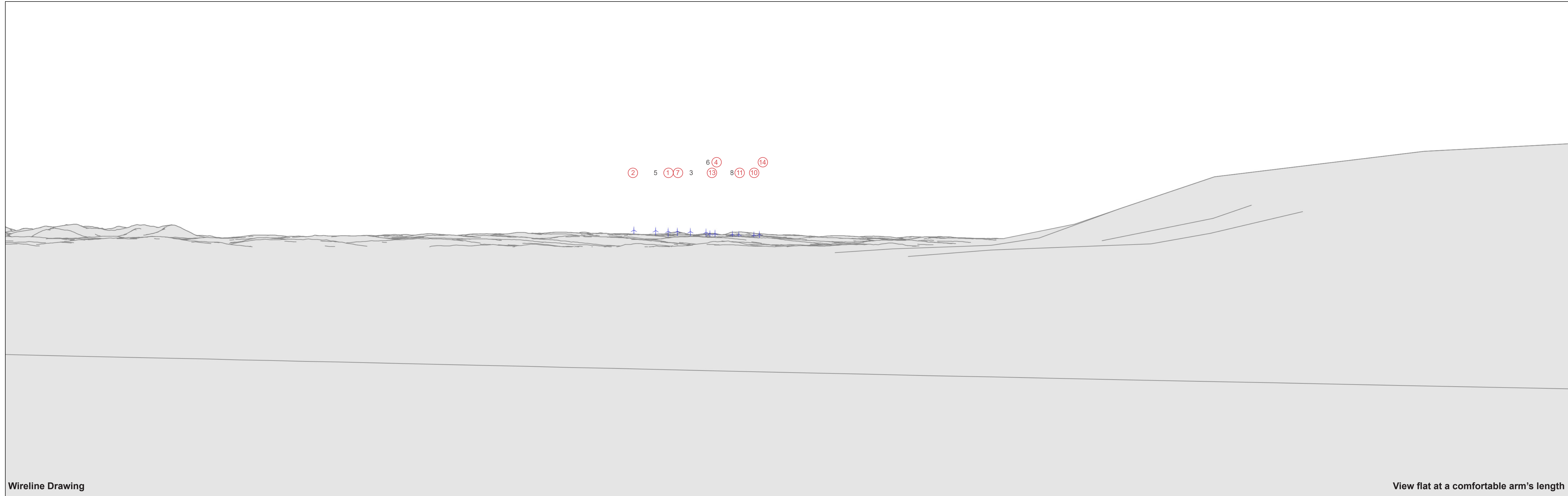




Wireline Drawing

Figure VP1.2 - Cumulative Wireline Drawing
Viewpoint 1: Craighouse, Jura

OS reference:	152740 E 667370 N	Horizontal field of view	90° (cylindrical projection)	Camera:	-
Eye Level:	3.22m AOD	Principal distance:	522 mm	Lens:	-
Direction of view:	146°	Paper size:	841 x 297 mm (half A1)	Camera height:	1.5 m AGL
Nearest turbine:	31.07 km	Correct printed image size:	820 x 250mm	Date and time:	-



Wireline Drawing

View flat at a comfortable arm's length

Figure VP1.3 - Wireline Drawing (Planar Projection)
Viewpoint 1: Craighouse, Jura

- 3 Turbine with no aviation light
- ④ Turbine with aviation light screened by topography
- ⑦ Turbine with aviation light theoretically visible

OS reference:	152740 E 667370 N	Horizontal field of view:	53.5° (planar projection)	Camera:	-
Eye Level:	3.22m AOD	Principal distance:	812.5 mm	Lens:	-
Direction of view:	146°	Paper size:	841 x 297 mm (half A1)	Camera height:	1.5 m AGL
Nearest turbine:	31.07 km	Correct printed image size:	820 x 260mm	Date and time:	-

RWE

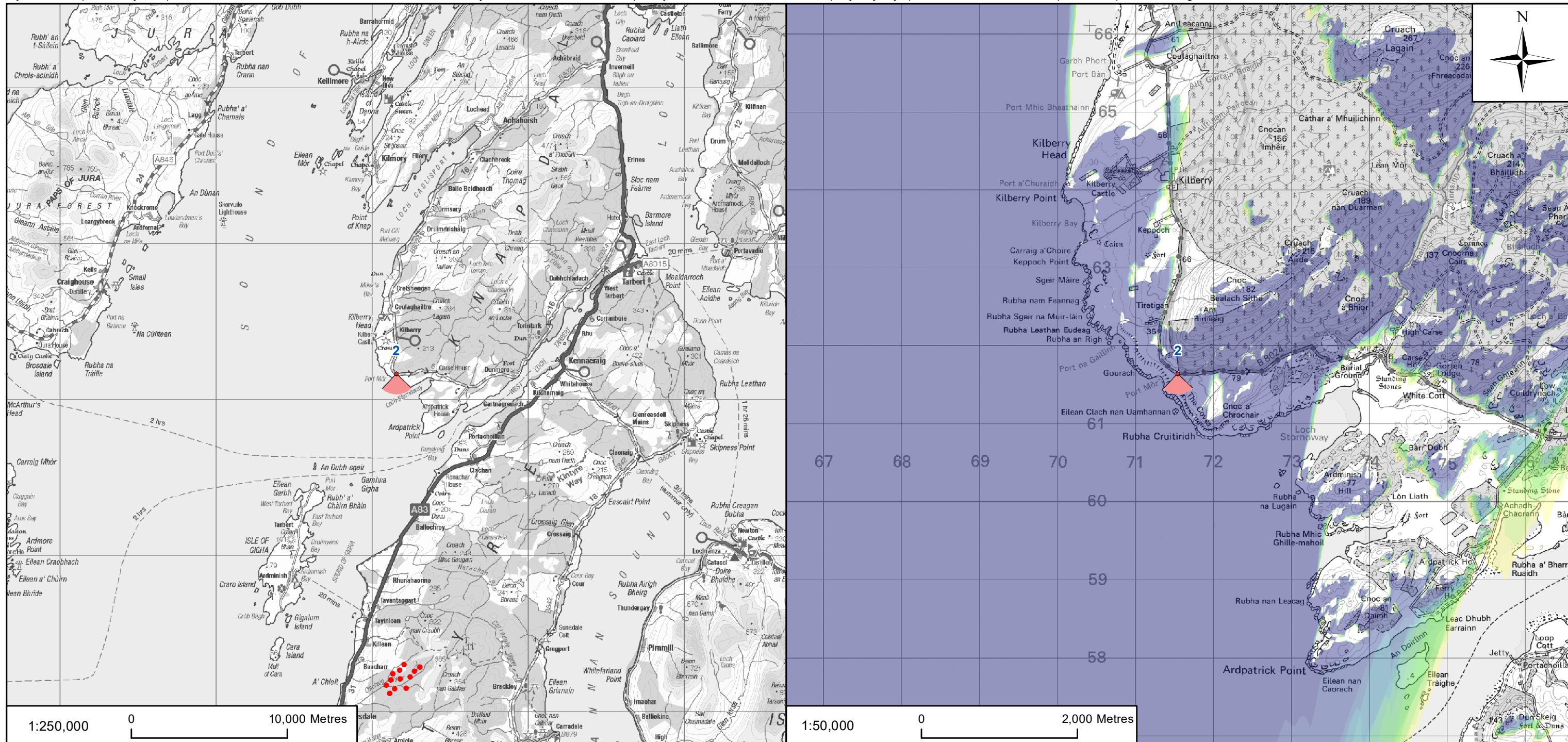
Clachaig Glen Wind Farm

Environmental Impact Assessment Report

Volume 2d

EIAR Visualisations

Figure: VP2.1



Tripod Photograph

Viewpoint 2:
From the B8024, south of Kilberry, on a verge to the south of the highway.

Description of Viewpoint Location

KEY:

- Proposed Turbine Location
- ▲ Viewpoint Location

Number of Turbine Tips Visible

1	5	9
2	6	10
3	7	11
4	8	12

Client:	RWE
Project:	CLACHAIG GLEN WIND FARM ENVIRONMENTAL IMPACT ASSESSMENT

Title:	FIGURE VP2.1 VIEWPOINT 2 - B8024 SOUTH OF KILBERRY
--------	---

AECOM	Tel +44 (0) 191 224 6500 Fax +44 (0) 191 224 6599 www.aecom.com
One Trinity Gardens Quayside Newcastle, NE1 2HF	

Drawn:	LC	Checked:	LC
Verified:	AR	Approved:	SW
Date:	JANUARY 2022	Scale at A3:	1:250,000 / 1:50,000
Drawing Number:	CG_220105_EIAVP2.1_v1		A3



Clachaig Glen Wind Farm

Environmental Impact Assessment Report

Volume 2d

EIAR Visualisations

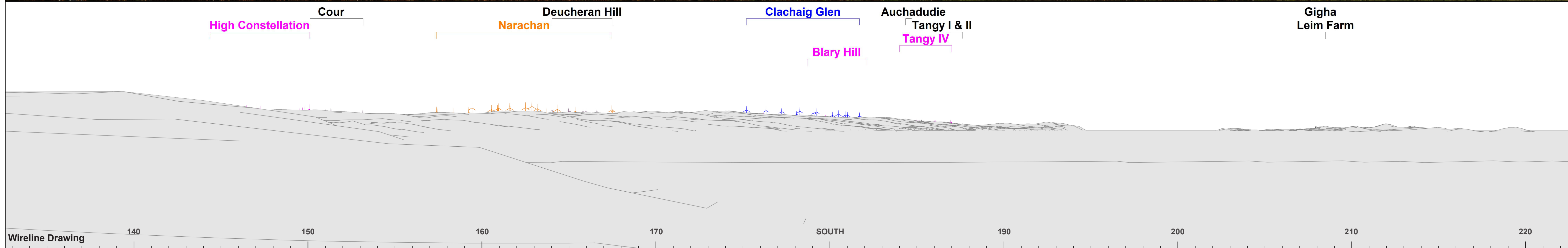
Figures: VP2.2; VP2.3; VP2.4





Baseline Photograph

This image provides landscape and visual context only



Wireline Drawing

Figure VP2.2(Panel 1 of 2) - Cumulative Wireline
Viewpoint 2: B8024 south of Kilberry

OS reference:	171541 E 661638 N	Horizontal field of view:	90° (cylindrical projection)	Camera:	Canon EOS 5D Mk 3
Eye Level:	41.17m AOD	Principal distance:	522 mm	Lens:	Sigma 50mm (f1.4)
Direction of view:	177.8°	Paper size:	841 x 297 mm (half A1)	Camera height:	1.5 m AGL
Nearest turbine:	18.62 km	Correct printed image size:	820 x 130mm	Date and time:	19/09/20 18:20

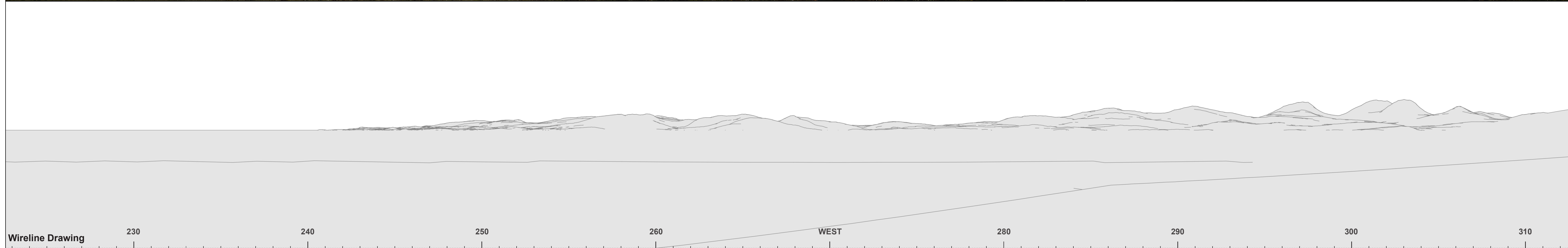


Figure VP2.2(Panel 2 of 2) - Cumulative Wireline
Viewpoint 2: B8024 south of Kilberry

OS reference:	171541 E 661638 N	Horizontal field of view:	90° (cylindrical projection)	Camera:	Canon EOS 5D Mk 3
Eye Level:	41.17m AOD	Principal distance:	522 mm	Lens:	Sigma 50mm (f1.4)
Direction of view:	177.8°	Paper size:	841 x 297 mm (half A1)	Camera height:	1.5 m AGL
Nearest turbine:	18.62 km	Correct printed image size:	820 x 130mm	Date and time:	19/09/20 18:20

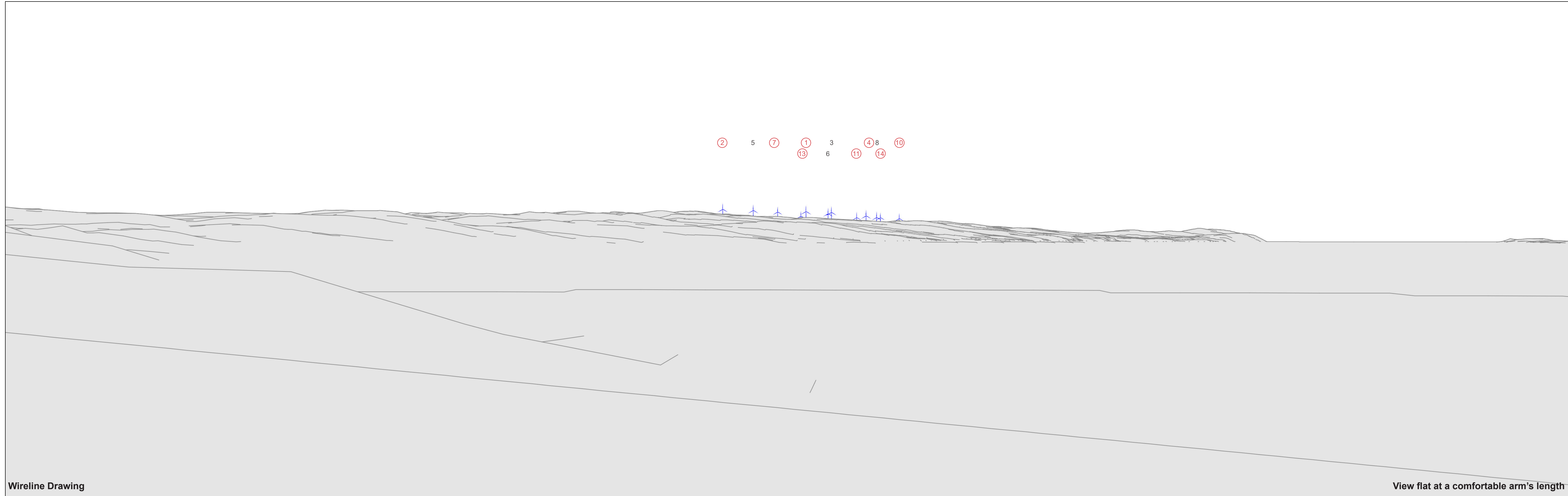


Figure VP2.3 - Wireline Drawing
Viewpoint 2: B8024 south of Kilberry

- 3 Turbine with no aviation light
- ④ Turbine with aviation light screened by topography
- ⑦ Turbine with aviation light theoretically visible

OS reference:	171541 E 661638 N	Horizontal field of view:	53.5° (planar projection)	Camera:	Canon EOS 5D Mk 3
Eye Level:	41.17m AOD	Principal distance:	812.5 mm	Lens:	Sigma 50mm (f1.4)
Direction of view:	177.8°	Paper size:	841 x 297 mm (half A1)	Camera height:	1.5 m AGL
Nearest turbine:	18.62 km	Correct printed image size:	820 x 260mm	Date and time:	19/09/20 18:20



Photomontage

View flat at a comfortable arm's length

Figure VP2.4 - Photomontage
Viewpoint 2: B8024 south of Kilberry

OS reference:	171541 E 661638 N	Horizontal field of view:	53.5° (planar projection)	Camera:	Canon EOS 5D Mk 3
Eye Level:	41.17m AOD	Principal distance:	812.5 mm	Lens:	Sigma 50mm (f1.4)
Direction of view:	177.8°	Paper size:	841 x 297 mm (half A1)	Camera height:	1.5 m AGL
Nearest turbine:	18.62 km	Correct printed image size:	820 x 260mm	Date and time:	19/09/20 18:20

RWE

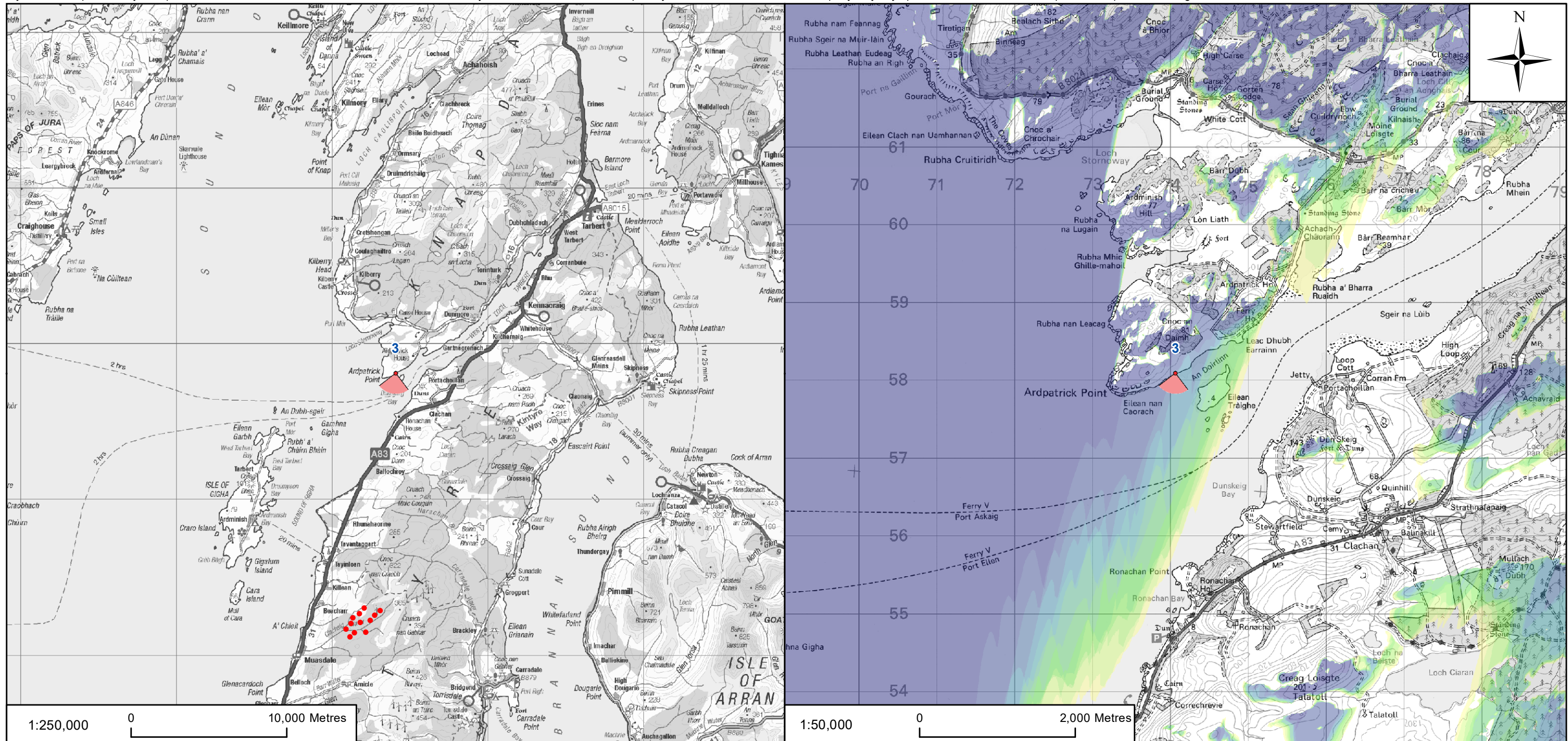
Clachaig Glen Wind Farm

Environmental Impact Assessment Report

Volume 2d

EIAR Visualisations

Figure: VP3.1



Tripod Photograph

Viewpoint 3:
 From a location next to the coast along a faint track. The route taken was from the south end of the public road, north of Ardpatrik House, continuing along the track alongside the coast for 2.2km, passing Ferry House and the tidal island of Eilean Traighe. The viewpoint is adjacent to the gate at the point where the track takes an abrupt turn inland and through the drystone dyke.

Description of Viewpoint Location

KEY:

- Proposed Turbine Location
- ▲ Viewpoint Location

Number of Turbine Tips Visible

1	5	9
2	6	10
3	7	11
4	8	12

Client: **RWE**

Project: **CLACHAIG GLEN WIND FARM ENVIRONMENTAL IMPACT ASSESSMENT**

Title: **FIGURE VP3.1 VIEWPOINT 3 - ARDPATRICK**

AECOM

One Trinity Gardens
 Quayside
 Newcastle, NE1 2HF

Tel +44 (0) 191 224 6500
 Fax +44 (0) 191 224 6599
 www.aecom.com

Drawn: LC	Checked: LC
Verified: AR	Approved: SW
Date: JANUARY 2022	Scale at A3: 1:250,000 / 1:50,000
Drawing Number: CG_220105_EI AVP3.1_v1	A3



Clachaig Glen Wind Farm

Environmental Impact Assessment Report

Volume 2d

EIAR Visualisations

Figures: VP3.2; VP3.3



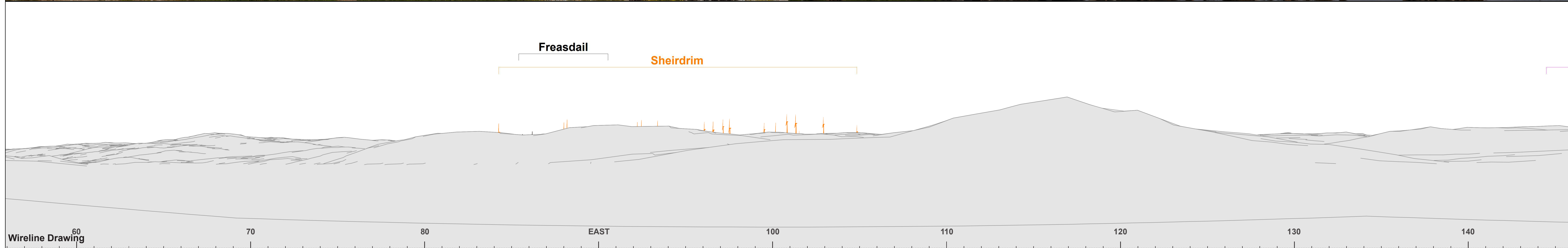


Figure VP3.2(Panel 1 of 2) - Cumulative Wireline Viewpoint 3: Ardpatrik

OS reference:	174063 E 658086 N	Horizontal field of view:	90° (cylindrical projection)	Camera:	Canon EOS 5D Mk 2
Eye Level:	3.29m AOD	Principal distance:	522 mm	Lens:	Canon 50mm (f1.4)
Direction of view:	191°	Paper size:	841 x 297 mm (half A1)	Camera height:	1.5 m AGL
Nearest turbine:	15.19 km	Correct printed image size:	820 x 130mm	Date and time:	01/06/21 15:41

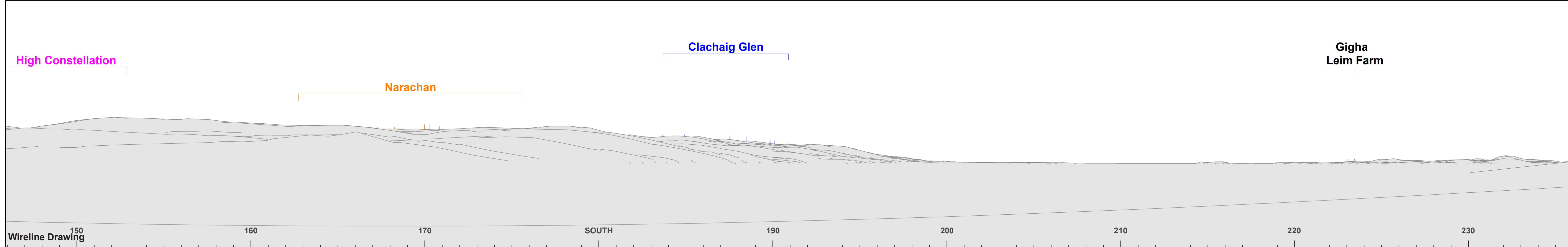
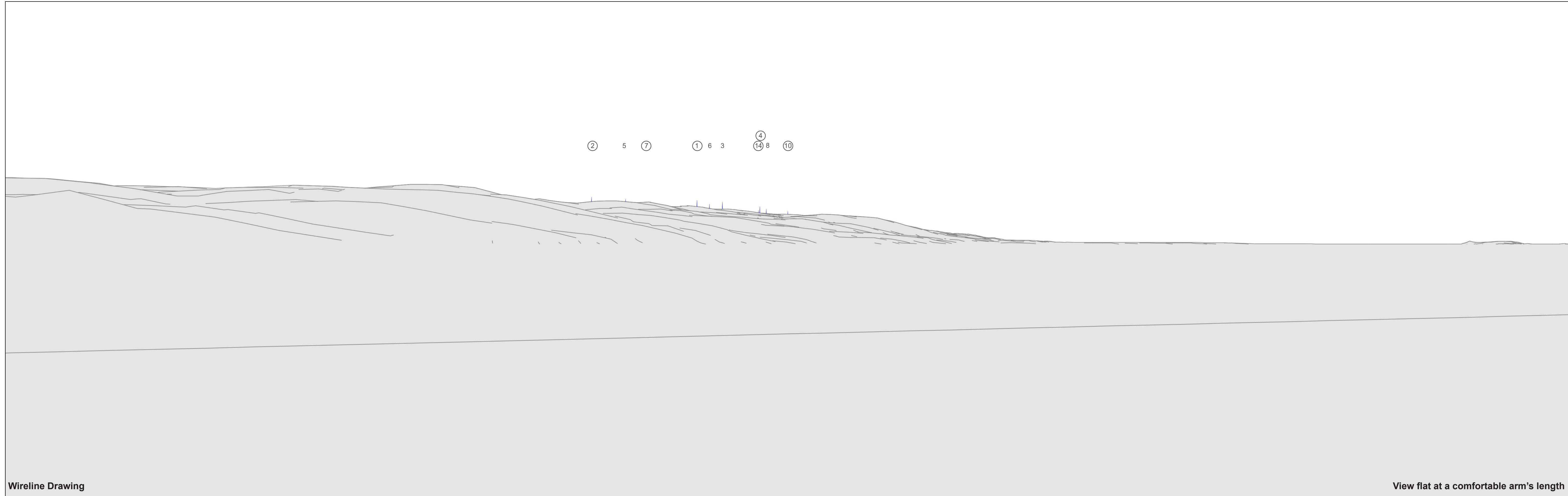


Figure VP3.2(Panel 2 of 2) - Cumulative Wireline
Viewpoint 3: Ardpatrik

OS reference:	174063 E 658086 N	Horizontal field of view:	90° (cylindrical projection)	Camera:	Canon EOS 5D Mk 2
Eye Level:	3.29m AOD	Principal distance:	522 mm	Lens:	Canon 50mm (f1.4)
Direction of view:	191°	Paper size:	841 x 297 mm (half A1)	Camera height:	1.5 m AGL
Nearest turbine:	15.19 km	Correct printed image size:	820 x 130mm	Date and time:	01/06/21 15:41



Wireline Drawing

View flat at a comfortable arm's length

Figure VP3.3 - Wireline Drawing
Viewpoint 3: Ardpatrick

- 3 Turbine with no aviation light
- ④ Turbine with aviation light screened by topography
- ⑦ Turbine with aviation light theoretically visible

OS reference:	174063 E 658086 N	Horizontal field of view:	53.5° (planar projection)	Camera:	Canon EOS 5D Mk 2
Eye Level:	3.29m AOD	Principal distance:	812.5 mm	Lens:	Canon 50mm (f1.4)
Direction of view:	191°	Paper size:	841 x 297 mm (half A1)	Camera height:	1.5 m AGL
Nearest turbine:	15.19 km	Correct printed image size:	820 x 260mm	Date and time:	01/06/21 15:41

RWE

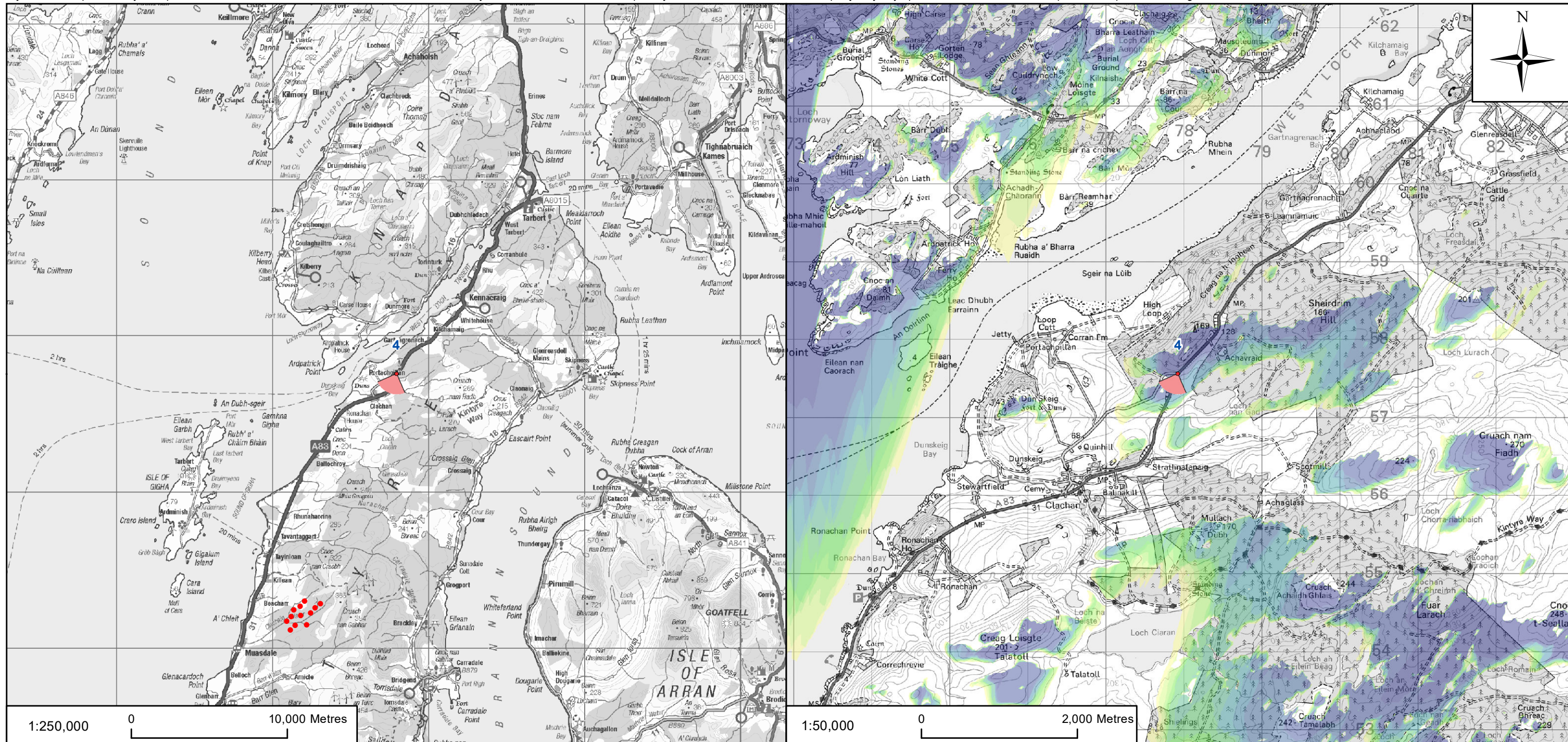
Clachaig Glen Wind Farm

Environmental Impact Assessment Report

Volume 2d

EIAR Visualisations

Figure: VP4.1



Tripod Photograph

Viewpoint 4:
From the junction with a minor road on the north-bound carriageway of the A83, north of Clachan.

Description of Viewpoint Location

KEY:

- Proposed Turbine Location
- ⬠ Viewpoint Location

Number of Turbine Tips Visible

1	5	9
2	6	10
3	7	11
4	8	12

Client: **RWE**

Project: **CLACHAIG GLEN WIND FARM ENVIRONMENTAL IMPACT ASSESSMENT**

Title: **FIGURE VP4.1 VIEWPOINT 4 - A83 NORTH OF CLACHAN**

AECOM
One Trinity Gardens
Quayside
Newcastle, NE1 2HF
Tel +44 (0) 191 224 6500
Fax +44 (0) 191 224 6599
www.aecom.com

Drawn: LC	Checked: LC
Verified: AR	Approved: SW
Date: JANUARY 2022	Scale at A3: 1:250,000 / 1:50,000
Drawing Number: CG_220105_EIAVP4.1_v1	A3



Clachaig Glen Wind Farm

Environmental Impact Assessment Report

Volume 2d

EIAR Visualisations

Figure: VP4.2



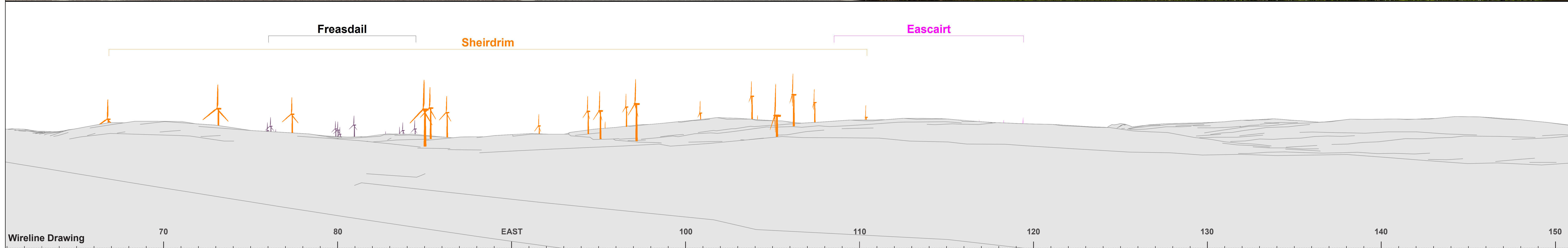


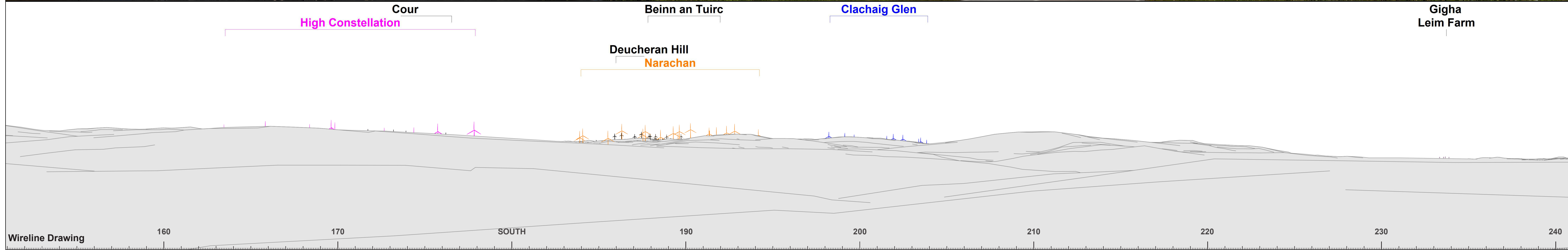
Figure VP4.2(Panel 1 of 2) - Cumulative Wireline Viewpoint 4: A83 north of Clachan

OS reference:	177920 E 657558 N	Horizontal field of view	90° (cylindrical projection)	Camera:	Canon EOS 5D Mk 2
Eye Level:	112.51m AOD	Principal distance:	522 mm	Lens:	Canon 50mm (f1.4)
Direction of view:	199.6°	Paper size:	841 x 297 mm (half A1)	Camera height	1.5 m AGL
Nearest turbine:	15.47 km	Correct printed image size:	820 x 130mm	Date and time:	07/10/15 11:54



Baseline Photograph

This image provides landscape and visual context only



Wireline Drawing

Figure VP4.2(Panel 2 of 2) - Cumulative Wireline Viewpoint 4: A83 north of Clachan

OS reference:	177920 E 657558 N	Horizontal field of view:	90° (cylindrical projection)	Camera:	Canon EOS 5D Mk 2
Eye Level:	112.51m AOD	Principal distance:	522 mm	Lens:	Canon 50mm (f1.4)
Direction of view:	199.6°	Paper size:	841 x 297 mm (half A1)	Camera height:	1.5 m AGL
Nearest turbine:	15.47 km	Correct printed image size:	820 x 130mm	Date and time:	07/10/15 11:54



Clachaig Glen Wind Farm

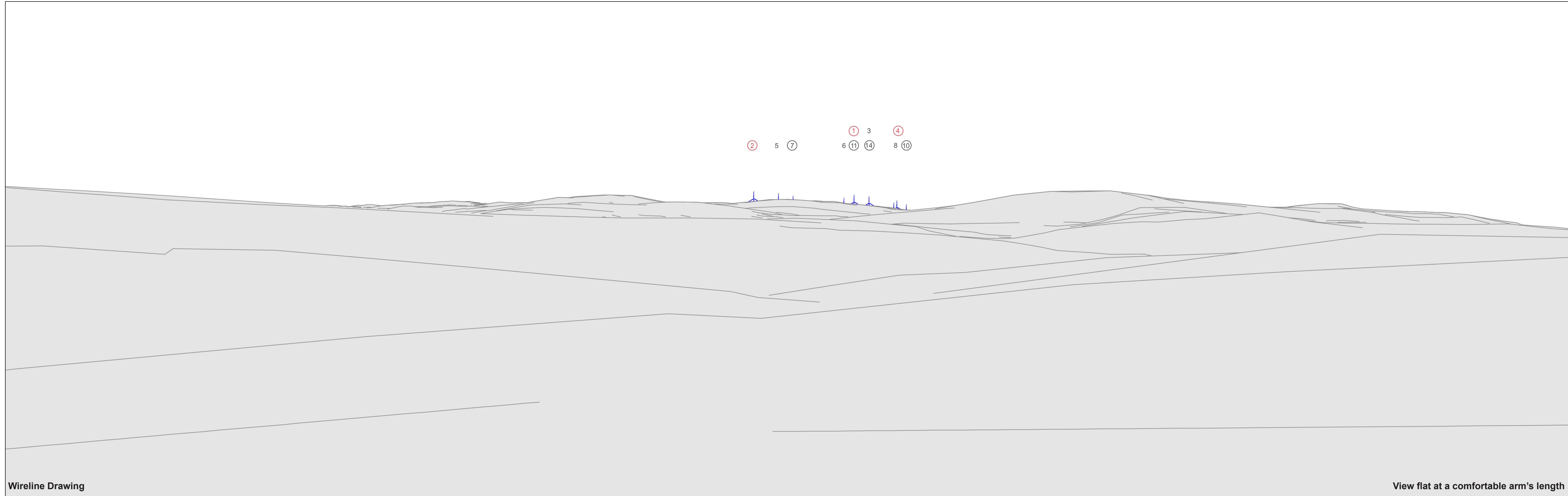
Environmental Impact Assessment Report

Volume 2d

EIAR Visualisations

Figures: VP4.3; VP4.4





Wireline Drawing

View flat at a comfortable arm's length

Figure VP4.3 - Wireline Drawing
Viewpoint 4: A83 north of Clachan

- 3 Turbine with no aviation light
- ④ Turbine with aviation light screened by topography
- ⑦ Turbine with aviation light theoretically visible

OS reference:	177920 E 657558 N	Horizontal field of view:	53.5° (planar projection)	Camera:	Canon EOS 5D Mk 2
Eye Level:	112.51m AOD	Principal distance:	812.5 mm	Lens:	Canon 50mm (f1.4)
Direction of view:	199.6°	Paper size:	841 x 297 mm (half A1)	Camera height:	1.5 m AGL
Nearest turbine:	15.47 km	Correct printed image size:	820 x 260mm	Date and time:	07/10/15 11:54



Photomontage

View flat at a comfortable arm's length

Figure VP4.4 - Photomontage
Viewpoint 4: A83 north of Clachan

OS reference:	177920 E 657558 N	Horizontal field of view:	53.5° (planar projection)	Camera:	Canon EOS 5D Mk 2
Eye Level:	112.51m AOD	Principal distance:	812.5 mm	Lens:	Canon 50mm (f1.4)
Direction of view:	199.6°	Paper size:	841 x 297 mm (half A1)	Camera height:	1.5 m AGL
Nearest turbine:	15.47 km	Correct printed image size:	820 x 260mm	Date and time:	07/10/15 11:54

