

**RWE**

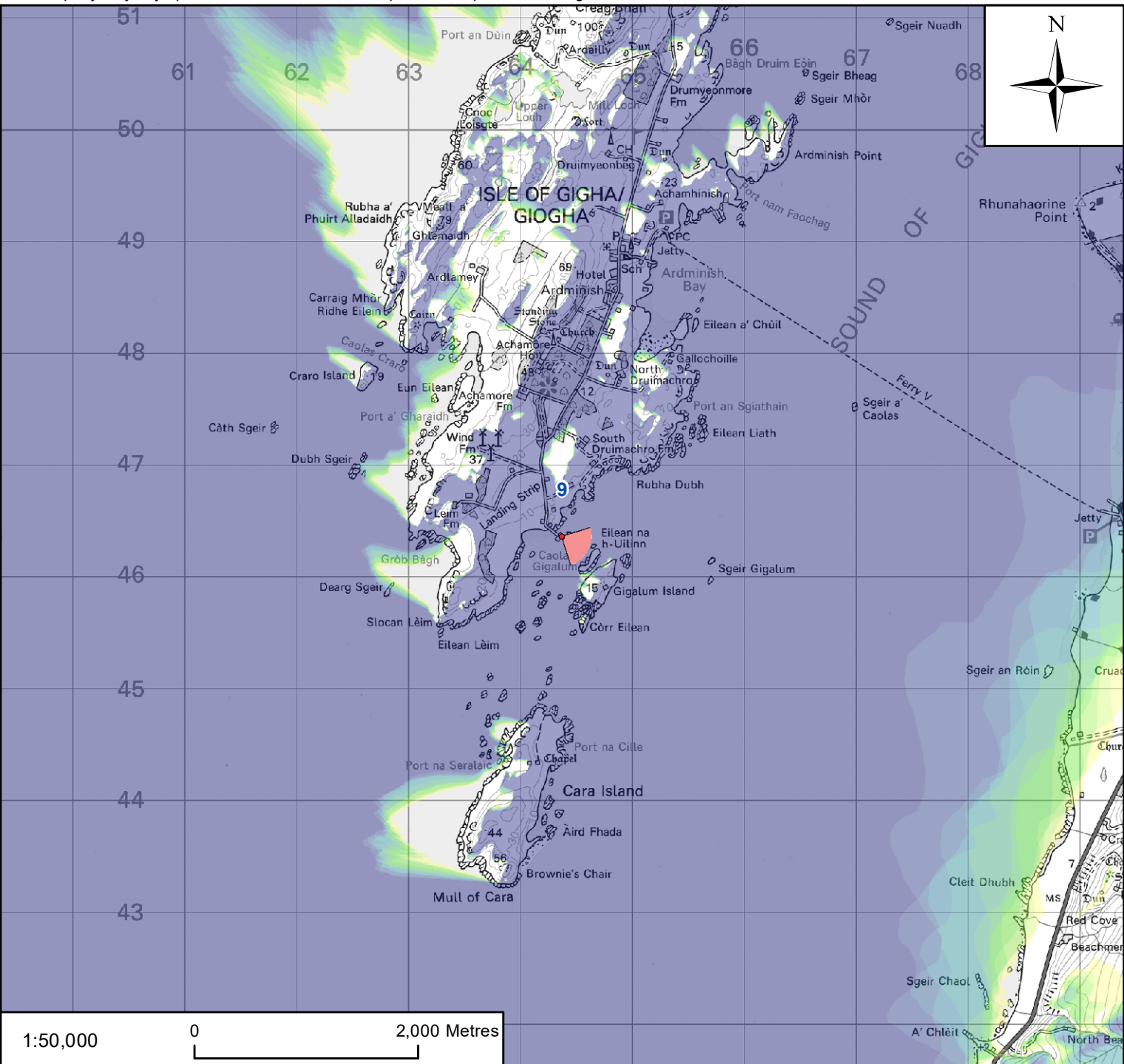
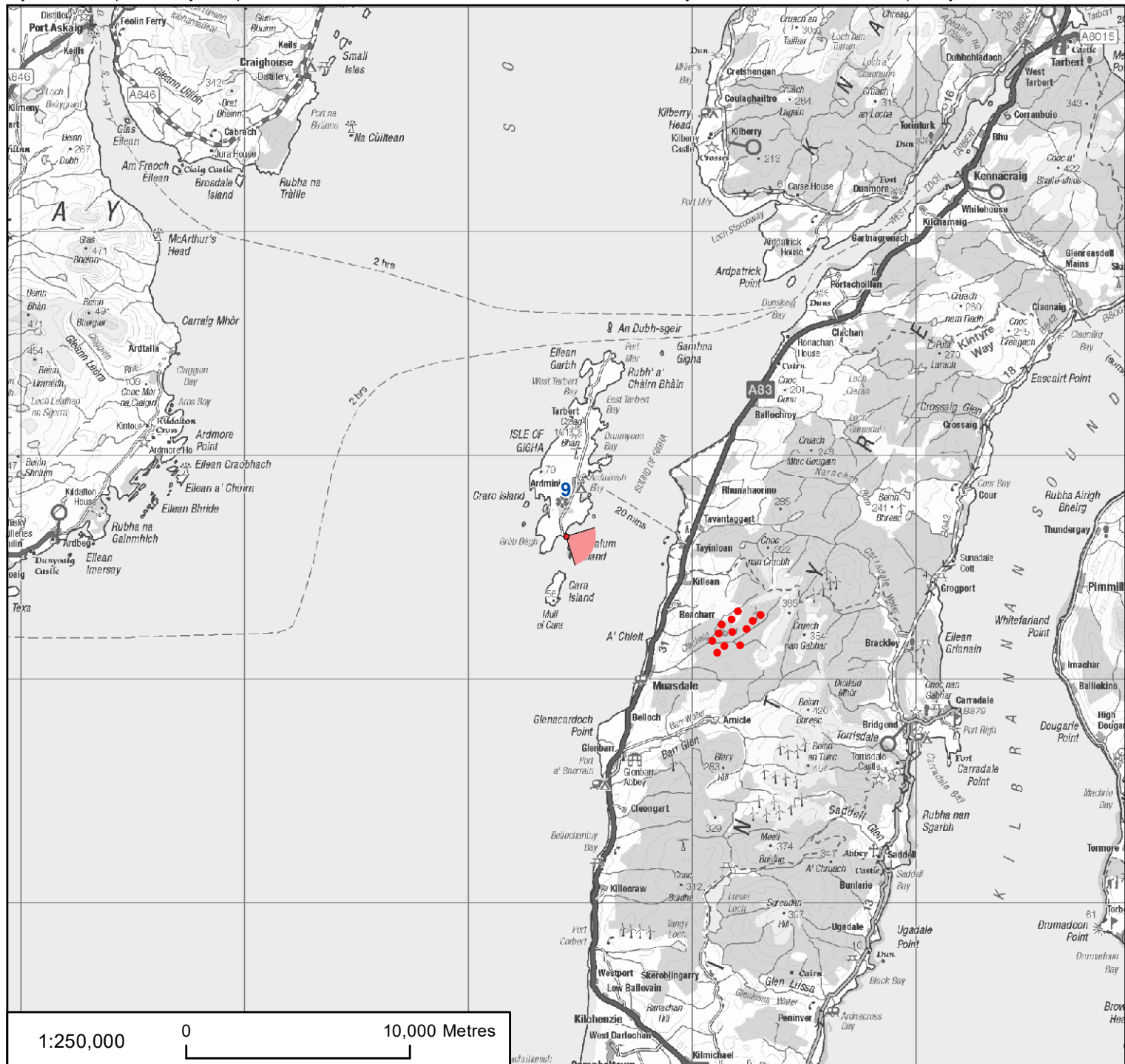
# Clachaig Glen Wind Farm

**Environmental Impact Assessment Report**

**Volume 2d**

**EIAR Visualisations**

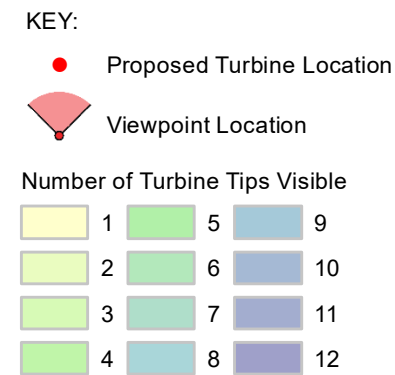
**Figure: VP9.1**



Tripod Photograph

Viewpoint 9:  
From the end of the northern spur of the hammerhead at Gigha South Pier.

Description of Viewpoint Location



Client:	<b>RWE</b>
Project:	CLACHAIG GLEN WIND FARM ENVIRONMENTAL IMPACT ASSESSMENT

Title:	FIGURE VP9.1 VIEWPOINT 9 - SOUTH PIER, GIGHA
--------	---

<b>AECOM</b>	
One Trinity Gardens Quayside Newcastle, NE1 2HF	Tel +44 (0) 191 224 6500 Fax +44 (0) 191 224 6599 www.aecom.com

Drawn:	LC	Checked:	LC
Verified:	AR	Approved:	SW
Date:	JANUARY 2022	Scale at A3:	1:250,000 / 1:50,000
Drawing Number:	CG_220105_EIAVP9.1_v1		A3





# Clachaig Glen Wind Farm

Environmental Impact Assessment Report

Volume 2d

EIAR Visualisations

**Figure: VP9.2**

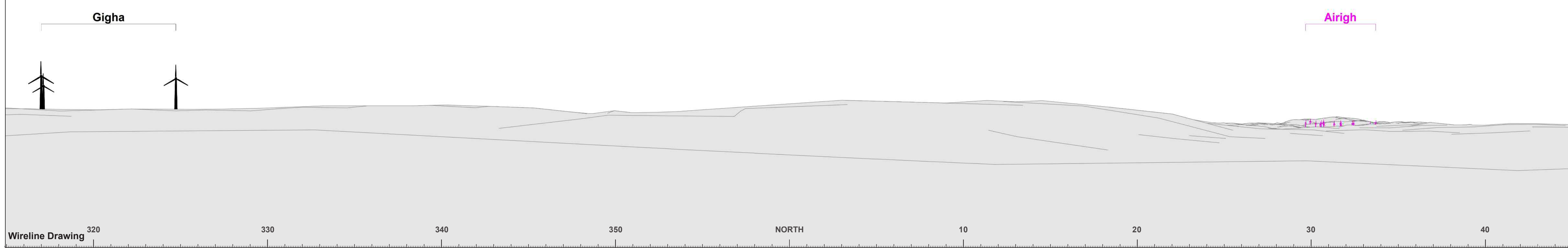






Baseline Photograph

This image provides landscape and visual context only



Wireline Drawing

Figure VP9.2(Panel 1 of 4) - Cumulative Wireline Viewpoint 9: South Pier, Gigha

OS reference:	164371 E 646362 N	Horizontal field of view:	90° (cylindrical projection)	Camera:	Canon EOS 5D Mk 2
Eye Level:	4.5m AOD	Principal distance:	522 mm	Lens:	Canon 50mm (f1.4)
Direction of view:	119°	Paper size:	841 x 297 mm (half A1)	Camera height:	1.5 m AGL
Nearest turbine:	7.98 km	Correct printed image size:	820 x 130mm	Date and time:	03/06/21 14:45



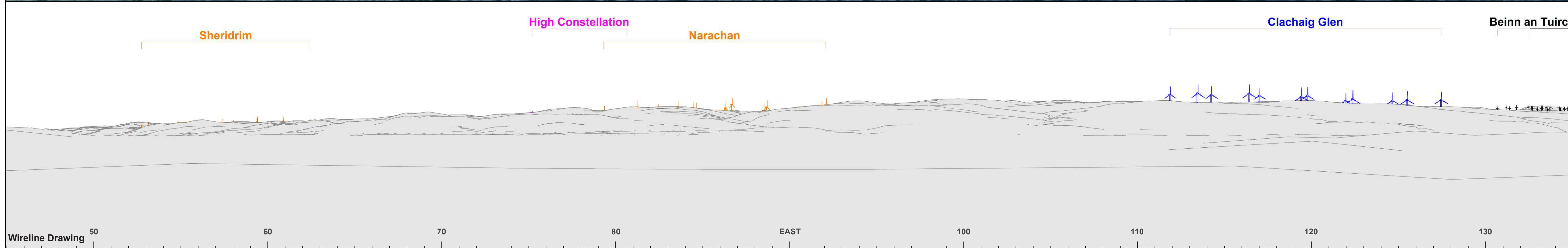


Figure VP9.2(Panel 2 of 4) - Cumulative Wireline  
Viewpoint 9: South Pier, Gigha

OS reference:	164371 E 646362 N	Horizontal field of view:	90° (cylindrical projection)	Camera:	Canon EOS 5D Mk 2
Eye Level:	4.5m AOD	Principal distance:	522 mm	Lens:	Canon 50mm (f1.4)
Direction of view:	119°	Paper size:	841 x 297 mm (half A1)	Camera height:	1.5 m AGL
Nearest turbine:	7.98 km	Correct printed image size:	820 x 130mm	Date and time:	03/06/21 14:45





Baseline Photograph

This image provides landscape and visual context only

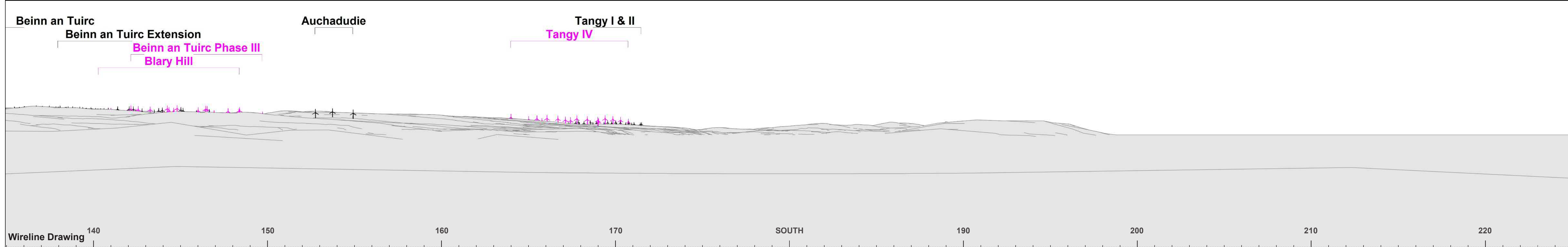


Figure VP9.2(Panel 3 of 4) - Cumulative Wireline  
Viewpoint 9: South Pier, Gigha

OS reference:	164371 E 646362 N	Horizontal field of view:	90° (cylindrical projection)	Camera:	Canon EOS 5D Mk 2
Eye Level:	4.5m AOD	Principal distance:	522 mm	Lens:	Canon 50mm (f1.4)
Direction of view:	119°	Paper size:	841 x 297 mm (half A1)	Camera height:	1.5 m AGL
Nearest turbine:	7.98 km	Correct printed image size:	820 x 130mm	Date and time:	03/06/21 14:45



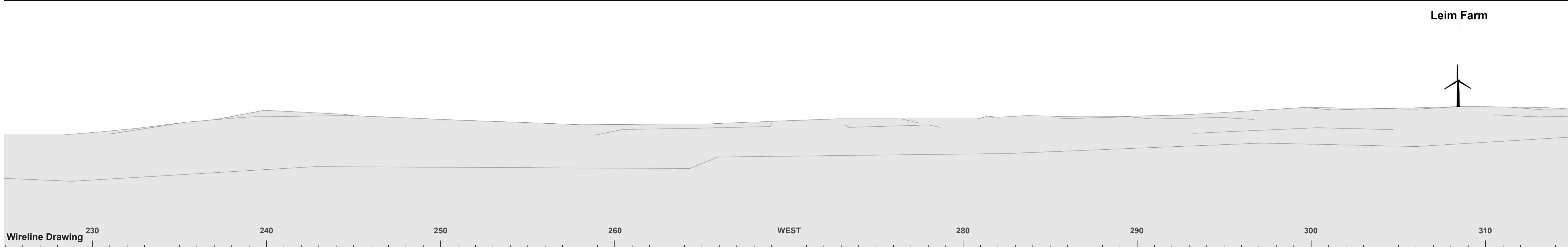


Figure VP9.2(Panel 4 of 4) - Cumulative Wireline  
Viewpoint 9: South Pier, Gigha

OS reference:	164371 E 646362 N	Horizontal field of view:	90° (cylindrical projection)	Camera:	Canon EOS 5D Mk 2
Eye Level:	4.5m AOD	Principal distance:	522 mm	Lens:	Canon 50mm (f1.4)
Direction of view:	119°	Paper size:	841 x 297 mm (half A1)	Camera height:	1.5 m AGL
Nearest turbine:	7.98 km	Correct printed image size:	820 x 130mm	Date and time:	03/06/21 14:45





# Clachaig Glen Wind Farm

Environmental Impact Assessment Report

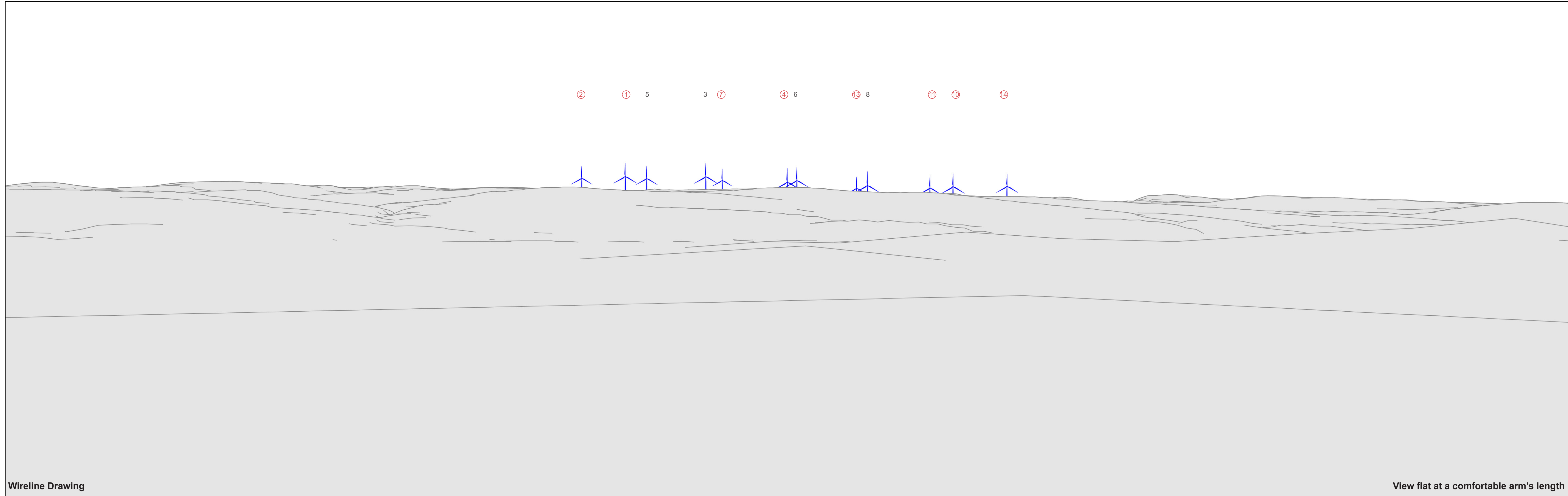
Volume 2d

EIAR Visualisations

**Figures: VP9.3; VP9.4**







**Figure VP9.3 - Wireline Drawing**  
**Viewpoint 9: South Pier, Gigha**

- 3 Turbine with no aviation light
- ④ Turbine with aviation light screened by topography
- ⑦ Turbine with aviation light theoretically visible

OS reference:	164371 E 646362 N	Horizontal field of view:	53.5° (planar projection)	Camera:	Canon EOS 5D Mk 2
Eye Level:	4.5m AOD	Principal distance:	812.5 mm	Lens:	Canon 50mm (f1.4)
Direction of view:	119°	Paper size:	841 x 297 mm (half A1)	Camera height:	1.5 m AGL
Nearest turbine:	7.98 km	Correct printed image size:	820 x 260mm	Date and time:	03/06/21 14:45





Photomontage

View flat at a comfortable arm's length

Figure VP9.4 - Photomontage  
Viewpoint 9: South Pier, Gigha

OS reference:	164371 E 646362 N	Horizontal field of view:	53.5° (planar projection)	Camera:	Canon EOS 5D Mk 2
Eye Level:	4.5m AOD	Principal distance:	812.5 mm	Lens:	Canon 50mm (f1.4)
Direction of view:	119°	Paper size:	841 x 297 mm (half A1)	Camera height:	1.5 m AGL
Nearest turbine:	7.98 km	Correct printed image size:	820 x 260mm	Date and time:	03/06/21 14:45



**RWE**

# Clachaig Glen Wind Farm

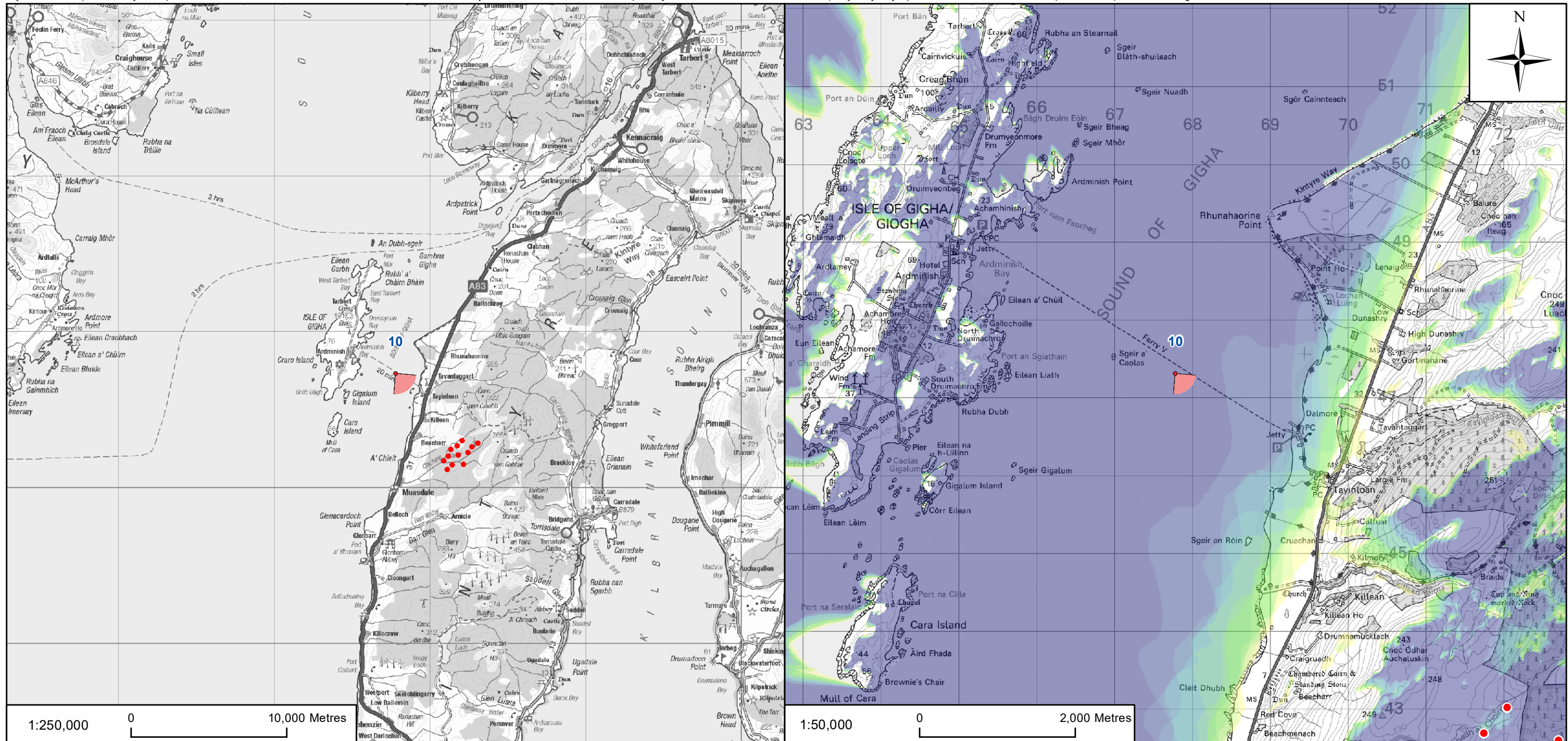
**Environmental Impact Assessment Report**

**Volume 2d**

**EIAR Visualisations**

**Figure: VP10.1**





Due to the motion of the ferry during the sailing it was not feasible to use a fixed tripod location. From this location the camera was held manually at eye height in the most stable position possible.

Viewpoint 10:  
From the Sound of Gigha, aboard the Gigha Ferry. The photo is taken from an open area on the upper deck of the vessel, starboard side.

**KEY:**

- Proposed Turbine Location
- ◂ Viewpoint Location

**Number of Turbine Tips Visible**

1	2	3	4	5
6	7	8	9	10
11	12			

Tripod Photograph

Description of Viewpoint Location

Client:	<b>RWE</b>
Project:	CLACHAIG GLEN WIND FARM ENVIRONMENTAL IMPACT ASSESSMENT

Title:	FIGURE VP10.1 VIEWPOINT 10 - SOUND OF GIGHA FROM GIGHA FERRY
--------	---

<b>AECOM</b>	
One Trinity Gardens Quayside Newcastle, NE1 2HF	Tel +44 (0) 191 224 6500 Fax +44 (0) 191 224 6599 www.aecom.com

Drawn:	LC	Checked:	LC
Verified:	AR	Approved:	SW
Date:	JANUARY 2022	Scale at A3:	1:250,000 / 1:50,000
Drawing Number:	CG_220105_EIAVP10.1_v1		A3





# Clachaig Glen Wind Farm

Environmental Impact Assessment Report

Volume 2d

EIAR Visualisations

**Figures: VP10.2; VP10.3;  
VP10.4**

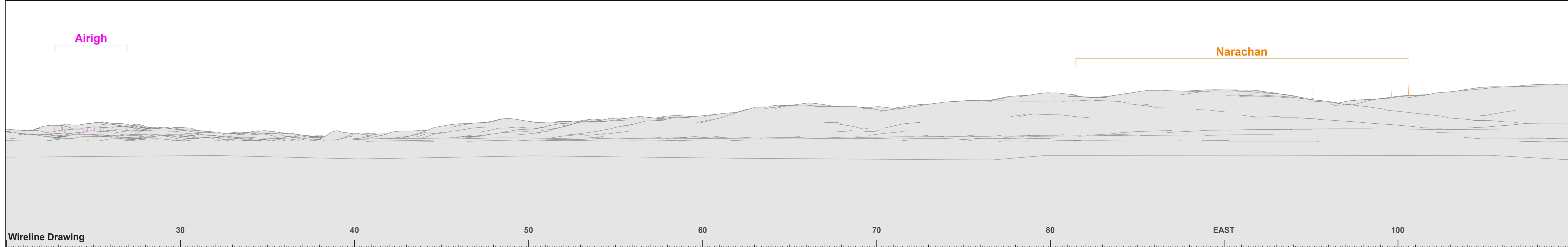






Baseline Photograph

This image provides landscape and visual context only



Wireline Drawing

Figure VP10.2(Panel 1 of 2) - Cumulative Wireline Viewpoint 10: Sound of Gigha from Gigha Ferry

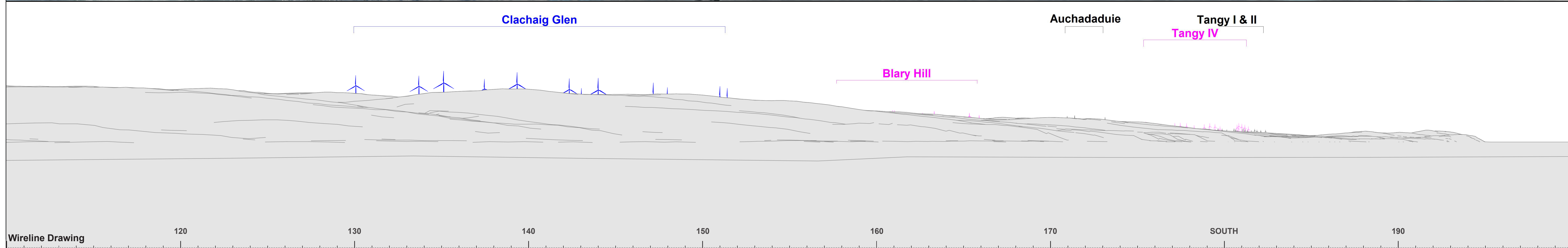
OS reference:	167781 E 647310 N	Horizontal field of view:	90° (cylindrical projection)	Camera:	Canon EOS 5D Mk 2
Eye Level:	3.5m AOD	Principal distance:	522 mm	Lens:	Canon 50mm (f1.8)
Direction of view:	140.5°	Paper size:	841 x 297 mm (half A1)	Camera height:	1.5 m AGL
Nearest turbine:	6.02 km	Correct printed image size:	820 x 130mm	Date and time:	08/07/14 14:06





Baseline Photograph

This image provides landscape and visual context only

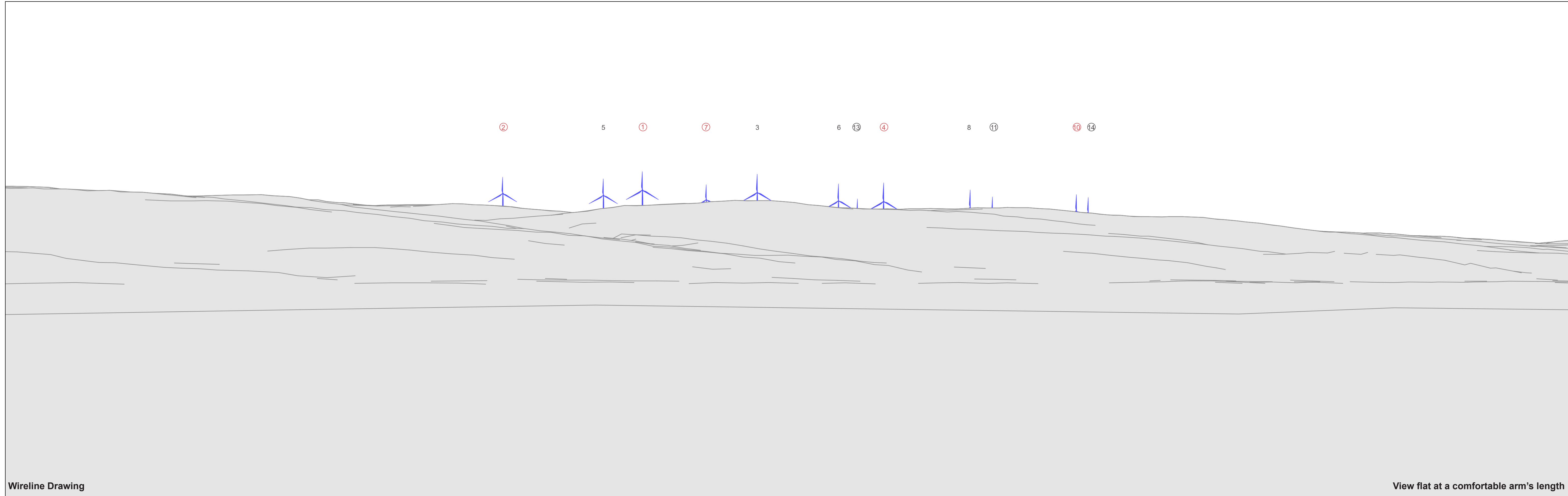


Wireline Drawing

Figure VP10.2(Panel 2 of 2) - Cumulative Wireline  
Viewpoint 10: Sound of Gigha from Gigha Ferry

OS reference:	167781 E 647310 N	Horizontal field of view:	90° (cylindrical projection)	Camera:	Canon EOS 5D Mk 2
Eye Level:	3.5m AOD	Principal distance:	522 mm	Lens:	Canon 50mm (f1.8)
Direction of view:	140.5°	Paper size:	841 x 297 mm (half A1)	Camera height:	1.5 m AGL
Nearest turbine:	6.02 km	Correct printed image size:	820 x 130mm	Date and time:	08/07/14 14:06





Wireline Drawing

View flat at a comfortable arm's length

**Figure VP10.3 - Wireline Drawing**  
**Viewpoint 10: Sound of Gigha from Gigha Ferry**

- 3 Turbine with no aviation light
- ④ Turbine with aviation light screened by topography
- ⑦ Turbine with aviation light theoretically visible

OS reference:	167781 E 647310 N	Horizontal field of view:	53.5° (planar projection)	Camera:	Canon EOS 5D Mk 2
Eye Level:	3.5m AOD	Principal distance:	812.5 mm	Lens:	Canon 50mm (f1.8)
Direction of view:	140.5°	Paper size:	841 x 297 mm (half A1)	Camera height:	1.5 m AGL
Nearest turbine:	6.02 km	Correct printed image size:	820 x 260mm	Date and time:	08/07/14 14:06





Photomontage

View flat at a comfortable arm's length

Figure VP10.4 - Photomontage  
Viewpoint 10: Sound of Gigha from Gigha Ferry

OS reference:	167781 E 647310 N	Horizontal field of view:	53.5° (planar projection)	Camera:	Canon EOS 5D Mk 2
Eye Level:	3.5m AOD	Principal distance:	812.5 mm	Lens:	Canon 50mm (f1.8)
Direction of view:	140.5°	Paper size:	841 x 297 mm (half A1)	Camera height:	1.5 m AGL
Nearest turbine:	6.02 km	Correct printed image size:	820 x 260mm	Date and time:	08/07/14 14:06



**RWE**

# Clachaig Glen Wind Farm

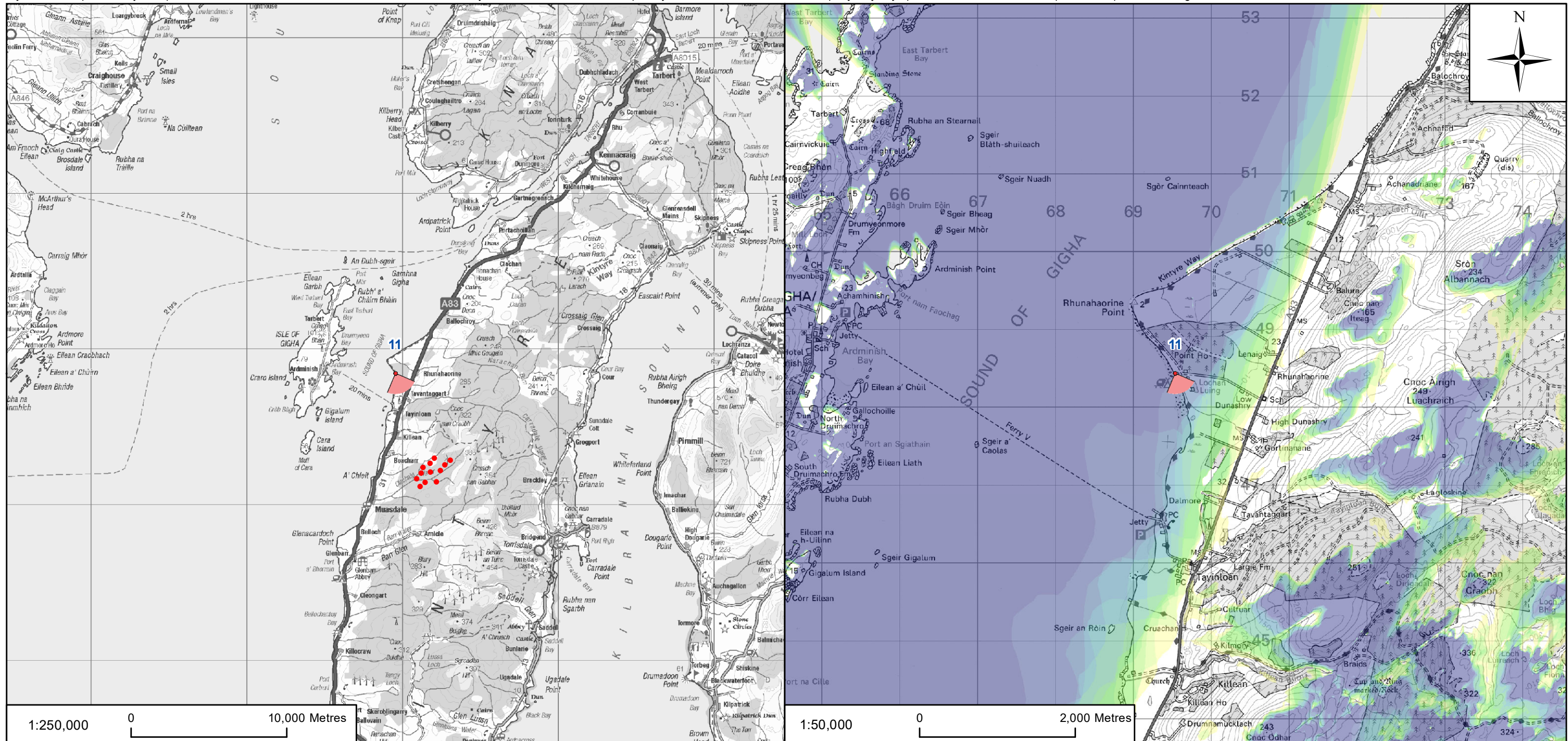
**Environmental Impact Assessment Report**

**Volume 2d**

**EIAR Visualisations**

**Figure: VP11.1**





Tripod Photograph

Viewpoint 11:  
From the publicly accessible beach to the south-west of Point Sands Caravan Park.

Description of Viewpoint Location

**KEY:**

- Proposed Turbine Location
- ▲ Viewpoint Location

**Number of Turbine Tips Visible**

1	5	9
2	6	10
3	7	11
4	8	12

Client: **RWE**

Project: CLACHAIG GLEN WIND FARM ENVIRONMENTAL IMPACT ASSESSMENT

Title: **FIGURE VP11.1 VIEWPOINT 11 - RHUNAHAORINE/ POINT SANDS NEAR THE CARAVAN PARK**

**AECOM**  
One Trinity Gardens  
Quayside  
Newcastle, NE1 2HF  
Tel +44 (0) 191 224 6500  
Fax +44 (0) 191 224 6599  
www.aecom.com

Drawn: LC	Checked: LC
Verified: AR	Approved: SW
Date: JANUARY 2022	Scale at A3: 1:250,000 / 1:50,000
Drawing Number: CG_220105_EI AVP11.1_v1	A3





# Clachaig Glen Wind Farm

Environmental Impact Assessment Report

Volume 2d

EIAR Visualisations

**Figures: VP11.2; VP11.3**

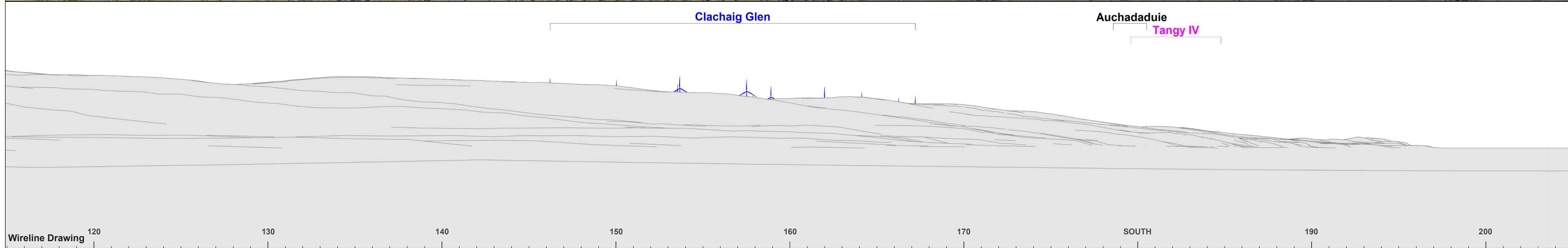






Baseline Photograph

This image provides landscape and visual context only

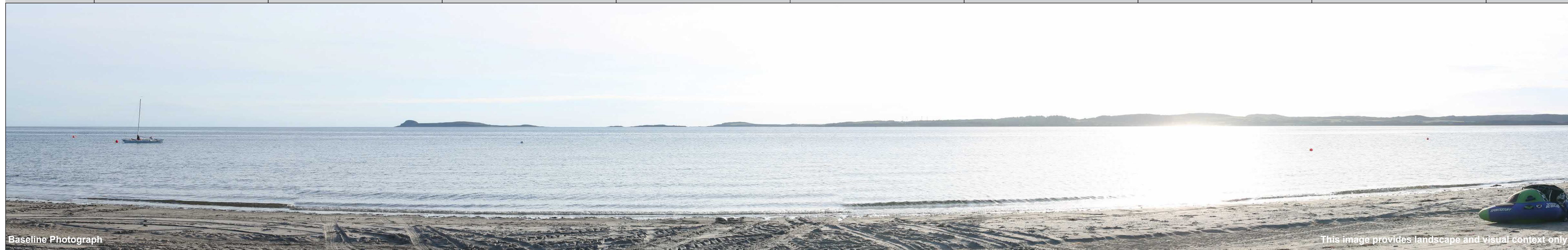


Wireline Drawing

Figure VP11.2(Panel 1 of 3) - Cumulative Wireline  
Viewpoint 11: Rhunahaorine/Point Sands near the Caravan Park

OS reference:	169539 E 648433 N	Horizontal field of view:	90° (cylindrical projection)	Camera:	Canon EOS 5D Mk 3
Eye Level:	2.5m AOD	Principal distance:	522 mm	Lens:	Sigma 50mm (f1.4)
Direction of view:	158°	Paper size:	841 x 297 mm (half A1)	Camera height:	1.5 m AGL
Nearest turbine:	5.96 km	Correct printed image size:	820 x 130mm	Date and time:	24/08/20 18:48

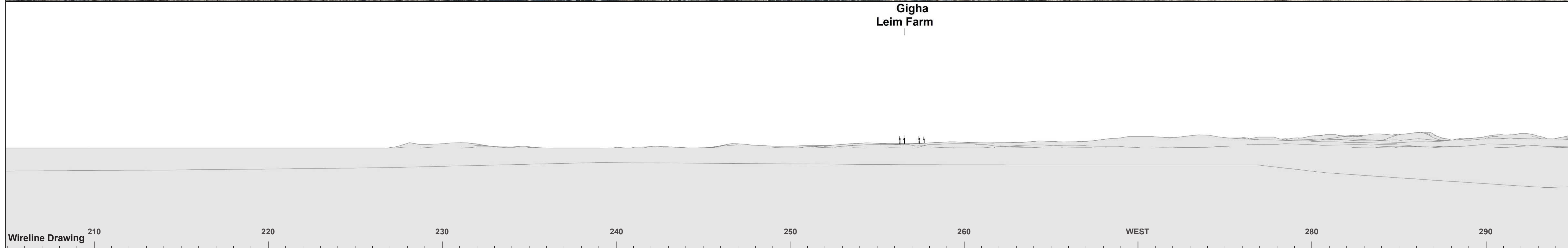




Baseline Photograph

This image provides landscape and visual context only

Gigha  
Leim Farm



Wireline Drawing

Figure VP11.2(Panel 2 of 3) - Cumulative Wireline  
Viewpoint 11: Rhunahaorine/Point Sands near the Caravan Park

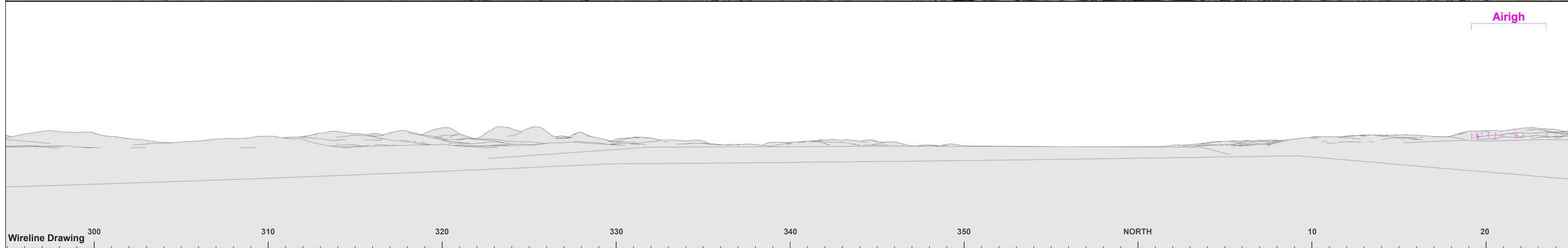
OS reference:	169539 E 648433 N	Horizontal field of view:	90° (cylindrical projection)	Camera:	Canon EOS 5D Mk 3
Eye Level:	2.5m AOD	Principal distance:	522 mm	Lens:	Sigma 50mm (f1.4)
Direction of view:	158°	Paper size:	841 x 297 mm (half A1)	Camera height:	1.5 m AGL
Nearest turbine:	5.96 km	Correct printed image size:	820 x 130mm	Date and time:	24/08/20 18:48





Baseline Photograph

This image provides landscape and visual context only



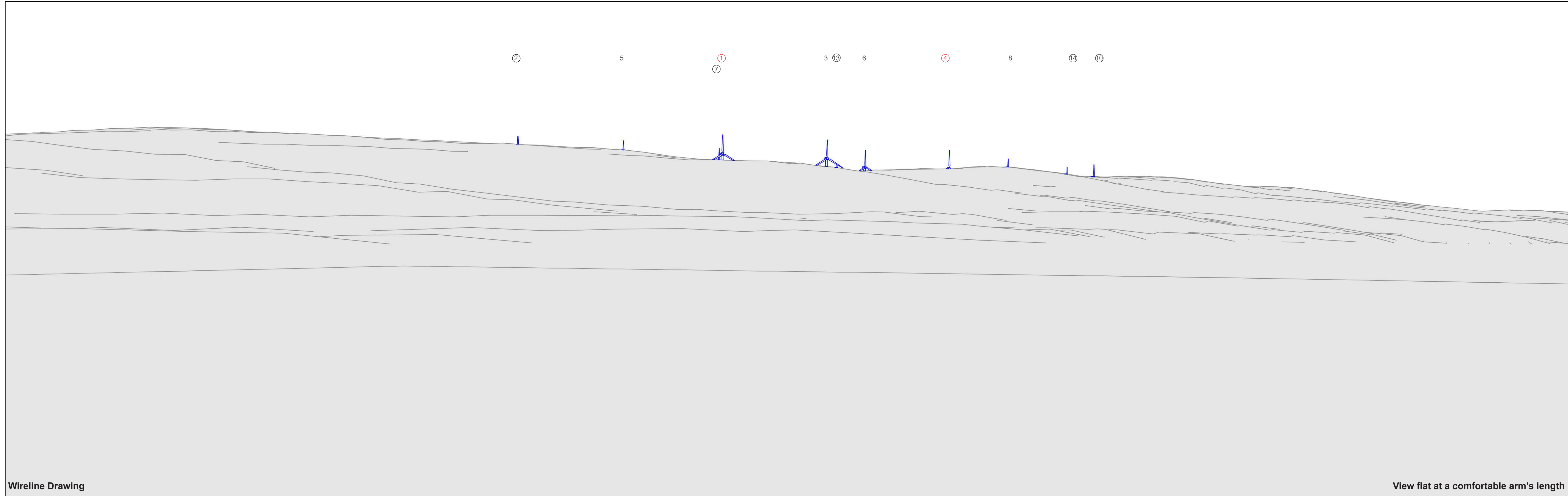
Wireline Drawing

Airigh

Figure VP11.2(Panel 3 of 3) - Cumulative Wireline  
Viewpoint 11: Rhunahaorine/Point Sands near the Caravan Park

OS reference:	169539 E 648433 N	Horizontal field of view:	90° (cylindrical projection)	Camera:	Canon EOS 5D Mk 3
Eye Level:	2.5m AOD	Principal distance:	522 mm	Lens:	Sigma 50mm (f1.4)
Direction of view:	158°	Paper size:	841 x 297 mm (half A1)	Camera height:	1.5 m AGL
Nearest turbine:	5.96 km	Correct printed image size:	820 x 130mm	Date and time:	24/08/20 18:48





Wireline Drawing

View flat at a comfortable arm's length

**Figure VP11.3 - Wireline Drawing**  
**Viewpoint 11: Rhunahaorine/Point Sands near the Caravan Park**

- 3 Turbine with no aviation light
- ④ Turbine with aviation light screened by topography
- ⑦ Turbine with aviation light theoretically visible

OS reference:	169539 E 648433 N	Horizontal field of view:	53.5° (planar projection)	Camera:	Canon EOS 5D Mk 3
Eye Level:	2.5m AOD	Principal distance:	812.5 mm	Lens:	Sigma 50mm (f1.4)
Direction of view:	158°	Paper size:	841 x 297 mm (half A1)	Camera height:	1.5 m AGL
Nearest turbine:	5.96 km	Correct printed image size:	820 x 260mm	Date and time:	24/08/20 18:48





# Clachaig Glen Wind Farm

Environmental Impact Assessment Report

Volume 2d

Visualisations

**Figure: VP11.4**







Photomontage

View flat at a comfortable arm's length

**Figure VP11.4 - Photomontage**  
**Viewpoint 11: Rhunahaorine/Point Sands near the Caravan Park**

OS reference:	169539 E 648433 N	Horizontal field of view:	53.5° (planar projection)	Camera:	Canon EOS 5D Mk 3
Eye Level:	2.5m AOD	Principal distance:	812.5 mm	Lens:	Sigma 50mm (f1.4)
Direction of view:	158°	Paper size:	841 x 297 mm (half A1)	Camera height:	1.5 m AGL
Nearest turbine:	5.96 km	Correct printed image size:	820 x 260mm	Date and time:	24/08/20 18:48





# Clachaig Glen Wind Farm

Environmental Impact Assessment Report

Volume 2d

Visualisations

**Figure: VP11.5**







**Photomontage**

The night-time photography is taken from the same location as the daytime photography to allow direct comparison. The tripod is retained in the same position to capture both images and as such could not be repositioned to avoid capturing the fire in the foreground, which was not connected to the photography visit.

**View flat at a comfortable arm's length**

**Figure VP11.5 - Night-Time Photomontage (2000 Candela)  
Viewpoint 11: Rhunahaorine/Point Sands near the Caravan Park**

This visualisation provides a representation of the Proposed Development and associated aviation lighting at dusk. It is important to note that this image gives an impression of the lighting as captured by a photograph, rather than how they would be perceived by the naked eye and therefore tends to overstate the intensity.

The aviation lighting is depicted operating at peak intensity (2000 candela at source). In reality the lighting is likely to operate at a lower intensity (10% of peak intensity) for upwards of 96% of the time (see Appendix 16.1, EIAR Volume 3 for analysis of historic data). Figure VP11.6 provides a representation of the aviation lighting in the reduced intensity mode.

The apparent intensity of the lighting is also influenced by the vertical angle of view relative to the light source. From this location the vertical angle would result in the apparent intensity being reduced by approximately 90%, as is indicated in the above image. See Appendix 16.1 (EIAR Volume 3) for the calculated intensity of each aviation light from this location.

OS reference:	169539 E 648433 N	Horizontal field of view	53.5° (planar projection)	Camera:	Canon EOS 5D Mk 3
Eye Level:	2.5m AOD	Principal distance:	812.5 mm	Lens:	Sigma 50mm (f1.4)
Direction of view:	158°	Paper size:	841 x 297 mm (half A1)	Camera height	1.5 m AGL
Nearest turbine:	5.96 km	Correct printed image size:	820 x 260mm	Date and time:	24/08/20 20:57





# Clachaig Glen Wind Farm

Environmental Impact Assessment Report

Volume 2d

Visualisations

**Figure: VP11.6**







**Photomontage**

The night-time photography is taken from the same location as the daytime photography to allow direct comparison. The tripod is retained in the same position to capture both images and as such could not be repositioned to avoid capturing the fire in the foreground, which was not connected to the photography visit.

**View flat at a comfortable arm's length**

**Figure VP11.6 - Night-Time Photomontage (200 Candela)  
Viewpoint 11: Rhunahaorine/Point Sands near the Caravan Park**

This visualisation provides a representation of the Proposed Development and associated aviation lighting at dusk. It is important to note that this image gives an impression of the lighting as captured by a photograph, rather than how they would be perceived by the naked eye and therefore tends to overstate the intensity.

The aviation lighting is depicted operating in the lower intensity mode (200 candela at source). Based on analysis of historic weather data it is anticipated that the lighting would operate in low intensity mode for upwards of 96% of the time (see Appendix 16.1, EIA Volume 3 for details). Figure VP11.5 provides a representation of the aviation lighting in the peak intensity mode.

The apparent intensity of the lighting is also influenced by the vertical angle of view relative to the light source. From this location the vertical angle would result in the apparent intensity being reduced by approximately 90%, as is indicated in the above image. See Appendix 16.1 (EIA Volume 3) for the calculated intensity of each aviation light from this location.

OS reference:	169539 E 648433 N	Horizontal field of view:	53.5° (planar projection)	Camera:	Canon EOS 5D Mk 3
Eye Level:	2.5m AOD	Principal distance:	812.5 mm	Lens:	Sigma 50mm (f1.4)
Direction of view:	158°	Paper size:	841 x 297 mm (half A1)	Camera height:	1.5 m AGL
Nearest turbine:	5.96 km	Correct printed image size:	820 x 260mm	Date and time:	24/08/20 20:57



**RWE**

# Clachaig Glen Wind Farm

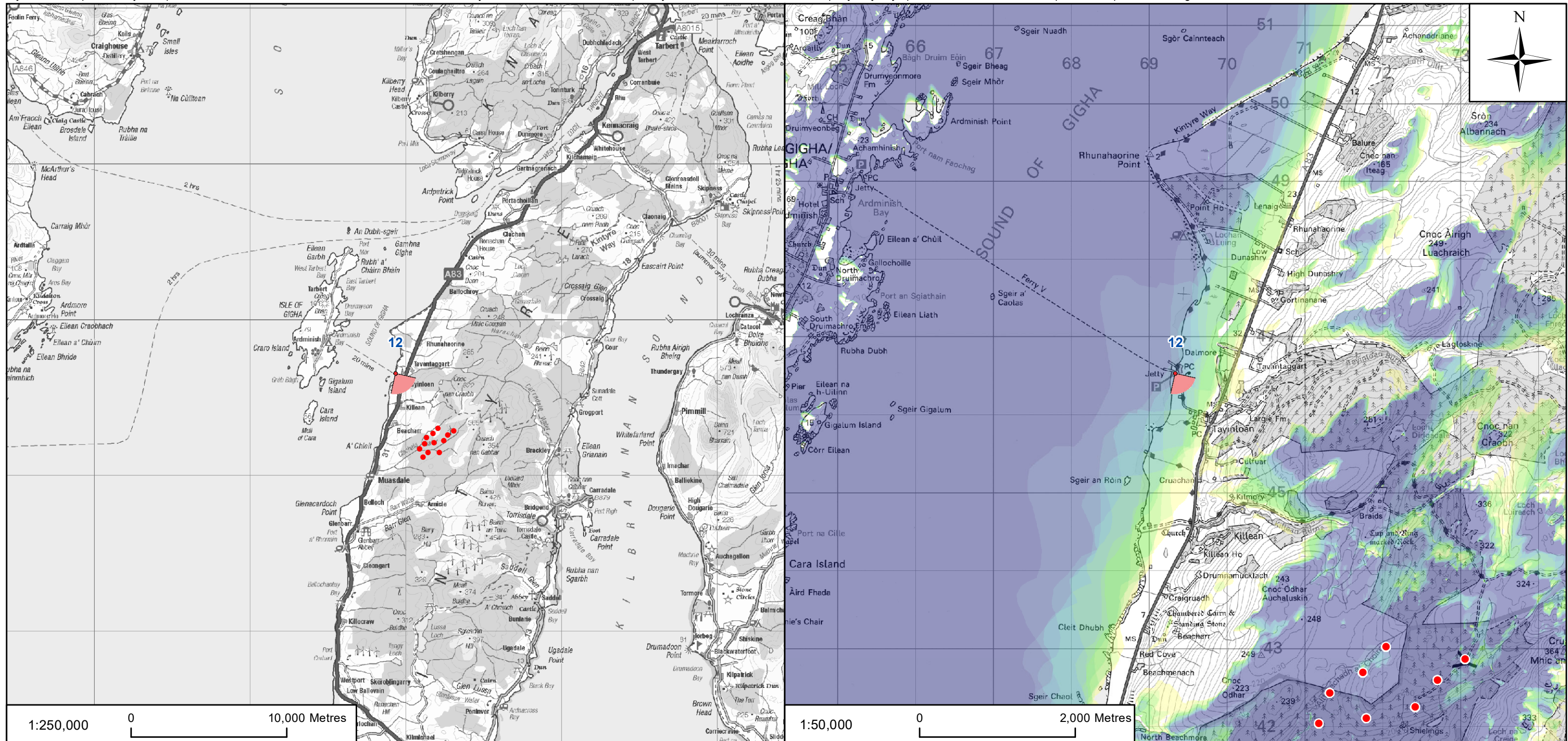
**Environmental Impact Assessment Report**

**Volume 2d**

**EIAR Visualisations**

**Figure: VP12.1**





Tripod Photograph

Viewpoint 12:  
From the ferry terminal car park at Tayinloan, next to the bus shelter.

Description of Viewpoint Location

**KEY:**

- Proposed Turbine Location
- ▲ Viewpoint Location

**Number of Turbine Tips Visible**

1	5	9
2	6	10
3	7	11
4	8	12

Client: **RWE**

Project: **CLACHAIG GLEN WIND FARM ENVIRONMENTAL IMPACT ASSESSMENT**

Title: **FIGURE VP12.1 VIEWPOINT 12 - TAYINLOAN FERRY TERMINAL**

**AECOM**  
One Trinity Gardens  
Quayside  
Newcastle, NE1 2HF  
Tel +44 (0) 191 224 6500  
Fax +44 (0) 191 224 6599  
www.aecom.com

Drawn: LC	Checked: LC
Verified: AR	Approved: SW
Date: JANUARY 2022	Scale at A3: 1:250,000 / 1:50,000
Drawing Number: CG_220105_EIAVP12.1_v1	A3





# Clachaig Glen Wind Farm

Environmental Impact Assessment Report

Volume 2d

EIAR Visualisations

**Figure: VP12.2**

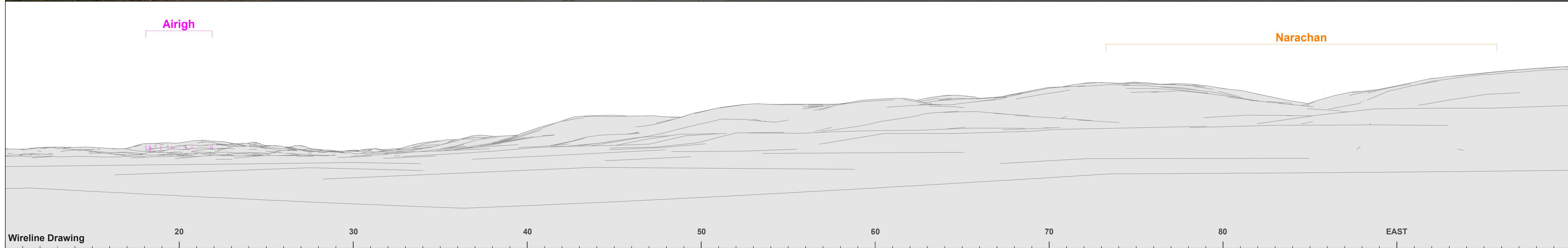






Baseline Photograph

This image provides landscape and visual context only



Wireline Drawing

Figure VP12.2(Panel 1 of 2) - Cumulative Wireline Viewpoint 12: Tayinloan Ferry Terminal

OS reference:	169336 E 646531 N	Horizontal field of view:	90° (cylindrical projection)	Camera:	Canon EOS 5D Mk 2
Eye Level:	3.88m AOD	Principal distance:	522 mm	Lens:	Canon 50mm (f1.8)
Direction of view:	151°	Paper size:	841 x 297 mm (half A1)	Camera height:	1.5 m AGL
Nearest turbine:	4.43 km	Correct printed image size:	820 x 130mm	Date and time:	08/07/14 17:04



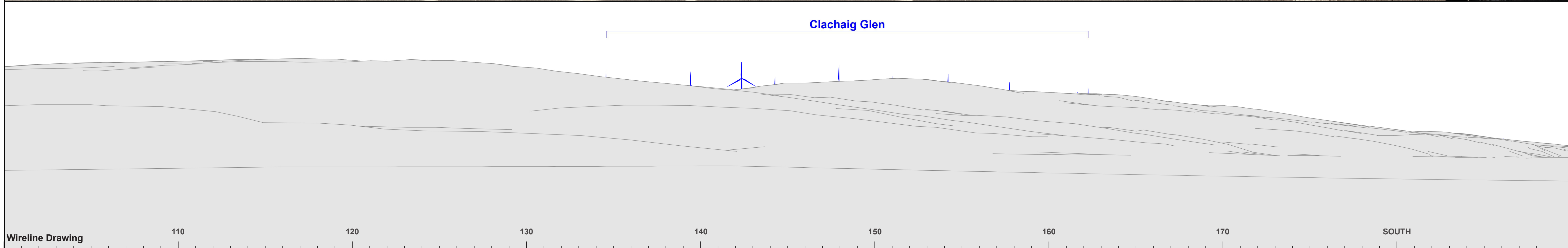


Figure VP12.2(Panel 2 of 2) - Cumulative Wireline  
Viewpoint 12: Tayinloan Ferry Terminal

OS reference:	169336 E 646531 N	Horizontal field of view:	90° (cylindrical projection)	Camera:	Canon EOS 5D Mk 2
Eye Level:	3.88m AOD	Principal distance:	522 mm	Lens:	Canon 50mm (f1.8)
Direction of view:	151°	Paper size:	841 x 297 mm (half A1)	Camera height:	1.5 m AGL
Nearest turbine:	4.43 km	Correct printed image size:	820 x 130mm	Date and time:	08/07/14 17:04





# Clachaig Glen Wind Farm

Environmental Impact Assessment Report

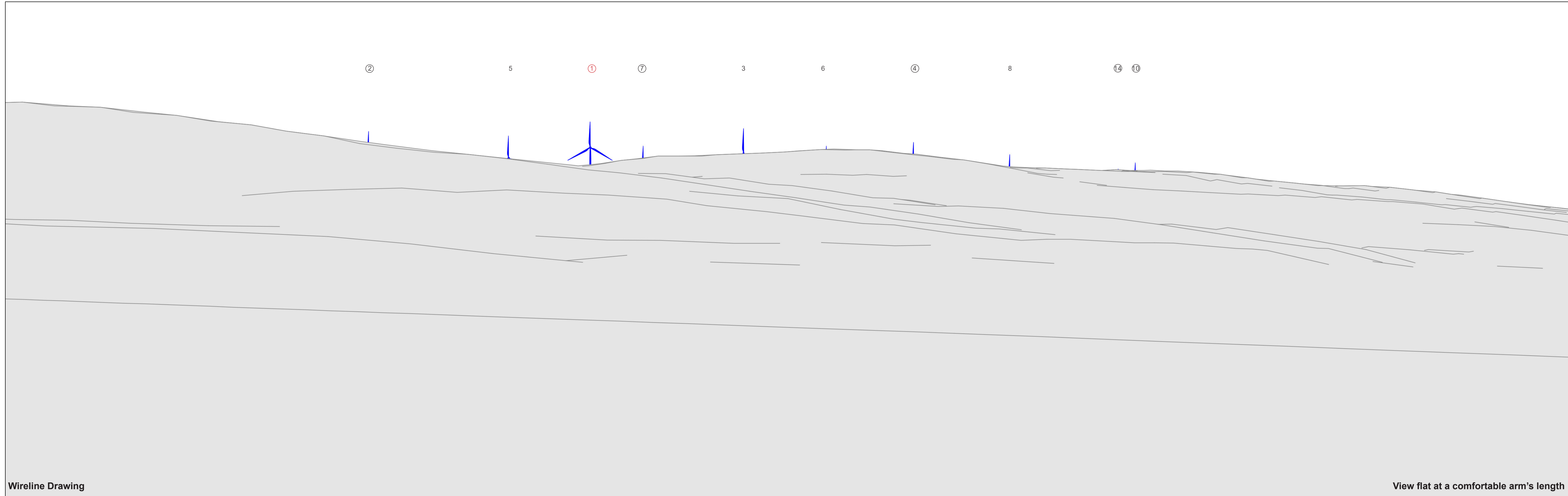
Volume 2d

EIAR Visualisations

**Figures: VP12.3; VP12.4**







Wireline Drawing

View flat at a comfortable arm's length

**Figure VP12.3 - Wireline Drawing**  
**Viewpoint 12: Tayinloan Ferry Terminal**

- 3 Turbine with no aviation light
- ④ Turbine with aviation light screened by topography
- ⑦ Turbine with aviation light theoretically visible

OS reference:	169336 E 646531 N	Horizontal field of view:	53.5° (planar projection)	Camera:	Canon EOS 5D Mk 2
Eye Level:	3.88m AOD	Principal distance:	812.5 mm	Lens:	Canon 50mm (f1.8)
Direction of view:	151°	Paper size:	841 x 297 mm (half A1)	Camera height:	1.5 m AGL
Nearest turbine:	4.43 km	Correct printed image size:	820 x 260mm	Date and time:	08/07/14 17:04





Photomontage

View flat at a comfortable arm's length

**Figure VP12.4 - Photomontage**  
**Viewpoint 12: Tayinloan Ferry Terminal**

OS reference:	169336 E 646531 N	Horizontal field of view:	53.5° (planar projection)	Camera:	Canon EOS 5D Mk 2
Eye Level:	3.88m AOD	Principal distance:	812.5 mm	Lens:	Canon 50mm (f1.8)
Direction of view:	151°	Paper size:	841 x 297 mm (half A1)	Camera height:	1.5 m AGL
Nearest turbine:	4.43 km	Correct printed image size:	820 x 260mm	Date and time:	08/07/14 17:04



