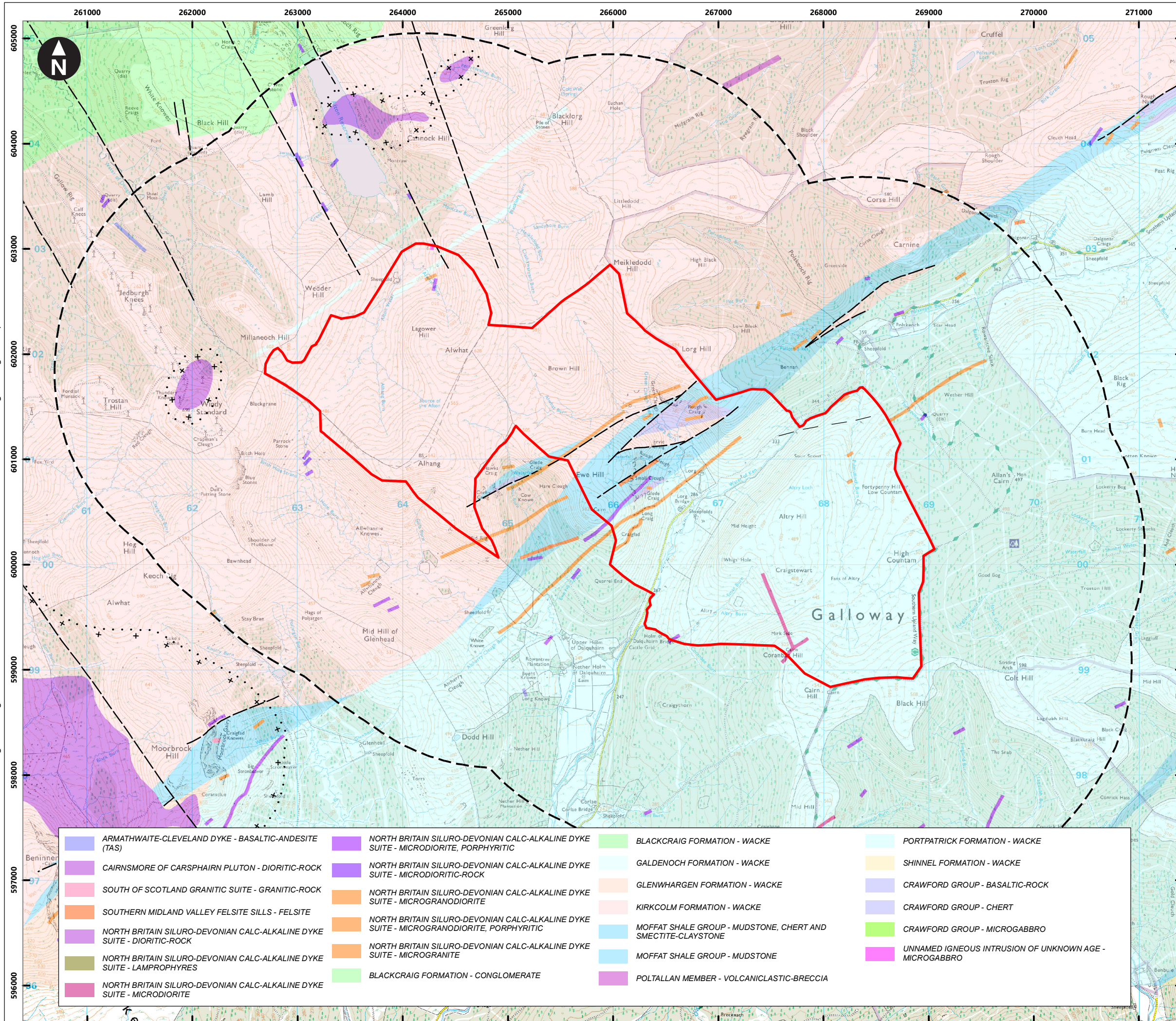
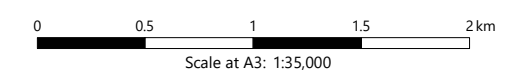


W:\GWM\DATA\PROJECT\32964 Afon II Sub Folder\D040 Design\Drawings\ArcGIS\MXD\32964-WOOD-XX-XX-FG-OW-0004_S0_P01.2.mxd Originator: gwenda.pannu



- Key**
- Site boundary
 - 2km study area
 - Fault, inferred, displacement unknown
 - Axial plane trace of major syncline
 - Margin of contact metamorphic aureole, symbol towards intrusion



Based upon the Ordnance Survey Map with the permission of the Controller of Her Majesty's Stationery Office.
© Crown Copyright. 100027856



Lorg Wind Farm
Environmental Impact Assessment Report

Figure 13.3
Solid geology

November 2022

32964-WOOD-XX-XX-FG-OW-0004_S0_P01.2

 ARMATHWAITE-CLEVELAND DYKE - BASALTIC-ANDESITE (TAS)	 NORTH BRITAIN SILURO-DEVONIAN CALC-ALKALINE DYKE SUITE - MICRODIORITE, PORPHYRITIC	 BLACKCRAIG FORMATION - WACKE	 PORTPATRICK FORMATION - WACKE
 CAIRNSMORE OF CARSPHAIRN PLUTON - DIORITIC-ROCK	 NORTH BRITAIN SILURO-DEVONIAN CALC-ALKALINE DYKE SUITE - MICRODIORITIC-ROCK	 GALDENOCH FORMATION - WACKE	 SHINNEL FORMATION - WACKE
 SOUTH OF SCOTLAND GRANITIC SUITE - GRANITIC-ROCK	 NORTH BRITAIN SILURO-DEVONIAN CALC-ALKALINE DYKE SUITE - MICROGRANODIORITE	 GLENWHARGEN FORMATION - WACKE	 CRAWFORD GROUP - BASALTIC-ROCK
 SOUTHERN MIDLAND VALLEY FELSITE SILLS - FELSITE	 NORTH BRITAIN SILURO-DEVONIAN CALC-ALKALINE DYKE SUITE - MICROGRANODIORITE, PORPHYRITIC	 KIRKCOLM FORMATION - WACKE	 CRAWFORD GROUP - CHERT
 NORTH BRITAIN SILURO-DEVONIAN CALC-ALKALINE DYKE SUITE - DIORITIC-ROCK	 NORTH BRITAIN SILURO-DEVONIAN CALC-ALKALINE DYKE SUITE - MICROGRANITE	 MOFFAT SHALE GROUP - MUDSTONE, CHERT AND SMECTITE-CLAYSTONE	 CRAWFORD GROUP - MICROGABBRO
 NORTH BRITAIN SILURO-DEVONIAN CALC-ALKALINE DYKE SUITE - LAMPROPHYRES	 BLACKCRAIG FORMATION - CONGLOMERATE	 MOFFAT SHALE GROUP - MUDSTONE	 UNNAMED IGNEOUS INTRUSION OF UNKNOWN AGE - MICROGABBRO
 NORTH BRITAIN SILURO-DEVONIAN CALC-ALKALINE DYKE SUITE - MICRODIORITE	 POLTALLAN MEMBER - VOLCANICLASTIC-BRECCIA		

