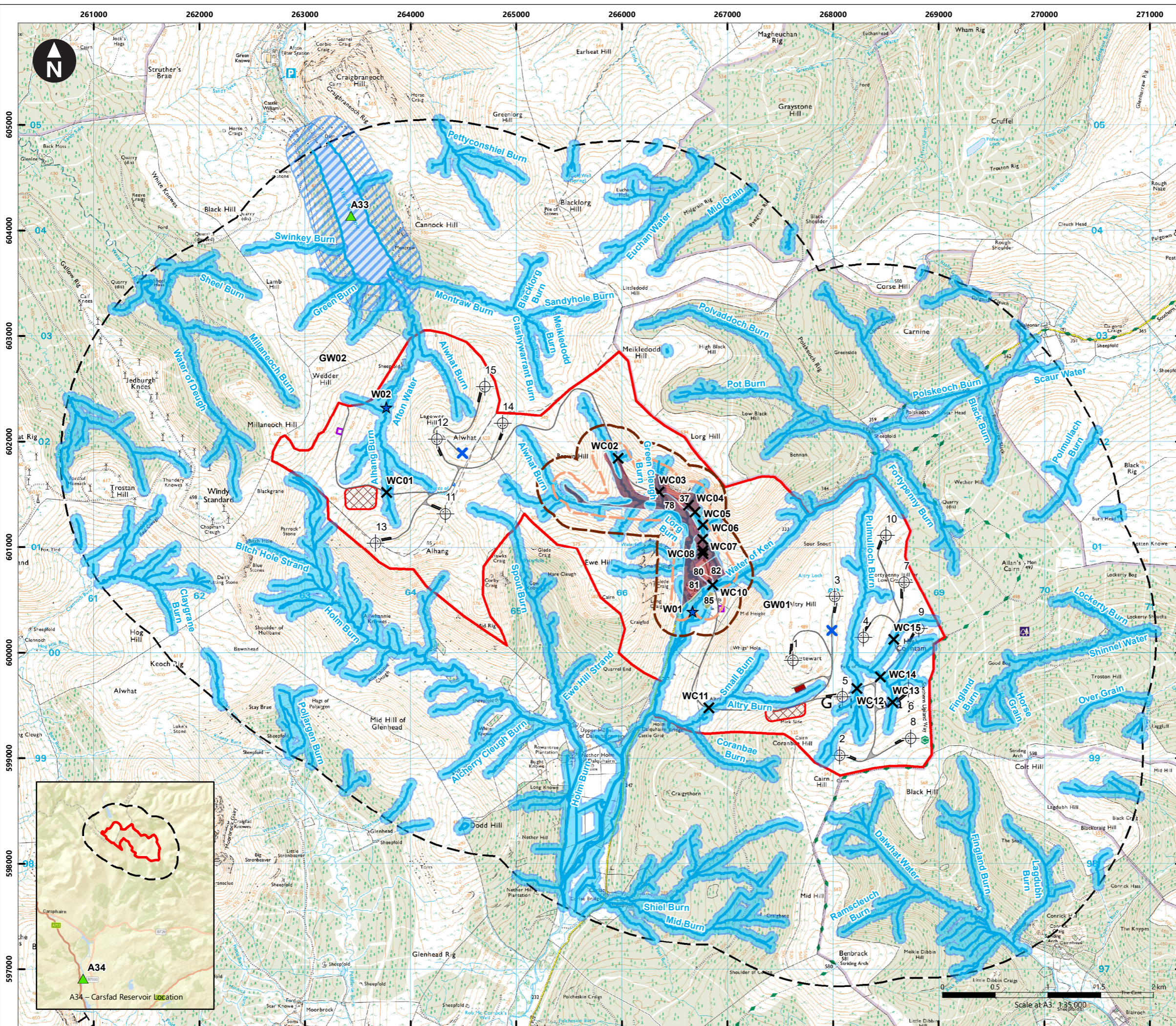


W:\GWM\DATA\PROJECT\32964 Afon II Sub Folder\D040 Design\Drawings\ArcGIS\MXD\32964-WOOD-XX-XX-FG-OW-0012\_S0\_P01.2.mxd Originator: gwenda.pannu



**Key**

- Site boundary
- 2km study area
- Turbine location
- Met mast location
- Crane pads
- Access tracks
- Borrow pit search area
- Substation A (East)
- Substation B (West)
- Temporary compound
- Watercourse
- Watercourse 50m buffer
- Abstraction 250m buffer

**Hydrogeological Receptors**

- CAR Licensed Activity
- WFD surface water bodies
- Watercourse Crossing
- Aquifers and associated WFD groundwater bodies

**GWDE**

- High
- Moderate
- LUPS-GU31 100m buffer for excavation <1m deep
- LUPS-GU31 100m buffer for excavation <1m deep

Based upon the Ordnance Survey Map with the permission of the Controller of Her Majesty's Stationery Office.  
© Crown Copyright. 100027856

Client  
**RWE**

Lorg Wind Farm  
Environmental Impact Assessment Report

**Figure 13.6**  
Hydrological & hydrogeological constraints