



***RWE Dea - a reliable partner  
in the world of gas and oil  
United Kingdom***

RWE Dea



## ***RWE Dea - a reliable partner in the world of gas and oil***

RWE Dea – in the world of gas and oil, the company’s name stands for performance and competence, commitment and responsibility. The company is headquartered in Hamburg, Germany, and is a top-performing exploration and production company for natural gas and crude oil, operating on an international scale. The company is part of the RWE Group - one of Europe’s biggest energy corporations.

### ***Success through international operations***

In an effort to expand its international upstream position, RWE Dea is concentrating on defined core regions in favourable locations near Europe’s consumer centres. Oil exploration and production will be replaced by gas activities, which will increasingly involve operations abroad. The international upstream activities currently focus on Norway, the United Kingdom



RWE Dea is headquartered in Hamburg, Germany.

and the Northern African states as well as Poland and Denmark. In both, the domestic and international activities, the company cooperates with competent partners in numerous projects.

Geological expertise, state-of-the-art drilling and production technologies and a diverse range of professional experience and know-how make RWE Dea a powerful company engaged in numerous operations at home and abroad. Safeguarding energy supplies and environmental protection are key objectives. The production of natural gas, which plays an ever increasing role in a growing market, is a top priority for RWE Dea.

### ***RWE Dea UK***

In the United Kingdom, one of the key regions of RWE Dea’s upstream business, RWE Dea UK Holdings Ltd has been the operating subsidiary of RWE Dea AG since 2002. The company’s assets are concentrated in the Southern North Sea gas basin. Its producing fields and reserves are located close to the key markets of Central Europe and the UK and are part of an advanced and sophisticated infrastructure. The short transport routes using pipeline connections to the United Kingdom and the Netherlands are a particularly positive feature. It is RWE Dea UK’s plan to reach an annual production level of 1.5 bcm in 2008. Most of RWE Dea UK’s produced gas is delivered to the UK as a supply to RWE’s downstream activities. RWE npower is a leading integrated UK energy company and is also part of the RWE Group.



RWE Dea UK operates from an office in central London. It employs highly specialised upstream experts and cooperates with competent partners in numerous projects. An offshore operations base is located in Great Yarmouth.



**Drilling on Cavendish:**

The Cavendish field in the UK sector of the Southern North Sea Gas Basin commenced production in July 2007.

RWE Dea also has interests in the gas fields Mimas, Saturn and Tethys, all located in the UK sector of the North Sea, and operated by ConocoPhillips. These fields came on stream in 2005 and 2007 respectively.





### **Producing Fields**

RWE Dea UK currently has interests in nine producing gas fields: Anglia, Cavendish, Markham, Mimas, Minke, Saturn, Tethys, Victor and Windermere. The company is operator of Cavendish and Windermere. These fields all produce gas from Rotliegendes and Carboniferous reservoirs and have robust production profiles. There are 32 wells in production at present. Since July 2007, gas has been delivered from the Cavendish field, RWE Dea's first operated development project in the United Kingdom, and transported onward to the Theddlethorpe Gas Terminal. With initial production rates of 1.6 million m<sup>3</sup>/d, the Cavendish field is one of the building blocks to boosting the level of RWE Dea's current UK production. The company's share of this will be about 0.8 million m<sup>3</sup>/d, which currently represents about 20% of its total UK daily production capacity.

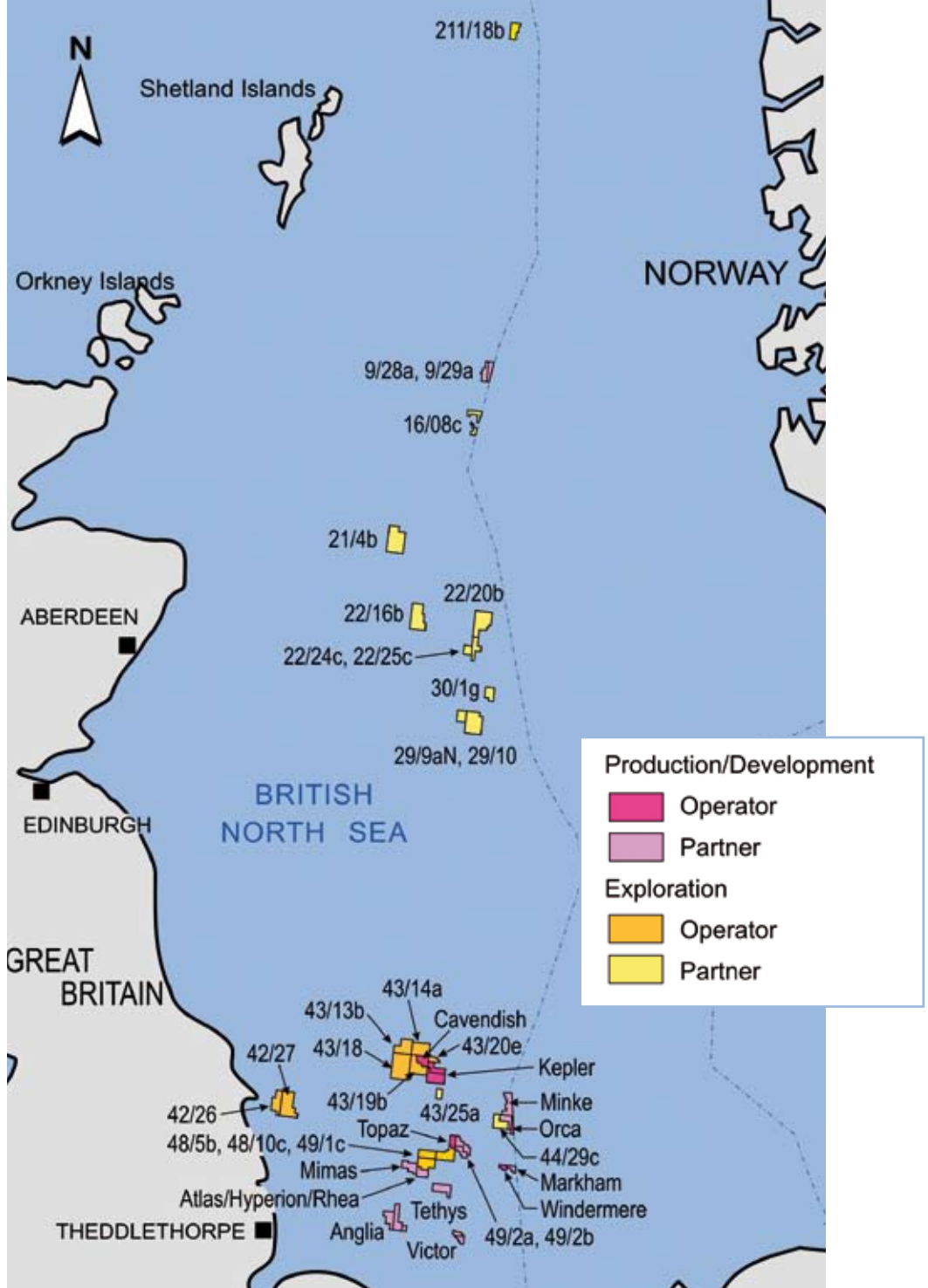
The ConocoPhillips operated Saturn area development continued into 2007 and was concluded with the production start of the satellites Mimas and Tethys, which now produce in addition to the main Saturn fields: Atlas, Hyperion, and Rhea. RWE Dea UK's interest in these fields delivers ca. 60% of its current production. In addition to the Windermere and Markham fields, which both provide gas to the continental market through the Westgastransport (WGT) pipeline system, the Gaz de France Britain operated Minke field came on stream in 2007 with an export line to the Netherlands via the Noordgastransport (NGT) pipeline system. These fields have an important strategic position along the UK/Dutch median line.

### **Development Fields**

RWE Dea UK has interests in further gas and gas condensate development projects: Kepler, Devenick, Orca and Topaz. Both Orca and Topaz development plans are currently being prepared and both fields are planned to be on stream in 2009. The Cavendish satellite project in block 43/20b, Kepler, is likely to be developed following an appraisal well in 2008 and be on stream in 2010. Devenick is a gas condensate project in the Central North Sea, which the company also expects to be on stream in 2010.

### **Exploration**

Since its arrival in the UK in 2002, RWE Dea has participated successfully in all UKCS licence rounds and is seeking further exploration opportunities in order to balance the production and development portfolio and achieve sustainability of its UK activities. Evidence of this was the latest farm-in to Elixir and Sosina's 211/18b well, which is expected to be drilled in 2008. These activities have expanded RWE Dea UK's portfolio to include the Central and Northern North Sea.



RWE Dea's assets are concentrated in the UK sector of the Southern North Sea Gas Basin. Exploration activities expand into the Central North Sea HPHT area.

***Policy Statement for Health & Safety and Environmental Management (Extract)***

RWE Dea UK, comprising RWE Dea Holdings Ltd, RWE Dea UK Ltd, RWE Dea UK SNS Ltd, RWE Dea UK Exploration Ltd and RWE Dea UK Development Ltd,

recognises its moral and legal obligations to conduct its activities in a manner which promotes the health and safety of its employees and others effected, and protects the natural environment. The company is committed to Health, Safety and Environmental management.



RWE Dea UK Ltd  
4th Floor  
90 High Holborn  
London WC1V 6LJ  
T +44 20 7421 5510  
F +44 20 7421 5525  
E [info@rwedea.co.uk](mailto:info@rwedea.co.uk)  
I [www.rwedea.co.uk](http://www.rwedea.co.uk)

