

# Wind Power News



Ffynnon Oer Wind Farm near Neath, South Wales. Constructed by RWE npower renewables in 2006. Photographs of existing operational wind farms within this newsletter are not intended to represent the appearance of the proposed Clocaenog Forest Wind Farm.

## Welcome to the Clocaenog Forest Wind Farm newsletter

This August, RWE npower renewables is launching its formal consultation period for the Clocaenog Forest Wind Farm.

### Background

RWE npower renewables is proposing to build a wind farm with a generating capacity of up to 96 megawatts (MW), at Clocaenog Forest, Denbighshire and Conwy. This will involve the construction of 32 wind turbines, 6.11km of new access tracks and the upgrade of around 31.89km of existing access tracks. It will also involve other wind farm components including an onsite substation and compound, underground cabling, two permanent windspeed monitoring masts and three compounds (two civil and one electrical) during the construction phase.

As the generating capacity of the wind farm is over 50 megawatts (MW), an application for Development Consent

will be submitted to the Infrastructure Planning Commission (IPC) under the provisions of the Planning Act 2008 (the Act).

The Act requires applicants to carry out pre-application consultation on the development proposal under Section 42. Groups that must be consulted include local authorities, a prescribed list of public and regulatory bodies and those who own or have an interest in the land affected by the project.

In addition, RWE npower renewables, as the applicant, must consult with the local community under Section 47 of the Act. In December 2010, RWE npower renewables published a Statement of Community

The consultation period will start on August 4, 2011 and will last for 56 days. All consultation responses must be received by 5pm on September 28, 2011 to be considered. The Clocaenog Forest team look forward to meeting you at our public exhibitions – details of which are included in this newsletter – and to discussing our proposals for Clocaenog Forest.

Consultation (SoCC) which outlined how we will consult local people on our plans to develop the Clocaenog Forest Wind Farm.

Comments made during the consultation process will be recorded and considered carefully by the project team. A consultation report will be prepared, setting out the comments and feedback that has been received and describing how the issues raised have been dealt with. The IPC must take into account the consultation report in its consideration of the application.

# What are we consulting on?

During the consultation period, we will be consulting local people, users of the forest and prescribed consultees about the Clocaenog Forest Wind Farm project.

The Infrastructure Planning (Environmental Impact Assessment) Regulations 2009 require us to consult on 'preliminary environmental information'. For the purposes of this consultation, the 'preliminary environmental information' is a full draft Environmental Statement for the site, setting out all of the environmental work that has been completed at Clocaenog Forest to date.

A number of documents will be available for consideration during the consultation period:

- a full draft Environmental Statement which sets out the results of the assessment of likely impacts of the wind farm development on the environment, including mitigation measures to minimise any predicted environmental impacts

- a non-technical summary of the draft Environmental Statement – available in English and Welsh.

We will be seeking opinions about the proposal, including ways in which it may be changed or improved. People may like to comment on how the benefits of the scheme could be maximised or how impacts can be minimised.

It is important to be clear about what we are and what we are not consulting on. The following table provides a breakdown of example subjects:

Consulting on	Not consulting on
Turbine layout	The need for renewable energy
Siting of other infrastructure	Suitability of the Clocaenog Forest Strategic Search Area for wind farm development
Surveys undertaken	The grid connection (subject to a separate application)
Proposed mitigation	

# How are we consulting?

Local consultation will take place as described in our SoCC, which is available on our website – [www.npower-renewables.com/clocaenogforest](http://www.npower-renewables.com/clocaenogforest)

Throughout the consultation period, the full consultation materials will be available at a number of local venues. In addition, consultation exhibitions will take place in venues near to the Clocaenog Forest.

The events will give local people the chance to find out more about the plans to develop a new wind farm and formally give their views.

Consultation materials will also be available on our website – [www.npower-renewables.com/clocaenogforest](http://www.npower-renewables.com/clocaenogforest) and copies of the non-technical summary are available free of charge on request. If you wish to purchase a copy of the Environmental Statement, DVD copies are available for £10 and in hard copy format at a cost of £250.

Venues where documents will be available:

**Cerrigydrudion Post Office**  
(Monday to Friday: 9am – 5.30pm,  
Saturday: 9am – 12.30pm)  
King Street, Cerrigydrudion, LL21 9SU

**Siop-y-Fro**  
(Monday to Friday: 8am – 1pm, 3pm – 6pm,  
Saturday: 9am – 1pm)  
Canolfan Cae Cymro, Clawddnewydd,  
Ruthin, LL15 2ND

**Denbigh Library** (Monday: 9.30am – 7pm.  
Tuesday, Wednesday and Friday: 9.30am – 5pm. Thursday: 1pm – 5pm. Saturday: 9.30am – 12.30pm)  
Hall Square, Denbigh, LL16 3NU

## Public exhibitions details

**Thursday 18 August 2011**

**2pm – 8pm**

Cerrigydrudion Community Centre,  
Canolfan Addysg Uwchaled,  
Cerrigydrudion, LL21 9SW

**Friday 19 August 2011**

**1pm – 7pm**

Llanfwrog Community Centre,  
Mwrog Street, Ruthin, LL15 1LE

**Saturday 20 August 2011**

**10am – 3pm**

Clawddnewydd Community Centre,  
Canolfan Cae Cymro, Clawddnewydd,  
Ruthin, LL15 2ND

**Thursday 8 September 2011**

**2pm – 8pm**

Denbigh Town Hall, Crown Square,  
Denbigh, Denbighshire, LL16 3TB

**Friday 9 September 2011**

**1pm – 7pm**

Clawddnewydd Community Centre,  
Canolfan Cae Cymro, Clawddnewydd,  
Ruthin, LL15 2ND

**Saturday 10 September 2011**

**10am – 3pm**

Llansannan Community Centre,  
Bro Aled County Primary School,  
Llansannan, Denbigh, LL16 5HN

**Ruthin Library** (Monday, Thursday and Friday: 9.30am – 5pm. Tuesday: 9.30am – 7pm, Wednesday: 9.30am – 1pm, Saturday: 9.30am – 12.30pm)  
Record Street, Ruthin, LL15 1DS

**Llansannan Post Office**

(Monday: 2.30pm – 4.30pm, Tuesday: 9.30 – 12.30pm, Thursday: 9.30am – 11.30am)  
Canol Y Llan, Llansannan, LL16 5HG

**Conwy Planning Office**

(Monday to Friday: 9am – 5pm)

Planning Services, Conwy County Borough Council, Civic Offices, Colwyn Bay, Conwy, LL29 8AR

**Denbigh Planning Office**

(Monday to Friday: 9am – 5pm)

Development Control, Caledfryn, Smithfield Road, Denbigh, LL16 3RU

# How to respond to the consultation

RWE npower renewables is keen for people to respond in writing. Comments can be made by filling in a feedback form with a number of set questions which can be sent out on request. It is available on our website and can be picked up at the exhibitions.

Alternatively, you can write to us or email us with your feedback on the proposals. We request that any responses include contact information including a name and an address

to which any correspondence relating to the consultation can be sent.

Please note that your feedback and contact details will be documented in a Consultation Report which will form part of the application for Development Consent submitted to the Infrastructure Planning Commission (IPC).

Consultation responses must be received by 5pm on September 28th, 2011.

## Contact us

Clocaenog Forest Consultation,  
RWE npower renewables Unit 22:  
Baglan Bay Innovation Centre,  
Baglan Energy Park, Central Ave, Baglan,  
Port Talbot, West Glamorgan, SA12 7AX

Email: [clocaenog@npower-renewables.com](mailto:clocaenog@npower-renewables.com)  
Phone (information only): 01639 816180  
Website: [www.npower-renewables.com/clocaenogforest](http://www.npower-renewables.com/clocaenogforest)

## Project details

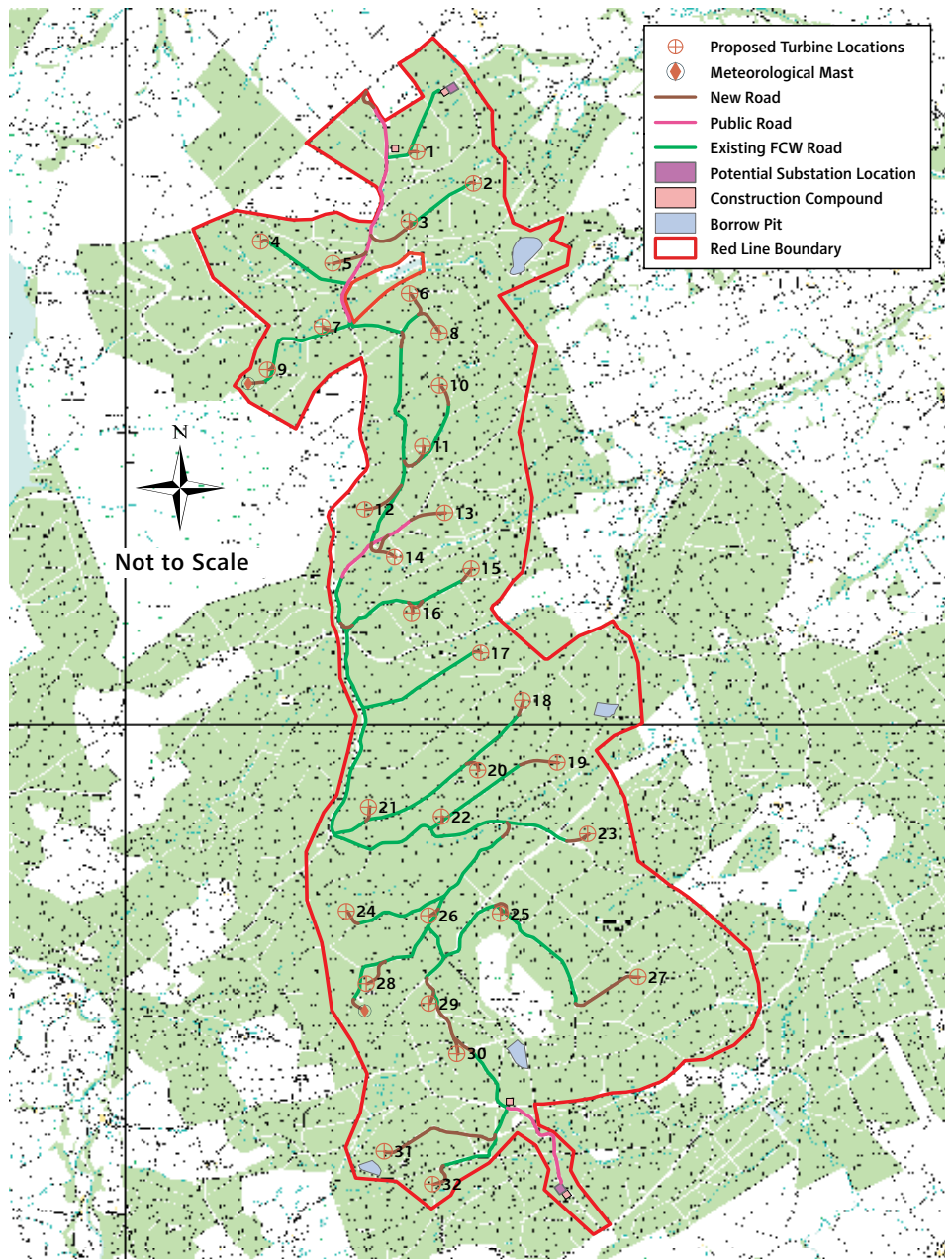
The main components of the scheme are:

- 32 wind turbines (each with a maximum height to blade tip of 145 metres) and external transformer units
- two anemometry masts for measuring wind speed (maximum height of 100m)
- the proposals also involve installing 6.11km of new access tracks and upgrading 3.95km of public roads and 31.89km of existing forestry roads
- underground cables between turbines
- a substation and compound
- four borrow pits for the extraction of stone
- two civil and one electrical construction compounds during construction.

Clocaenog Forest Wind Farm could accommodate an installed capacity of up to 96 megawatts (MW). The average annual generation expected at the site would be equivalent to the approximate domestic needs of up to 42,100 average UK households. This figure is based on annual electricity consumption per home of 4,700 kWh and is supported by recent domestic electricity consumption data available from The Digest of UK Energy Statistics and household estimates and projections from the UK Statistics Authority.

Subject to Development Consent being issued, construction is likely to last up to 24 months depending on weather conditions. A period of felling works will take place prior to construction and will be undertaken by Forestry Commission Wales staff and contractors on behalf of RWE npower renewables.

The wind farm has been designed with an operational life of 25 years. At the end of this period the turbines will be dismantled and removed from the site, unless further Development Consent is sought.



Clocaenog Forest – site layout. Mapping purchased from emapsite™. Reproduced from Ordnance Survey digital map data © Crown copyright 2010. All rights reserved. Licence number 0100031673.

It is estimated that the decommissioning of the wind farm will be carried out over a period of approximately 12 months.

# Clocaenog Forest Wind Farm – Q and A

Project Manager Martin Cole answers some questions about proposals for the Clocaenog Forest Wind Farm.

## Why are you developing a wind farm at Clocaenog Forest?

The UK is facing an impending energy gap. To fill this gap, we need an energy mix which includes low carbon renewable energy from wind. As the most viable current option for delivering clean energy, wind power has a crucial role to play in reducing carbon emissions, not just in the future, but right now. The Welsh Government has identified the Clocaenog Forest as a strategic area suitable for wind farm development.

## What will the Clocaenog Forest Wind Farm look like?

The turbines of the Clocaenog Forest Wind Farm lie wholly within TAN 8 Strategic Search Area A (SSA A), which is recognised at a national level as being a suitable area for wind farm development, and in which landscape change is expected. However, we have designed our scheme to minimise the visual impact. Viewpoints from 25 different locations are available on our website and at our exhibitions.

## How is Forestry Commission Wales involved at Clocaenog Forest?

Forestry Commission Wales (FCW) is acting on behalf of the Welsh Government to facilitate the development of the wind farm in the Clocaenog Forest.

In 2008, Option Agreements on land within the Assembly Government Woodland Estate (AGWE) were signed with selected developers including RWE npower renewables. In Clocaenog Forest, the agreement gives us the right to apply for consent to develop wind farms within SSA A and an option to enter into a 25-year lease, should consent be received and a wind farm built. FCW underlined that wind farm developments on

land managed by FCW are to be integrated into the forest, rather than replacing it.

## What kind of benefits will the wind farms bring to the area?

If we are successful in gaining Development Consent for the project, RWE npower renewables will offer a community benefits package designed to specifically meet the needs of the local community.

Subject to the size of the project in terms of MW installed capacity, we expect the community benefits package to be worth up to **£480,000** each year that the site is operational. This is based on a **96MW** wind farm and **January 2007** prices. This sum is **RPI-linked for the lifetime of the wind farm.**

We expect this package would include a one-off payment to support environmental education and energy efficiency activities in local schools, an allocation of funding to cover the costs of administering the package and the main package itself, which will be defined following local consultation.

## How will you be consulting on your proposals?

RWE npower renewables developed a Statement of Community Consultation (SoCC) in consultation with both Denbighshire County Council and Conwy County Borough Council. We have established a 56-day consultation period, twice the minimum length of 28 days, to consult with local people and prescribed consultees. The consultation period will start on **August 4th, 2011** and will last for 56 days. All Consultation responses must be received by 5pm on **September 28th, 2011.**

Throughout the consultation period, the full consultation materials will be available



at a number of local venues. In addition, consultation exhibitions will take place in venues near to the Clocaenog Forest. This community newsletter is being sent to all homes within 5km of the Clocaenog Forest Wind Farm boundary and local wards. We are also issuing press releases and placing formal adverts in the press.

Throughout the consultation period, we are keen to hear local people's views in order to allow us to create the best possible scheme. We will ensure that all responses are recorded, reviewed, responded to and finally, reported in a Consultation Report which will be submitted with the application for Development Consent.

If you would like this newsletter in larger print please contact us on:  
**01639 816180**

This booklet is printed on paper which is made from FSC certified pulp and has been printed using vegetable inks.

## Contact us

If you have any questions about the proposal then members of the project team would be pleased to meet you at the public exhibitions.

However, if you are unable to attend, please don't hesitate to contact the team.

**E-mail**  
[clocaenog@npower-renewables.com](mailto:clocaenog@npower-renewables.com)

**Telephone**  
01639 816180

**Web**  
Our website is regularly updated:  
[www.npower-renewables.com/clocaenogforest](http://www.npower-renewables.com/clocaenogforest)



**Post**  
Clocaenog Forest Wind Farm Consultation,  
RWE npower renewables Unit 22:  
Baglan Bay Innovation Centre, Baglan  
Energy Park, Central Ave, Baglan,  
Port Talbot, West Glamorgan, SA12 7AX

# Newyddion Ynni Gwynt



Fferm Wynt Ffynnon Oer ger Castell-nedd, De Cymru. Adeiladwyd gan RWE npower renewables yn 2006. Nid yw lluniau'r ffermydd gwynt gweithredol a geir yn y cylchlythyr hwn yn cynrychioli ymddangosiad Fferm Wynt arfaethedig Coedwig Brechfa.

## Croeso i gylchlythyr Fferm Wynt Coedwig Clocaenog

Ym mis Awst eleni, mae RWE npower renewables yn lansio'i gyfnod ymgynghori ffurfiol ar gyfer Fferm Wynt Coedwig Clocaenog.

### Y Cefndir

Mae RWE npower renewables yn bwriadu adeiladu fferm wynt a fydd yn gallu cynhyrchu yfynni at 96 megawat (MW) yng Nghoedwig Clocaenog, Sir Ddinbych a Conwy. Bydd y gwaith yn cynnwys codi 32 tyrbîn gwynt, creu 6.11km o lonydd mynediad newydd ac uwchraddio tua 31.89km o lonydd mynediad sydd yno eisoes. Bydd hefyd yn cynnwys elfennau eraill o'r fferm wynt fel is-orsaf ar y safle a chompownd, ceblau tanddaearol, dau fast parhaol i fonitro cyflymder y gwynt a thri compownd (dau sifil ac un trydanol) yn ystod y cyfnod adeiladu.

Gan y bydd y fferm wynt yn gallu cynhyrchu dros 50 megawat (MW), bydd cais am

Ganiatâd Datblygu'n cael ei gyflwyno i'r Comisiwn Cynllunio Seilwaith (CCS) o dan ddarpariaethau Deddf Cynllunio 2008 (y Ddeddf).

O dan Adran 42 o'r Ddeddf, mae'n rhaid i ymgeiswyr gynnal ymgynghoriad ar y cynllun datblygu cyn gwneud y cais. Ymhlith y grwpiau y mae'n rhaid ymgynghori â nhw mae'r awdurdodau lleol, rhestr benodol o gyrff cyhoeddus a chyrrff rheoleiddio, perchenogion y tir y mae'r prosiect yn effeithio arno a phobl sydd â buddiant yn y tir hwnnw.

Yn ogystal, mae'n rhaid i RWE npower renewables, sef yr ymgeisydd, ymgynghori â'r gymuned leol o dan Adran 47 o'r Ddeddf. Ym mis Rhagfyr 2010, cyhoeddodd RWE npower renewables Ddatganiad

Bydd y cyfnod ymgynghori yn dechrau ar Awst 04, 2011 ac yn para am 56 o ddiwrnodau. Mae'n rhaid i bob ymateb i'r Ymgynghoriad ddod i law erbyn 5pm ar Fedi 28, 2011 er mwyn ei ystyried. Mae tîm Fferm Wynt Coedwig Clocaenog yn edrych ymlaen at gwrdd â chi yn ein harddangosfeydd cyhoeddus – mae'r manylion yn y cylchlythyr hwn – ac at drafod ein cynlluniau ar gyfer Coedwig Clocaenog.

ynghylch Ymgynghori â'r Gymuned (DYYAG) yn amlinellu'r ffordd y byddwn yn ymgynghori â'r bobl leol ar ein cynlluniau i ddatblygu Fferm Wynt Coedwig Clocaenog.

Caiff y sylwadau a wneir yn ystod y broses ymgynghori eu cofnodi a'u hystyried yn ofalus gan dîm y prosiect. Caiff adroddiad ei lunio ar yr ymgynghoriad, yn nodi'r sylwadau a'r ymateb a gafwyd ac yn disgrifio sut y deliwyd â'r materion a godwyd. Bydd raid i'r CCS dalu sylw i'r adroddiad ar yr ymgynghoriad wrth ystyried y cais.

# Beth rydyn ni'n ymgynghori arno?

Yn ystod y cyfnod ymgynghori, byddwn yn ymgynghori â phobl leol, defnyddwyr y goedwig ac ymgynghorion penodol am brosiect Fferm Wynt Coedwig Clocaenog.

O dan y Rheoliadau Cynllunio Seilwaith (Asesu Effeithiau Amgylcheddol) 2009, mae'n ofynnol i ni ymgynghori ar 'wybodaeth amgylcheddol ragarweiniol'. At ddibenion yr ymgynghoriad hwn, mae'r 'wybodaeth amgylcheddol ragarweiniol' yn golygu Datganiad Amgylcheddol drafft llawn ar gyfer y safle, yn nodi'r holl waith amgylcheddol a wnaed yng Nghoedwig Clocaenog hyd yma.

Bydd nifer o ddogfennau ar gael i'w hystyried yn ystod y cyfnod ymgynghori:

- Datganiad Amgylcheddol drafft llawn yn nodi canlyniadau'r gwaith o asesu effeithiau tebygol datblygu'r fferm wynt ar yr amgylchedd, yn cynnwys camau lliniaru i leihau unrhyw effeithiau amgylcheddol disgwylidig

- Crynodeb annhechnegol o'r Datganiad Amgylcheddol drafft - ar gael yn y Gymraeg a'r Saesneg

Byddwn yn ceisio barn pobl am y cynllun, yn cynnwys ffyrdd y gellir ei newid neu ei wella. Efallai y bydd pobl yn dymuno awgrymu sut y gellid elwa i'r eithaf ar fanteision y cynllun neu leihau unrhyw effeithiau niweidiol.

Mae'n bwysig deall yn iawn beth yr ydym yn ymgynghori arno a beth nad ydym yn ymgynghori arno. Mae'r tabl isod yn rhoi enghreifftiau o'r pynciau:

Yn ymgynghori ar	Ddim yn ymgynghori ar
Gosodiad y tyrbinau	Yr angen am ynni adnewyddadwy
Lleoliad seilwaith arall	Addasrwydd Ardal Chwilio Strategol Coedwig Clocaenog fel safle ar gyfer fferm wynt
Arolygon a gynhaliwyd	Y cysylltiad â'r grid (Bydd angen gwneud cais arall ar gyfer hyn)
Camau lliniaru posibl	

## Sut yr ydym yn ymgynghori

Byddwn yn ymgynghori'n lleol fel y disgrifir yn ein DYYAG, sydd i'w weld ar ein gwefan - [www.npower-renewables.com/clocaenogforest](http://www.npower-renewables.com/clocaenogforest)

Trwy gydol y cyfnod ymgynghori, bydd y defnyddiau ymgynghori i gyd ar gael mewn nifer o ganolfannau lleol. Yn ogystal, bydd arddangosfeydd ymgynghori mewn canolfannau ger Coedwig Clocaenog. Bydd y rhain yn gyfle i bobl leol gael gwybod mwy am y cynlluniau i ddatblygu fferm wynt newydd ac i roi eu barn yn ffurfiol.

Bydd defnyddiau ymgynghori ar gael ar ein gwefan hefyd - [www.npower-renewables.com/clocaenogforest](http://www.npower-renewables.com/clocaenogforest) ac mae copïau o'r crynodeb annhechnegol ar gael am ddim os gofynnwch amdanynt. Os hoffech brynu copi o'r Datganiad Amgylcheddol, mae copïau ar DVD ar gael am £10 a chopïau papur am £250.

Mannau lle bydd y dogfennau ar gael: **Swyddfa Bost Cerrigydrudion** (Llun tan Gwener: 9yb - 5.30yh, Sadwrn: 9yb-12.30yh) Stryd y Brenin, Cerrigydrudion, LL21 9SU

**Siop-y-Fro** (Llun tan Gwener: 8yb - 1yh, 3yh - 6yh, Sadwrn: 9yb - 1yh) Canolfan Cae Cymro, Clawddnewydd, Rhuthun, LL15 2ND

**Llyfrgell Dinbych** (Llun: 9.30yb - 7yh, Mawrth, Mercher a Gwener: 9.30yb - 5yh, Iau: 1yh - 5yh, Sadwrn: 9.30yb - 12.30yh) Hall Square, Dinbych, LL16 3NU

## Arddangosfeydd Cyhoeddus

**Dydd Iau 18 Awst 2011**

**2yh - 8yh**

Canolfan Gymuned Cerrigydrudion, Canolfan Addysg Uwchaled, Cerrigydrudion, LL21 9SW

**Dydd Gwener 19 Awst 2011**

**1yh - 7yh**

Canolfan Gymuned Llanfwrog, Mwrog Street, Rhuthun, LL15 1LE

**Dydd Sadwrn 20 Awst 2011**

**10yb - 3yh**

Canolfan Gymuned Clawddnewydd, Canolfan Cae Cymro, Clawddnewydd, Rhuthun, LL15 2ND

**Dydd Iau 8 Medi 2011**

**2yh - 8yh**

Neuadd y Dref Dinbych, Crown Square, Dinbych, Sir Ddinbych, LL16 3TB

**Dydd Gwener 9 Medi 2011**

**1yh - 7yh**

Canolfan Gymuned Clawddnewydd, Canolfan Cae Cymro, Clawddnewydd, Rhuthun, LL15 2ND

**Dydd Sadwrn 10 Medi 2011**

**10yb - 3yh**

Canolfan Gymuned Llansannan, Ysgol Bro Aled, Llansannan, Dinbych, LL16 5HN

### Llyfrgell Rhuthun

(Llun, Iau a Gwener: 9.30yb - 5yh, Mawrth: 9.30yb - 7yh, Mercher: 9.30yb - 1yh, Sadwrn: 9.30yb - 12.30yh) Record Street, Rhuthun, LL15 1DS

### Swyddfa Bost Llansannan

(Llun: 2.30yh - 4.30yh, Mawrth: 9.30yb - 12.30yh, Iau: 9.30yb - 11.30yb) Canol y Llan, Llansannan, LL16 5HG

### Swyddfa Gynllunio Conwy

(Llun tan Gwener: 9yb - 5yh) Gwasanaethau Cynllunio, Cyngor Bwrdeistref Sirol Conwy, y Swyddfeydd Dinesig, Bae Colwyn, Conwy LL29 8AR

### Swyddfa Gynllunio Dinbych

(Llun tan Gwener: 9yb - 5yh) Rheoli Datblygiad, Caledfryn, Ffordd y Ffair, Dinbych, LL16 3RU

# Sut i ymateb i'r ymgynghoriad

Mae RWE npower renewables yn awyddus i bobl ymateb mewn ysgrifen. Gellir cyflwyno sylwadau trwy lenwi ffurflen ymateb sy'n cynnwys nifer o gwestiynau penodol. Gallwn anfon copi o'r ffurflen atoch, mae i'w gweld ar ein wefan neu gallwch gael copi yn yr arddangosfeydd. Neu, gallwch ysgrifennu atom neu anfon neges e-bost yn cyflwyno'ch ymateb i'r cynlluniau. Gofynnwn i chi roi eich manylion cysylltu ar eich ymateb, yn cynnwys

enw a chyfeiriad lle gallwn anfon gohebiaeth am yr ymgynghoriad atoch.

Caiff eich ymateb a'ch manylion cysylltu eu cynnwys mewn Adroddiad ar yr Ymgynghoriad a fydd yn rhan o'r cais am Ganiatâd Datblygu a gyflwynir i'r Comisiwn Cynllunio Seilwaith.

Mae'n rhaid i'r ymatebion i'r Ymgynghoriad ddod i law erbyn 5pm ar Fedi 28, 2011.

## Cysylltu â ni

Ymgynghoriad Coedwig Clocaenog, RWE npower renewables, Uned 22, Baglan Bay Innovation Centre, Baglan Energy Park, Central Avenue, Baglan, Port Talbot, Gorllewin Morgannwg SA12 7AX  
E-bost: [clocaenog@npower-renewables.com](mailto:clocaenog@npower-renewables.com)  
Ffôn (er gwybodaeth yn unig): 01639 816180  
Gwefan: [www.npower-renewables.com/clocaenogforest](http://www.npower-renewables.com/clocaenogforest)

## Manylion y prosiect

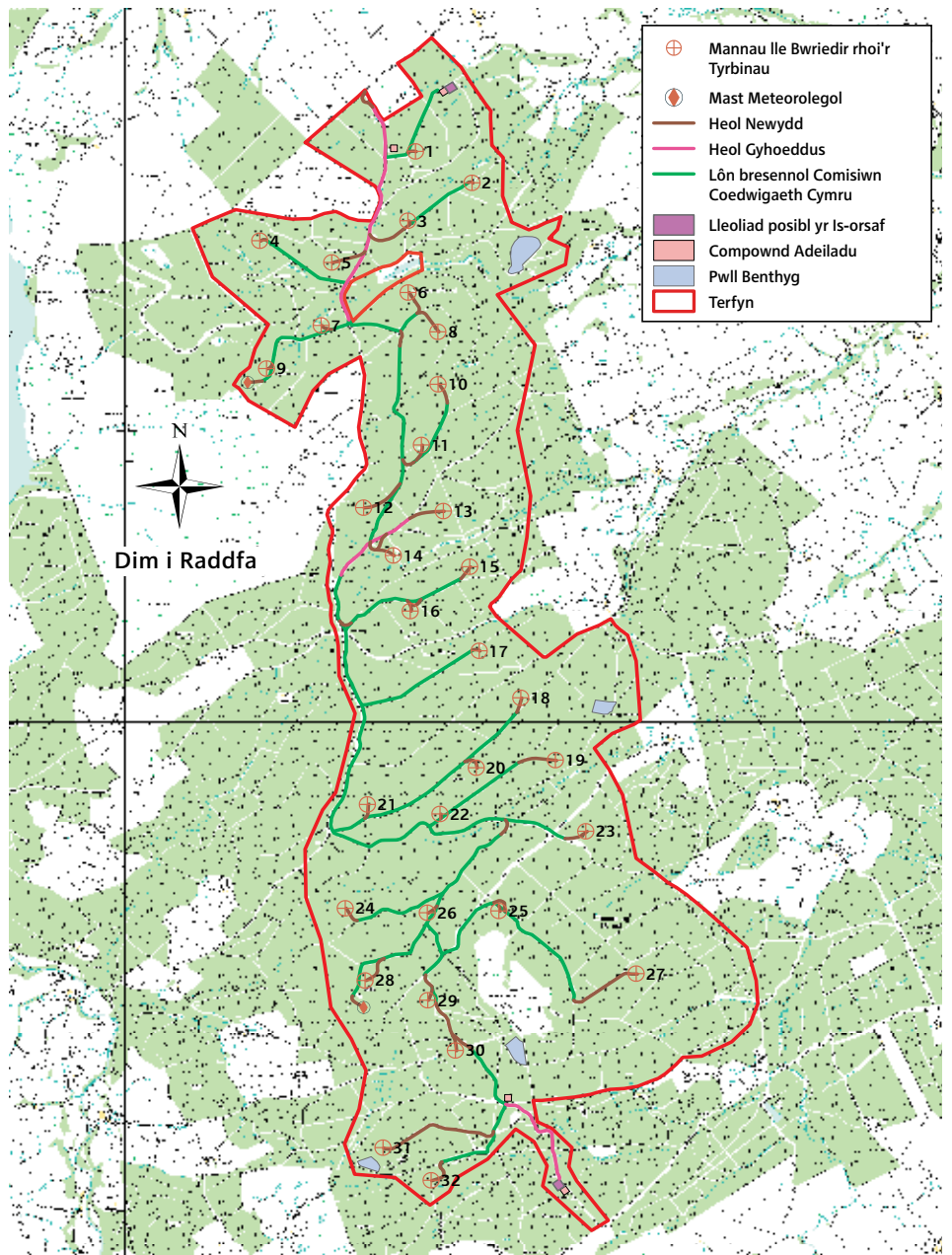
Dyma brif elfennau'r cynllun:

- 32 o dyrbinau gwynt (pob un yn mesur hyd at 145 metr o uchder i flaen y llafn); ac unedau allanol ar gyfer y newyddion
- Dau fast parhaol i fesur cyflymder y gwynt (hyd at 100m o uchder)
- Yn ogystal, mae'r cynlluniau'n cynnwys creu 6.11km o lonydd mynediad newydd ac uwchraddio 3.95km o ffyrdd cyhoeddus a 31.89km o ffyrdd presennol y goedwig
- Ceblau tanddaearol rhwng y tyrbinau
- Is-orsaf a chompownd
- Pedwar pwll benthig i gloddio cerrig; a
- Dau gompownd gwaith adeiladu sifil ac un compownd gwaith trydan yn ystod y gwaith adeiladu.

Gallai Fferm Wynt Coedwig Clocaenog gynhyrchu yfynni at 96 megawat (MW). Byddai disgwyl i'r safle gynhyrchu digon o drydan mewn blwyddyn ar gyfartaledd i gyflenwi anghenion domestig hyd at tua 42,100 o gartrefi cyffredin. Wrth gyfrif nifer y cartrefi y gellid eu cyflenwi, cymerir bod pob cartref yn defnyddio 4,700 kWh o drydan y flwyddyn. Mae'r ffigwr hwn yn cyfateb i'r data diweddar am swm y trydan a ddefnyddir mewn cartrefi yn y Digest of UK Energy Statistics ac amcangyfrifon ac amcanestyniadau gan Awdurdod Ystadegau'r DU.

Ar yr amod y rhoddir Caniatâd Datblygu, mae'n debygol y bydd y gwaith adeiladu'n para hyd at 24 mis, yn dibynnu ar y tywydd. Bydd angen cwmpo coed cyn dechrau ar y gwaith adeiladu. Staff a chontractwyr Comisiwn Coedwigaeth Cymru fydd yn gwneud hyn ar ran RWE npower renewables.

Mae'r fferm wynt wedi'i dylunio ar gyfer oes



Coedwig Clocaenog - Gosodiad Y Safle. Prynwyd y mapiau o emapsite™. Atgynhyrchwyd o ddata mapio digidol Arolwg Ordnans © Hawlfraint y Goron 2010. Cedwir pob hawl. Rhif trwydded 0100031673.

weithredol o 25 mlynedd. Ar ddiwedd y cyfnod hwn, caiff y tyrbinau eu tynnu i lawr a'u symud o'r safle os na wneir cais am

Ganiatâd Datblygu pellach. Amcangyfrifir y bydd gwaith dadgomisiynu'r fferm wynt yn cymryd tua 12 mis.

# Fferm Wynt Coedwig Clocaenog – Holi ac Ateb

Rheolwr y Prosiect, Martin Cole yn ateb cwestiynau am y cynlluniau ar gyfer Fferm Wynt Coedwig Clocaenog.

## Pam rydych chi'n datblygu fferm wynt yng Nghoedwig Clocaenog?

Mae'r Deyrnas Unedig yn wynebu cyfnod o brinder ynni. Mewn ymateb i hyn, mae arnom angen cyfuniad o ynni sy'n cynnwys ynni adnewyddadwy carbon-isel o wynt. Ynni gwynt yw'r ffordd fwyaf ymarferol o gyflenwi ynni glân ar hyn o bryd ac mae ganddo ran bwysig i'w chwarae o ran gostwng allyriadau carbon, nid dim ond yn y dyfodol, ond heddiw hefyd. Mae Llywodraeth Cymru wedi dynodi Coedwig Clocaenog yn ardal strategol sy'n addas ar gyfer datblygu ffermydd gwynt.

## Sut y bydd Fferm Wynt Coedwig Clocaenog yn edrych?

Bydd tyrbinau Fferm Wynt Coedwig Clocaenog i gyd o fewn Ardal Chwilio Strategol A (AChS A) TAN 8 sy'n ardal a gydnabyddir ar lefel y DU fel ardal addas ar gyfer datblygu ffermydd gwynt, ac yn dirwedd lle disgwylir newid. Serch hynny, rŷn ni wedi dylunio'r cynllun mewn ffordd sy'n lleihau'r effaith weledol. Mae'r olygfa o 25 o wahanol fannau i'w gweld ar ein gwefan ac yn ein harddangosfeydd.

## Pa ran y mae Comisiwn Coedwigaeth Cymru yn ei chwarae yng Nghoedwig Clocaenog?

Mae Comisiwn Coedwigaeth Cymru yn gweithredu ar ran Llywodraeth Cymru i hwyluso datblygiad y fferm wynt yng Nghoedwig Clocaenog.

Yn 2008, llofnodwyd Cytundebau Opsiwn ar dir yn Ystad Goed Llywodraeth y Cynulliad (AGWE) gyda nifer o ddatblygwyr yn cynnwys RWE npower renewables. Yng Nghoedwig Clocaenog, mae'r cytundeb yn rhoi'r hawl i ni wneud cais am ganiatâd i ddatblygu ffermydd gwynt yn AChS A ac opsiwn i ymrwymo i brydles 25 mlynedd os ceir caniatâd ac y datblygir fferm wynt. Pwysleisiodd Comisiwn Coedwigaeth Cymru bod rhaid i ffermydd

gwynt a ddatblygir ar dir sy'n cael ei reoli gan y Comisiwn gael eu cynnwys fel rhan o'r goedwig, yn hytrach na chymryd lle'r goedwig.

## Pa fath o fanteision a ddaw i'r ardal gyda'r ffermydd gwynt?

Os cawn Ganiatâd Datblygu ar gyfer y prosiect, mae RWE npower renewables yn bwriadu cynnig pecyn o fanteision cymunedol gyda'r nod o ddiwallu anghenion penodol y gymuned leol. Yn dibynnu ar faint y prosiect o ran y MW y gellir eu cynhyrchu, disgwylwn i'r pecyn manteision cymunedol fod yn werth hyd at £480,000 bob blwyddyn y bydd y safle'n gweithio. Seilir hyn ar fferm wynt 96MW a phrisiau Ionawr 2007. Mae'r swm hwn yn cael ei addasu yn unol â'r Mynegai Prisiau Manwerthu am oes y fferm wynt.

Disgwylwn i'r pecyn hwn gynnwys taliad unigol ar gyfer gweithgareddau addysg amgylcheddol a gweithgareddau arbed ynni mewn ysgolion lleol, arian i dalu am weinyddu'r pecyn a'r prif becyn ei hunan, a ddiffinnir ar ôl ymgynghori yn yr ardal.

## Sut fyddwch chi'n ymgynghori ar eich cynlluniau?

Mae RWE npower renewables wedi datblygu Datganiad ynghylch Ymgynghori â'r Gymuned mewn ymgynghoriad â Chyngor Sir Ddinbych a Chyngor Bwrdeistref Sirol Conwy. Rydym wedi pennu cyfnod ymgynghori o 56 diwrnod, sef dwywaith yr hyd gofynnol o 28 diwrnod, er mwyn ymgynghori â phobl yr ardal a nifer o gyrff cyhoeddus. Bydd y cyfnod ymgynghori yn dechrau ar **Awst 04, 2011** ac yn para am 56 o ddiwrnodau. Mae'n rhaid i'r ymatebion i'r Ymgynghoriad ddod i law erbyn 5pm ar **Fedi 28, 2011**.

Trwy gydol y cyfnod ymgynghori, bydd y



defnyddiau ymgynghori i gyd ar gael mewn nifer o ganolfannau lleol. Yn ogystal, bydd arddangosfeydd ymgynghori mewn canolfannau ger Coedwig Clocaenog. Rydym yn anfon y cylchlythyr cymunedol hwn i bob cartref o fewn 5km o ffin Fferm Wynt Coedwig Clocaenog a wardiau lleol. Rydym hefyd yn cyhoeddi datganiadau i'r wasg ac yn rhoi hysbysebion ffurfiol yn y wasg. Yn ystod y cyfnod ymgynghori, rŷn ni'n awyddus i glywed barn pobl leol fel y gallwn greu'r cynllun gorau posibl. Byddwn yn sicrhau bod yr holl ymatebion yn cael eu cofnodi, eu hadolygu, eu hateb ac, yn olaf, eu cynnwys mewn Adroddiad ar yr Ymgynghoriad a gyflwynir gyda'r cais am Ganiatâd Datblygu.

Os hoffech gael y cylchlythyr hwn mewn print bras mae croeso i chi gysylltu â ni:  
01639 816180

Mae'r cylchlythyr hwn wedi'i argraffu ar bapur a wnaed o fwydion FSC ac fe'i argraffwyd gan ddefnyddio inciau llysiâu.

## Cysylltu â ni

Os oes gennych ryw gwestiwn am y cynllun, byddai'n bleser gan aelodau o dîm y prosiect gyfarfod â chi yn un o'r arddangosfeydd cyhoeddus.

Fodd bynnag, os na allwch ddod yno, mae croeso i chi gysylltu â'r tîm.

### E-bost

clocaenog@npower-renewables.com

### Ffôn

01639 816180

### Y we

Rydym yn diweddarau ein gwefan yn rheolaidd: [www.npower-renewables.com/clocaenogforest](http://www.npower-renewables.com/clocaenogforest)



### Trwy'r post

Ymgynghoriad Coedwig Clocaenog, RWE npower renewables, Uned 22, Baglan Bay Innovation Centre, Baglan Energy Park, Central Avenue, Baglan, Port Talbot, Gorselewin Morgannwg SA12 7AX