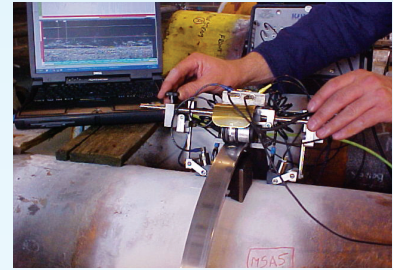


Steam pipework



Steam pipework inspections assist management in determining the condition assessment and integrity activities necessary for safe and commercial operation. Inspection techniques for high-risk steam pipework, welds and associated components should play a critical role in managing pipework integrity.

Product

RWE has expert knowledge of all aspects of Steam Pipework Inspections and can provide capabilities and experience at a level to ensure equality with national/international experts. We provide access to a comprehensive range of capabilities including:

- critical monitoring of induced by service flaws using advanced NDE methods
- information processing and collation using our proprietary databases
- specific inspection techniques for a range of challenging materials and geometries
- identification of weld locations using Pipework Inspection crawlers
- management of inspection personnel during plant overhauls.

Benefits

- the availability of RWE's competency in the inspection of high-risk pipework components
- access to authoritative advice from RWE engineers expert in pipework integrity management
- provision of reliable and accurate measurements using the latest technology and methodologies
- provision of confidence in NDE results on which to base engineering assessment of remnant life
- identification of service degradation and help in avoiding premature failure of high-risk pipework components
- low cost identification of weld locations without delagging.