

# OFFSHORE WINDFARM THORNTON BANK

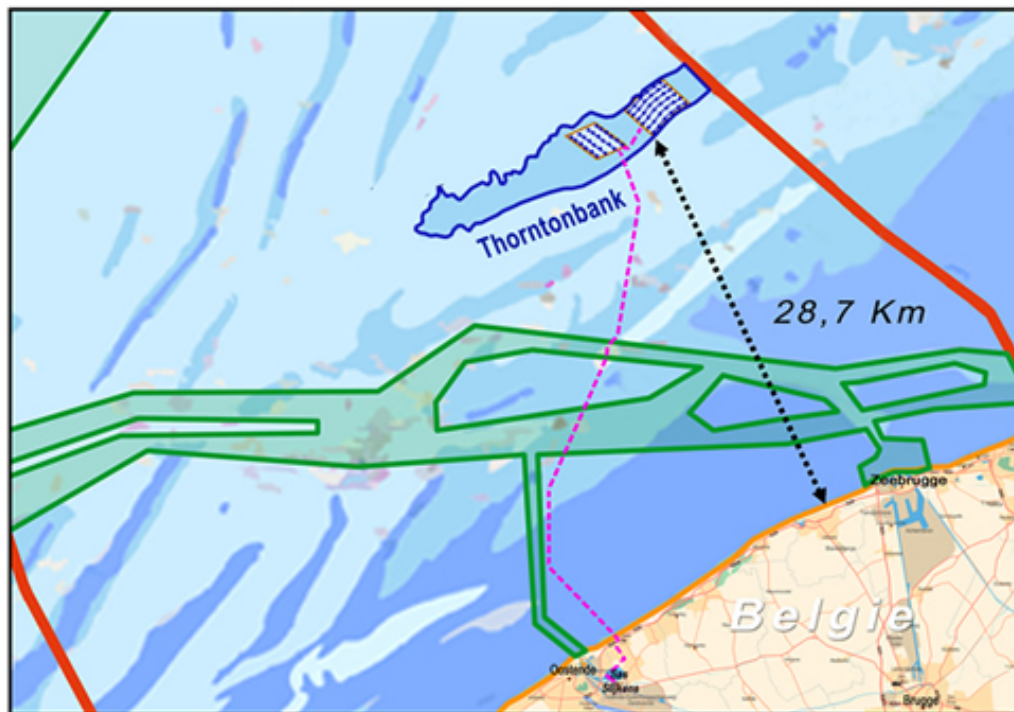
RWE goes offshore in  
Continental Europe

April 2009

**RWE**  
The energy to lead



# Thornton Bank: Technical details



## Location

- > 28km from Belgian coast in ~20m water depth.
- > Service port: Oostende

## REpower 5M turbines

- > 94m hub height, 126m diameter rotor.
- > Market-leading warranty package.

## Gravity Base Foundations

- > Concrete bases, constructed on land, floated to sea and filled with sand to secure.

# Strategic rationale for investment: An opportunity to learn in a low-risk way the use of 5MW technology



## Early experience of key technologies

- > REpower 5M
- > Gravity base foundations
- > North Sea location

## Strategic investment

- > Well-advanced project.
- > RWE's first continental offshore wind farm, and the first for any German utility.
- > Excellent strategic fit with other sites in NW Europe allowing us to build strong operations base.