



Introducing Revised Plans for Mynydd y Gwair Wind Farm

Following a break from initial consultations held in 2005 npower renewables would like to introduce revised plans for a wind farm at Mynydd y Gwair.

The proposed Mynydd y Gwair Wind Farm would be situated approximately 15 kilometres (9 miles) north of Swansea, South Wales and is within the administrative boundary of The City and County of Swansea. It comprises approximately 472 hectares of grazed moor land owned by the Somerset Trust.

The majority of Mynydd y Gwair lies within one of the areas (Area E) identified by the Welsh Assembly Government in its draft Technical Advice Note 8 (TAN 8), considered most suitable at a strategic level for large-scale wind farms.

Natasha Bacon, the developer of the revised scheme said "We appreciate there has been a break between our initial consultations and being ready to present the revised scheme to the public.

Since work on the project began technology has continued to advance, meaning a number of new options are now available to us. The development of more powerful turbines means we have been able to reduce the number of turbines in the original plans from 34 to a maximum of 19, without compromising the amount of electricity the site will generate.

Following on from the feedback we received from local communities during the consultation process we have made changes which we believe are a positive step. We hope that the revised proposal will be recognised as having the potential to make a valuable contribution to the Welsh Assembly Governments renewable energy targets."

The revised scheme at a glance

Mynydd y Gwair Wind Farm	Original scheme	Revised scheme
Number of turbines	Up to 34	Up to 19
Max tip height of turbines	112 metres	127 metres
Installed capacity of project	51 - 68 megawatts	38 - 57 megawatts
Development area	Around 650 hectares	Around 472 hectares

The revised scheme

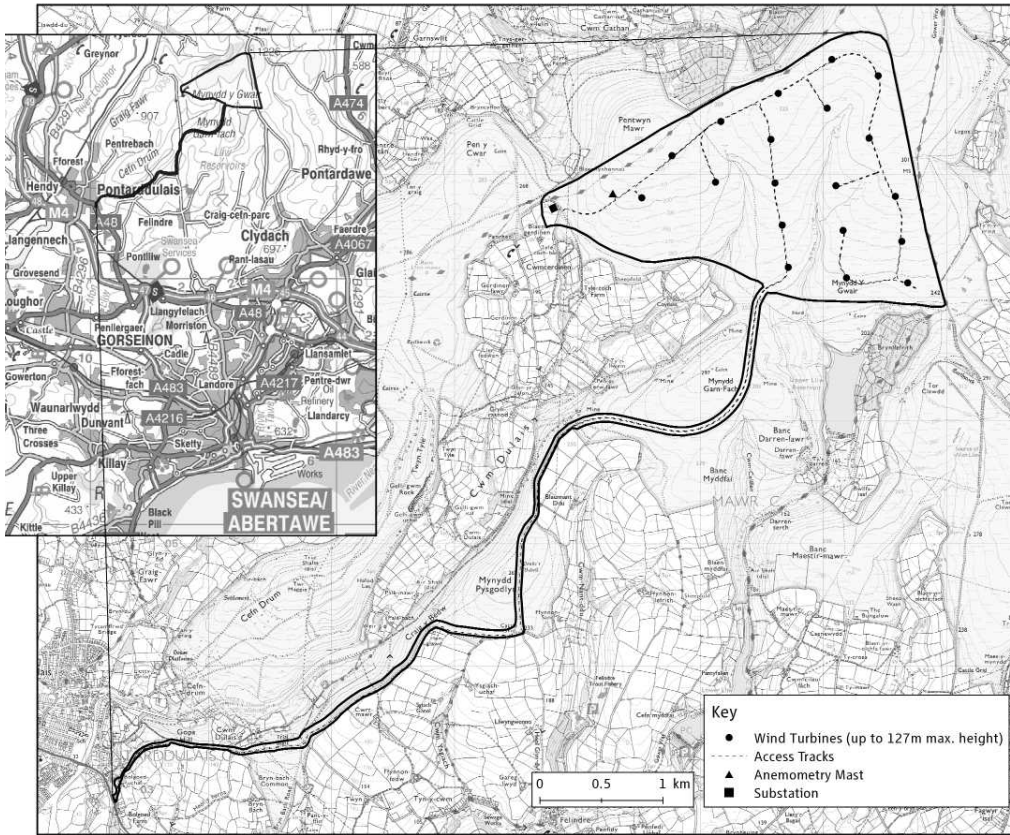
The exact details of the Mynydd y Gwair Wind Farm proposal will not be finalised until the Environmental Impact Assessment (EIA) of the site and the relevant consultations have been completed. The EIA involves studying the site in great detail, looking at issues such as landscape and visual effects, noise, nature conservation and cultural heritage.

The results of the environmental assessment will be presented in the form of an Environmental Statement submitted along with the planning application. Both of these documents will be made available to the public at the time of submission.

The proposal, as currently envisaged, will comprise around 19 turbines. each with a

capacity of between 2 and 3 megawatts, and measuring up to a height of 127 metres to the tip of the highest blade. This would mean that the wind farm would have a total installed electrical capacity of between 38 and 57 megawatts.

Taking into account periods of low winds, very high winds and time for maintenance work, the Mynydd y Gwair Wind Farm would generate enough clean electricity each year to supply the average needs of about 28,000 homes¹. This clean electricity would make a significant contribution towards the amount of renewable energy generated in South Wales, providing at best around 60% of the capacity identified for TAN 8 Area E.



What happens next?

We intend to submit a planning application and Environmental Statement to The City and County of Swansea Council (CCSC) in the summer of 2008. The Environmental Statement will be rigorously assessed by Planning Officers at CCSC and the statutory consultees including the Countryside Council for Wales (CCW). At this time there will be an opportunity for everyone to let their views be known to CCSC through the Council's public consultation.

The application and Environmental Statement will be public documents and CCSC will make them available at their offices and other public venues.

Further to a recommendation from Planning Officers the decision as to whether or not CCSC grant planning permission for Mynydd y Gwair will be taken by elected councillors who sit on the planning committee.

Have your say and useful links

Have Your Say:

You can make comments by e-mailing: mynyddygwair@npower-renewables.com

Or writing to:

Natasha Bacon, Unit 22,
Technium Sustainable Technologies,
Central Avenue,
Baglan Energy Park,
Port Talbot, SA12 7AX

Useful Links:

The British Wind Energy Association:
www.bwea.com

For the more technical aspects of wind energy: www.windpower.org

For scheme information: www.npower-renewables.com/mynyddygwair

For information on TAN 8:
<http://new.wales.gov.uk/topics/planning/policy/tans/tan8/?lang=en>

Note:

¹. Energy predicted to be generated by the proposal is derived using wind speeds monitored in the local area and applying trends from npower renewables' existing wind farm portfolio located across the UK. This enables a calculation to be made to estimate the average annual energy production based on 19 turbines each of rated capacity 2.5MW. The energy capture predicted and hence derived homes equivalent or emissions savings figures may change as further information is gathered.

Equivalent homes supplied is based on an annual electricity consumption per home of 4700 kWh, which is derived from a total UK domestic electricity consumption of 117.589 terawatt-hours (TWh) (The Digest of UK Energy Statistics 2005) and 25.2 million UK households (Mid-year Household Estimates published in 2004 by the Office for National Statistics).