



**Community Benefits Fund**

If we are successful in gaining planning consent, RWE npower renewables intends to offer a benefits package designed to specifically meet the needs of the local community.

RWE npower renewables has a long track record in delivering benefits for the communities in which it operates and we look forward to exploring what the local priorities might be for residents and organisations in close proximity to the Clocaenog Forest.

We want to know what you think these local priorities are.

1. What is most important to you about where you live?
2. Which organisations do you think make a positive difference to your community?
3. If you could do one thing to make the community you live in better what would it be?

We would also like to hear from you if you have any ideas for projects, activities or organisations that a community benefit package at Clocaenog Forest could support.

For more information or to submit your ideas, please contact our Community Investment Officer, Katy Woodington, on 01492 660811 or [katy.woodington@rwe.com](mailto:katy.woodington@rwe.com).

**What Happens Next?**

RWE npower renewables is undertaking these public exhibitions to understand the opinions and issues of local people and communities, before completing our proposals.

We are in the process of compiling our information into an Environmental Statement that will be submitted as part of our next step, a planning application to the Department of Energy and Climate Change.

We intend to regularly communicate the progress of this proposal locally, through various means including our website and newsletter, Wind Power News.

For further information or to submit your comments, please contact:

**Martin Cole**  
Clocaenog Forest Wind Farm Project, RWE npower renewables, Unit 22, Technium Sustainable Technologies, Central Avenue, Baglan Energy Park Port Talbot SA12 7AX

Telephone: 01639 816 180  
Email: [clocaenog@npower-renewables.com](mailto:clocaenog@npower-renewables.com)

[www.npower-renewables.com/clocaenogforest](http://www.npower-renewables.com/clocaenogforest)

This booklet is printed on paper which is made from FSC certified pulp and has been printed using vegetable inks.



**Footnotes:**

<sup>1</sup> These predictions are specific to the site of RWE npower renewables' proposed Clocaenog Forest Wind Farm as outlined in this leaflet.

<sup>2</sup> Energy predicted to be generated by the proposal is derived using wind speeds monitored in the local area and correlating to a Met.

Office station providing longer term data. This enables a calculation to be made to estimate the average annual energy production for the site based on 32 turbines each of rated capacity 2.5MW. The energy capture predicted and hence derived homes equivalent figures may change as further data are gathered. Equivalent homes supplied is based

on an annual electricity consumption per home of 4700kWh, which is derived from a total UK domestic electricity consumption of 117.589 terawatt-hours (TWh) (The Digest of UK Energy Statistics 2005) and 25.2 million UK households (Mid-year Household Estimates published in 2004 by the Office for National Statistics).

Photographs of existing operational wind farms within this newsletter are not intended to represent the appearance, size or scale of the proposed Clocaenog Forest Wind Farm (Images show Ffynnon Oer Wind Farm – 2 megawatt turbines, 58 metre tower, 70 metre rotor diameter.)

# Clocaenog Forest Wind Farm Proposal

Public Exhibitions, October 2009  
Summary Leaflet



Thank you for your interest in the Clocaenog Forest Wind Farm proposal. RWE npower renewables is keen to establish a constructive dialogue with the local communities in and around the site of the proposed wind farm.

This leaflet is a summary of the community consultation exhibitions held in October 2009. If you would like any further information please do get in touch using the contact details given on the back page, or visit our project website: [www.npower-renewables.com/clocaenogforest](http://www.npower-renewables.com/clocaenogforest)

*Martin Cole*

Martin Cole  
Project Manager

### Background

In March 2008, RWE npower renewables' Welsh development team was selected as the preferred bidder to potentially develop a wind farm on land owned by the Welsh Assembly Government and managed by Forestry Commission Wales, at Clocaenog Forest. This site is within an area deemed to be suitable for wind farms in the Welsh Assembly Government's Technical Advice Note 8 planning guidance.

### Project Details

- total installed capacity of wind farm: between 64MW and 96MW<sup>1</sup>
- tip height - up to 145m
- installed capacity of each turbine: between 2MW and 3MW per turbine<sup>1</sup>
- capable of providing the equivalent energy needs of up to 42,100 homes<sup>2</sup>
- area covered by potential development area boundary - around 1,463 hectares
- total area of Clocaenog Forest - 5,000 hectares.

### The Environmental Statement

Following consultation with a range of statutory and non-statutory consultees, the Clocaenog Forest Wind Farm Environmental Statement will cover the subjects listed below. Each subject has been assessed by a specialist and the Environmental Statement will set out the existing status, how and to what extent it may be affected by the construction and operation of a wind farm, and how any impacts could be mitigated.

- landscape and visual
- ecology and nature conservation
- planning
- cultural heritage and archaeology
- land use and forestry
- public access
- geology and hydrology
- noise and vibration
- traffic and transport
- infrastructure, telecommunications and aviation
- socio-economics.

### Environmental Impact Assessment

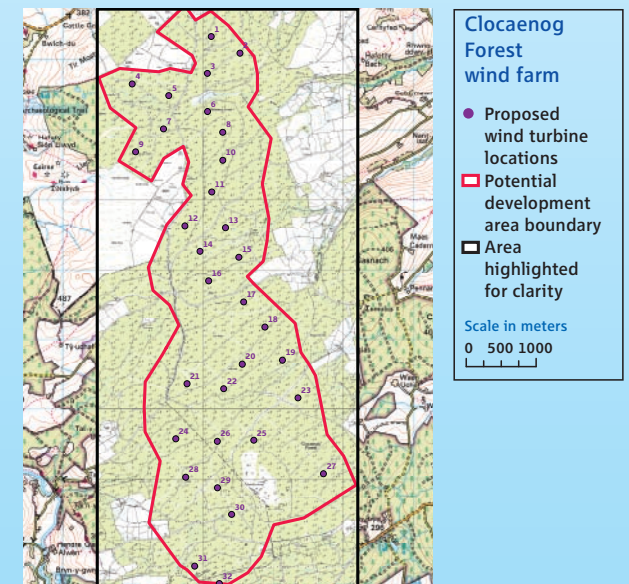
Detailed environmental surveys have been undertaken over the past year and a half to ensure that the wind farm can be designed sensitively and that the impact assessment is carried out with a comprehensive understanding of the site. This will limit disturbance to wildlife and the environment as far as possible.

A full review of existing data relating to the site has also been carried out. Any possible impacts, proposed mitigation measures and proposed biodiversity enhancements will be outlined in detail in the Environmental Statement that will be included as part of the planning application. This will be a public document, available for viewing in various locations throughout Conwy and Denbighshire.

### Layout and Design Process

The design and layout of a wind farm evolves as the project, technical assessments and consultations progress. The final location of the turbines is determined by many factors that include wind resource, visual impact, noise impact, proximity to surface water and proximity to areas of

ecological interest. Some of these factors are not identified until the technical assessments have been started or in some cases completed. This means that the layout you see below, as presented in the exhibition, may not be the final layout that is submitted with the application for planning permission.



Reproduced by permission of Ordnance Survey on behalf of HMSO. © Crown copyright and database right (2004). All rights reserved. Ordnance Survey licence number 100018338 and 100017907.