



Photomontage of proposed Rowantree Wind Farm from B6362 Lauder to Stow Road*

Rowantree Wind Farm update

RWE npower renewables, one of the UK's most experienced wind developers and operators, has submitted a planning application to Scottish Ministers for a wind farm near Oxton in the Scottish Borders.

The proposed Rowantree Wind Farm site is in Scottish Borders Council preferred area of search for wind energy developments. The site will allow for minimal environmental effects but still provide high energy output.

Consultation with members of the public, community councils and organisations including Scottish Borders Council, Scottish Natural Heritage, Scottish Environment Protection Agency and Historic Scotland has helped to shape the design and development of the proposed wind farm. And with results obtained from a wide range

of studies and feedback from public and statutory consultees the design for the site has now been reduced from 30 to 23 turbines with a maximum height to blade tip of 125 metres.

The project will therefore have a maximum total capacity of approximately 69 megawatts (MW), producing enough green electricity to meet the average annual electricity demand of up to 38,500 homes¹. This takes into account the times when the wind farm will not be generating, such as periods of low or no wind speeds.

View the planning application

A copy of the planning application together with copies of the Environmental Statement, Planning Statement and Community Consultation Report is available to view, during normal office hours, at:

Scottish Borders Council HQ
Newtown St Boswells, Melrose, TD6 0SA

Galashiels Library
Lawyers Brae, Galashiels, TD1 3JQ

The Environmental Statement can also be viewed at:

The Scottish Government Library
Saughton House, Broomhouse Drive,
Edinburgh, EH11 3XD

Copies of the ES may be obtained from RWE npower renewables (telephone 01738 825116) at a charge of £250 for a hard copy or £50 for a CD ROM. Copies of a short non-technical summary are available free of charge and are on our website at www.npower-renewables.com

Comment on the planning application

Under Section 36 of the Electricity Act 1989, any proposal to construct, extend or operate an onshore wind farm with a generation capacity in excess of 50 MW requires the consent of Scottish Ministers. RWE npower renewables submitted the planning application to Ministers on the 31 December 2009.

You can formally comment on the Rowantree Wind Farm planning application during the 28 day public consultation period – from the 22 February to 22 March 2010.

Whilst you may have already submitted comments to RWE npower renewables **this is the only opportunity you have to formally comment on the actual planning application.**

Further information about how to submit your comments can be found on the back page.

Facts and figures

The site statistics of the proposed wind farm have changed since the first Rowantree newsletter was issued in June 2009. As a direct result of feedback from environmental studies, local community and statutory consultees we have now reduced the proposed number of turbines from 30 to 23.

Location: South west of Oxton, Scottish Borders
Site area: 8km²
No. of turbines: up to 23
Tip height: up to 125m
Maximum capacity: 2-3 MW per turbine (maximum total capacity 69 MW)
Homes supplied¹: 38,500



Photomontage of proposed Rowantree Wind Farm from Fountainhall*

Keeping you informed

RWE npower renewables outlined its commitment to keeping local people informed about the Rowantree proposal.

We wanted to give you the opportunity to have questions answered and ideas and suggestions addressed, before we completed the design of the wind farm and submitted the application for planning permission to Scottish Ministers. In 2009 we did this by:

- distributing an informative newsletter to local households within a 5km radius of the proposed site
- hosting public exhibitions in Stow, Fountainhall and Oxton
- carrying out a survey questionnaire to learn more about your views
- carrying out face to face interviews with residents
- meeting with Oxton, Channelkirk, Melrose, the Parish of Stow and Lauderdale Community Council representatives
- keeping our website updated with the latest Rowantree Wind Farm proposal news
- ensuring you have the right information to contact us directly.

Key milestones

Step 1: Scoping
2008 – 2009

Step 2: Environmental Impact Assessment
2009

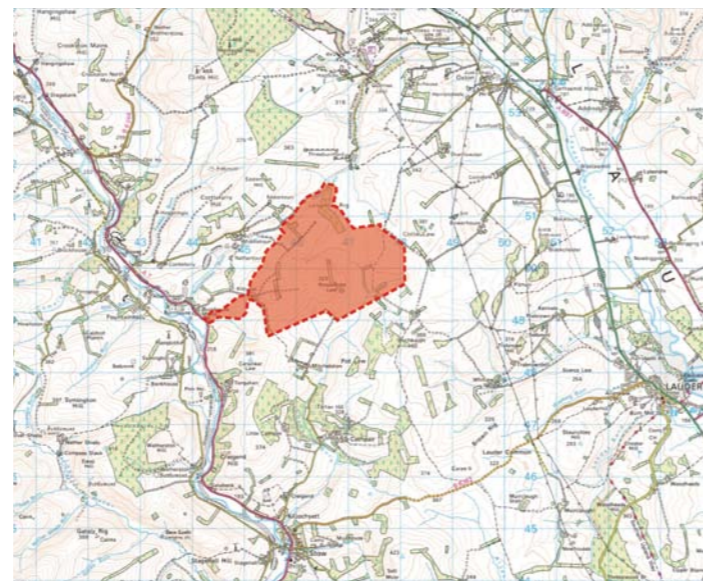
Step 3: Submission of Planning Application
December 2009

Step 4: Public consultation period
22 February – 22 March 2010

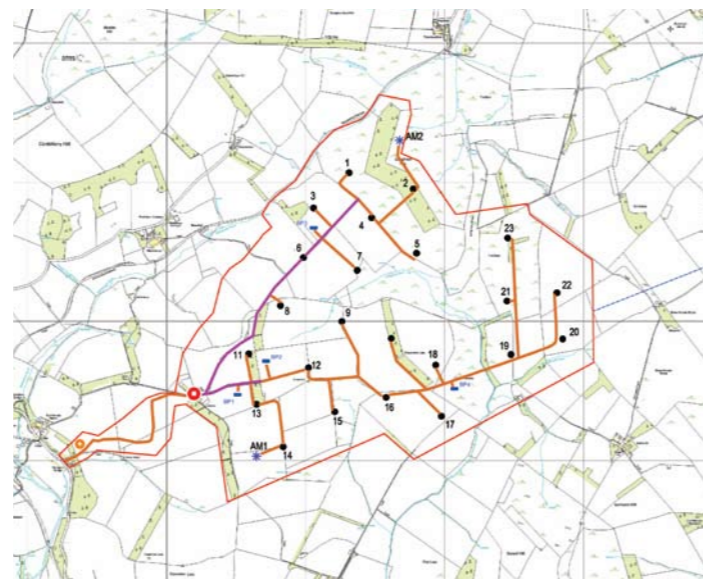
Step 5: Local authority consultation period
22 February – 21 June 2010

Step 6: Scottish Ministers decision
August 2010 (if no further information or public enquiry required)

Step 7: Construction period (if approved)
approximately 12 months



Rowantree Wind Farm site location map²



Rowantree Wind Farm revised site layout for a maximum of 23 turbines²

Your views

We have considered the views of statutory and community stakeholders through consultation and the many studies undertaken as part of Environmental Impact Assessment.

As described in Issue One of the Rowantree newsletter the Environmental Impact Assessment (EIA) is a process where information about the environmental effects of the project is collected, evaluated and taken into account in the wind farm design. Key themes that emerged from the EIA include:

Transport & access

There were strong local concerns regarding site traffic using the A68 and accessing the site through Oxton during the construction phase of the development. As a result, having looked at alternative options, we now propose to direct all transport to the site via a dedicated site entrance on the A7. This will ensure that no construction or operational traffic accesses the site via Oxton.

Landscape and visual

RWE npower renewables commissioned landscape architects to carry out a landscape and visual impact assessment. Part of this study included assessing the development from key viewpoints agreed

with SNH and Scottish Borders Council. The results of the viewpoint assessment have contributed to the design evolution of the Wind Farm which has seen the layout reduce from the initial 30 turbines down to the current 23. Our proposal also takes account of Scottish Natural Heritage best practice guidance.

Noise

Potential noise impacts of wind farms is a common concern amongst local communities and RWE npower renewables recognises this. If given consent, we will meet stringent industry and environmental health noise guidelines³ which will be monitored and enforced by the Council's Environmental Health Officers.

Archaeology

There are sites of historical and archaeological interest within and adjacent to the development site. The locations of these have been put on an environmental constraints map and the layout has evolved to avoid these areas.





Community benefits

As we reported in Issue One, if we are successful in gaining consent, RWE npower renewables intends to offer a community benefit package in association with Rowantree Wind Farm.

The total value of the package depends on the installed capacity of a wind farm. Normally it takes the form of an annual fund, which is available when the wind farm is operational and throughout its operational lifetime – in Rowantree’s case this could be approximately 25 years. We would consult with a wide cross section of community representatives before finalising the details of the package.

Community benefit packages are a voluntary benefit that RWE npower renewables chooses to offer and are not a material consideration of any planning decision.

If you would like this newsletter in larger print please contact us on:
01738 825132

Contact us

For further information about the project you can contact RWE npower renewables on:

E-mail

rowantree@npower-renewables.com

Post

RWE npower renewables
North Range East Lodge
Mill Road
Stanley Mills
Perthshire
PH1 4QE

Telephone

01738 825 110

Web

You can visit our website at:
www.npower-renewables.com

Comment formally

In order to formally submit your comments about the Rowantree Wind Farm planning application, you should complete the online representation form on The Scottish Government, Energy Consents website at:

www.scotland.gov.uk/Topics/Business-Industry/Energy/Energy-Consents/Support-object

Please clearly reference ‘Rowantree Wind Farm’ to ensure your comments are submitted for the correct application.

The closing date for comments from members of the public is 22 March 2010. The closing date for local authorities is 21 June 2010.

Footnotes:

¹It is estimated that the Rowantree Wind Farm will have a site capacity of 69 MW with a capacity factor of between 23% and 29%. This could be enough electricity to supply the average annual electricity needs of around 38,500 average UK homes. The energy capture predicted and hence derived homes equivalent may change as further data are gathered. Equivalent homes supplied is based on an annual electricity consumption per home of 4,700 kWh. This figure is supported by recent domestic electricity consumption data

available from The Digest of UK Energy Statistics and household estimates and projections from the UK Statistics Authority.

²Ordnance survey Crown Copyright. All rights reserved licence number 100017907.

³The assessment and rating of noise from wind farms’, ETSU-R-97, by the Working Group on Noise from Wind Turbines (Final Report, September 1996).

*Photomontages are computer generated illustrations that aim to represent an accurate image of the proposed site. These are not intended to replace photomontages within the Environmental Statement and are for illustrative purposes only.

This newsletter is printed on paper which has been bleached without chlorine and made exclusively of wood from sustainable forests.