

Triton Knoll Offshore Wind Farm

Proposals for Community Consultation

Section 47 of the Planning Act 2008

**Revision D
May 2011**

RWE Npower Renewables Ltd (RWE npower renewables)

1. Consultation Documents

This document is available to the public and consultees as a reference for anyone who wants to understand RWE npower renewables' consultation process for Triton Knoll Offshore Wind Farm in greater detail and how its extent and format has been determined.

This document previously comprised the 'Consultation Documents' under Sections 47(3) and 47(4) of the Planning Act 2008 (hereafter referred to as 'the Act') in relation to RWE npower renewables' duty to prepare a Statement of Community Consultation (SoCC) for the proposed Triton Knoll Offshore Wind Farm development.

A SoCC and accompanying Consultation Documents were previously published for the Triton Knoll Offshore Wind Farm in July 2010, which at that time included provision for associated development including the entire connection to Triton Knoll's national electricity grid connection. Those documents set out our proposals for consulting on both the offshore wind farm and the connection to the electricity network (comprising an onshore substation and both onshore and offshore electricity cables).

In December 2010, RWE npower renewables were notified by National Grid Electricity Transmission plc that they were undertaking a review of options for the onshore connection point to the electricity network which will require significant time for investigation and analysis. Triton Knoll Offshore Wind Farm will therefore be progressed as two separate packages:

- 1) The wind farm site itself and all elements within its boundary (representing a Nationally Significant Infrastructure Project (NSIP) under the definitions set out in the Planning Act 2008); and
- 2) The electrical system (both onshore and offshore).

A new SoCC and this accompanying Consultation Document have been prepared to relate only to the offshore wind farm application (item 1 above) and entirely supersede the previous SoCC and Consultation Documents which addressed both the wind farm and its associated development (items 1 and 2 above).

This is the final version of the document and has been revised to become a reference document, following review of the Consultation Documents. Since the Triton Knoll project is entirely located offshore, the content of this document was offered for comment to the Marine Management Organisation (MMO) and the relevant coastal local authorities (listed in Section 3.2). This is in line with guidance on the pre-application consultation process published by the Department for Communities and Local Government (DCLG)¹. The full SoCC which will be advertised locally, is included in Appendix A.

Separate consultation on the proposed wind farm development will take place with statutory stakeholders (under the provisions of Section 42 of the Act) but details of this are outside the scope of the SoCC and this document, which deal solely with consulting the local community within the terms of Section 47 of the Act.

¹ Department for Communities and Local Government, September 2009. Planning Act 2008: Guidance on pre-application consultation.

2. Triton Knoll Offshore Wind Farm - project overview

In 2003 the Crown Estate put Round 2 offshore wind farm development sites out to tender around the coast of Great Britain. RWE npower renewables put forward a successful Round 2 tender bid and were awarded the development rights to take forward a wind farm of up to 1,200 megawatts (MW) at Triton Knoll.

The Triton Knoll Offshore Wind Farm site is located approximately 33 kilometres (km) (20.5 miles²) off the coast of Lincolnshire, 46km (28.5 miles) from the coast of north Norfolk and 48km (30 miles) from the nearest point on the East Riding of Yorkshire coastline (see Appendix B). The wind farm site has evolved through the careful consideration of a wide range of constraints and issues acting upon the area including, for example, the wind resource, shipping patterns, helicopter routes, oil and gas platforms, ground conditions, water depth and commercial fishing activity.

Although RWE npower renewables has been awarded the rights to develop a wind farm of up to 1,200 MW, it is too early to say how many wind turbines will be installed if the proposal is given consent. Currently we are considering wind turbines which range in capacity from around 3.6MW to approximately 8MW and the maximum height of the turbines currently being considered would be in the region of 220m (from Lowest Astronomical Tide to maximum blade tip height). For the smallest capacity turbines, up to 333 would be required to produce the maximum 1,200 MW at Triton Knoll.

A level of flexibility in the final project design is vital since we are unable to predict the exact type of wind turbines and foundations that will be available in the market when we come to construct the wind farm, should consent be awarded. It is accepted practice for offshore wind farm developers to gain consent for a range of turbine sizes, assessing the 'worst case' in terms of impacts as part of the Environmental Impact Assessment (EIA) process.

Based on the maximum turbine heights being considered for Triton Knoll Offshore Wind Farm (i.e. around 220m), we have undertaken a Zone of Theoretical Visibility analysis to show (under the 'worst case' scenario) where the wind turbines might theoretically be visible around the coastline, including the Lincolnshire coast, north Norfolk coast and the southern portion of the East Riding of Yorkshire (Holderness) coast (see Appendix C).

Further detail on the proposed Triton Knoll Offshore Wind Farm will continue to be made available on the project website at: www.npower-renewables.com/tritonknoll.

2.1 Project details

As set out above, the Triton Knoll Offshore Wind Farm application is being progressed as two separate packages. This document relates only to the offshore wind farm application.

Within the offshore application comprising the Nationally Significant Infrastructure Project (NSIP) – that is an offshore wind farm which will generate more than 100 MW – will be all development needed for the operation of the offshore wind farm. This includes:

- up to 333 wind turbines;
- up to five meteorological monitoring masts;
- up to eight offshore electricity substations;
- buried, sub-sea electricity cables interconnecting the wind turbines and the offshore substations.

RWE npower renewables has employed independent consultants to carry out offshore environmental impact assessments and studies covering a range of topics including marine ecology, visual impact, cultural heritage, aviation, shipping and fisheries. The results of these studies will form part of the

² Measurements are in statute miles (i.e. land miles) not nautical miles

Environmental Statement which will be submitted to the Infrastructure Planning Commission (IPC) as part of our application for development consent for the offshore wind farm.

2.2 The consenting regime and policy context

Triton Knoll Offshore Wind Farm is a NSIP under the definitions set out in the Act. RWE npower renewables will make an application for a Development Consent Order (DCO) for the NSIP to the IPC under the provisions of the Act³.

The Act places a statutory duty on RWE npower renewables to undertake consultation with the local community and to consider the responses received when the application is being developed. For example, this may mean providing more information, discussing how effects could be reduced, designing appropriate mitigation or by amending the design of certain aspects of the project. It is important that the local communities get involved with the consultation and make their views known, so that issues can be considered and resolved where possible. Equally, the views expressed by the community at this stage may have an important part to play in how the IPC decides to determine the application.

The need for new generating capacity in the UK, including offshore wind farms and other renewables, and the development of new electricity grid infrastructure are determined by the policies set out by Government in the draft National Policy Statements (NPS) EN-1, EN-3 and EN-5. These policy statements also set out in generic terms the key considerations for the IPC when it considers applications in terms of key potential environmental and socio-economic effects.

The draft NPSs have been subject to a second round of consultation which ended on 24th January 2011 and are currently being finalised by the Government. Applications for NSIPs under the Act can proceed in the absence of a finalised NPS, but the IPC then only has the role of examination and recommendation and the final decision will be made by the Secretary of State.

There are proposed revisions to the IPC process which are set out under the Localism Bill 2010/2011. The Bill will abolish the IPC and replace it with a Major Infrastructure Planning Unit which will sit within the Planning Inspectorate. Whilst it is expected that many of the key principles of the current process will remain under the new system, the final decision on major infrastructure applications will be made not by the IPC or the Major Infrastructure Planning Unit but by the relevant Secretary of State.

³ Further information on the Planning Act and the IPC including copies of relevant legislation and guidance is available from the IPC's website: <http://infrastructure.independent.gov.uk/>

3. Community consultation -

3.1 Consultation objectives

The objectives of the Triton Knoll Offshore Wind Farm community consultation are to:

- Provide an opportunity for the relevant local communities to put forward their ideas and have a role in developing proposals where they can have an influence.
- Provide information on an inclusive basis to all sections of the relevant communities.
- Create a process through which local communities can comment on the formal proposals.
- Inform community stakeholders about the following aspects of the Triton Knoll Offshore Wind Farm project in a clear and concise way:
 - the offshore wind farm and interconnecting array cables
 - the offshore substations
 - the offshore meteorological monitoring masts

The SoCC (in Appendix A) will be published in full and is a binding document that sets out how RWE npower renewables will consult with local communities.

The consultation responses received by RWE npower renewables will be collated and we will consider whether and how this feedback could influence any aspects of the offshore wind farm proposal before finalising an application for submission to the IPC.

RWE npower renewables is required by the provisions of the Act to show how we have considered responses to all of our formal consultations in a Consultation Report, which will be submitted as part of our application to the IPC.

3.2 Agreement of the SoCC and consultation process

Section 47 of the Act requires RWE npower renewables to undertake public consultation with people living and working in the 'vicinity' of the wind farm proposal. This will include relevant offshore and onshore communities.

The format and content of the SoCC shows how we propose to communicate with the various communities. Section 47(2) of the Act requires the applicant to consult on the content of the SoCC with each local authority within which the 'land' lies in relation to the proposed development. As the application to the IPC will be for an offshore NSIP with no onshore associated development, no 'land' is associated with the proposed offshore wind farm. Therefore RWE npower renewables has sought the views of the MMO about the consultation strategy for the offshore elements of the wind farm as well as the views of the appropriate coastal local authorities within whose areas the offshore wind turbines could potentially be visible. This is in line with guidance on the pre-application consultation process published by DCLG.

The authorities that have received the consultation documents regarding the Triton Knoll Offshore Wind Farm SoCC are listed below, along with a preliminary appraisal of the potential impact on communities within their boundaries (based on the worst case visual impact derived from a Zone of Theoretical Visibility (ZTV) analysis for an approximate 8MW turbine height) (Appendix C).

Authority	Potential impact
East Lindsey District Council Lincolnshire County Council East Riding of Yorkshire Council Kingston upon Hull City Council North Lincolnshire Council North East Lincolnshire Council Boston Borough Council King's Lynn and West Norfolk Borough Council North Norfolk District Council Norfolk County Council	<ul style="list-style-type: none"> • Visual impact of the offshore wind turbines • Potential impacts on sea users with their land base within the councils' areas (e.g. fishermen, recreational users etc)
Marine Management Organisation	<ul style="list-style-type: none"> • Potential impacts on the commercial fishing industry • Potential impacts on other sea users • Potential impacts arising from construction, operation or decommissioning of the offshore wind turbines on the environment • Potential impacts of cables beneath the sea • Potential impacts of the offshore substations and meteorological monitoring masts • Visual, and other, impacts of the offshore wind turbines

A key requirement of the pre-application guidance from the DCLG is for developers to establish the appropriate 'vicinity' for the consultation process and this is an important focus of this document. The level of consultation in each area is appropriate to the potential impacts of the scheme at those locations; the vicinity for consultation defined for the Triton Knoll Offshore Wind Farm community consultation is set out in Section 4.2 of this document.

3.3 Publishing the SoCC

Section 47(6) of the Act requires that:

Once the applicant has prepared the SoCC, the applicant must publish it –

- (a) *in a newspaper circulating in the vicinity of the land, and*
- (b) *in such other manner as may be prescribed.*

RWE npower renewables will publish the SoCC for Triton Knoll Offshore Wind Farm in the newspapers listed in the table below, in the form of a single public notice advertisement. The publications proposed are intended to capture the communities affected by the works associated with Triton Knoll Offshore Wind Farm.

The SoCC will also be available on RWE npower renewables' Triton Knoll web pages (www.npower-renewables.com/tritonknoll).

Publication	Distribution	Purpose
Skegness Standard	Includes the towns of Skegness, Louth, Alford and Spilsby	To ensure adequate coverage in Skegness area. To capture the areas for the visual impacts of the wind farm on the East Lindsey coast
East Coast Target	(Formerly the South Lincs Target series) To ensure adequate coverage in towns and villages along the coast from Boston up to Mablethorpe and inland across the Wolds	To capture the areas for the visual impacts of the wind farm on the East Lindsey coast
Grimsby Telegraph	Barton-upon-Humber, Cleethorpes, Grimsby, Immingham, Louth, Mablethorpe, Market Rasen, Scunthorpe and Skegness	To capture the coast south of the Humber, north of East Lindsey particularly around Grimsby where some offshore users are based. Note: Combined with East Coast Target covers the coastland inland from Barton-on-Humber to Boston.
Hull Daily Mail	Barton-upon-Humber, Beverley, Bridlington, Driffild, Filey, Flamborough, Goole, Hornsea, Howden, Hull, Market Weighton, Pocklington, Scarborough, Withernsea, York	To capture the southern extent of the East Riding of Yorkshire (Holderness) coast including around Bridlington where some offshore users are based. Note: Withernsea to Hull and inland to Beverley.
Eastern Daily Press	Attleborough, Beccles, Bungay, Bury St Edmunds, Cromer, Debenham, Dereham, Diss, Downham Market, Ely, Eye, Fakenham, Framlingham, Great Yarmouth, Halesworth, Harleston, Holbeach, Hunstanton, King's Lynn, Lakenheath, Leiston, Lowestoft, March, Mildenhall, Newmarket, North Walsham, Norwich, Saxmundham, Sheringham, Soham, Southwold, Stowmarket, Swaffham, Thetford, Walsham-le-Willows, Wells, Wickham Market, Wisbech, Wymondham	To capture the north Norfolk coast including ports such as Wells where offshore users are based. Note: King's Lynn, Hunstanton, Wells, Sheringham, Cromer to Great Yarmouth and inland to Norwich, Dereham and Swaffham.
Fairplay	UK and international shipping industry	To capture offshore users, notably those shipping interests that may use the Triton Knoll area.
Fishing News	Commercial fishing industry	To capture offshore users notably those commercial fishing interests that may use the Triton Knoll area.

4. Scope of the community consultation

4.1 Phases of consultation

Guidance from the DCLG on pre-application consultation requires that:

“consultation must happen at a sufficiently early stage to allow consultees a real opportunity to influence the proposals.”

It is proposed that the consultation and community engagement for the Triton Knoll Offshore Wind Farm project will be carried out in a single phase. This consultation will target those communities in the ‘vicinity’ of the offshore wind farm who may be directly or indirectly affected by the proposals. RWE npower renewables will also put in place mechanisms so that the wider community can contribute to the process, if they wish to. Details are given in Section 4.2.

4.2 Defining ‘the vicinity’ for consultees

Guidance from the DCLG on the pre-application consultation process states that:

“In most communities promoters will need to strike a balance between consulting those who are significantly affected by proposals (i.e. those identified in section 42 of the Act) and consulting a wider group of local people who will not be directly affected, but who will have a reasonable fear that they might be, or will have strong feelings about a project. This second category may include people who live in the proximity of the development, but not close enough to be physically affected by it, people who are likely to be affected by wider impacts of the development, or who are users of, or visitors to the area.”

The guidance also states that:

“We also recognise that, whilst consultation should be thorough and effective, there will be a variety of possible approaches to discharging the requirements, and that consultation will need to be proportionate.”

The following section identifies how we have decided on the ‘vicinity’ for our consultation, based on the potential impacts of the offshore wind farm.

4.2.1 Offshore and local communities

The offshore wind farm, offshore substations, met masts and subsea interconnecting electricity cables could give rise to a variety of impacts on the offshore community, examples of which include:

- Temporary, local disturbance and redistribution of parts of the sea bed during construction of the wind farm.
- The need to occasionally or permanently exclude movement of some users of the sea from the area around the wind turbines.
- Some people being able to see the wind farm construction work and similar impacts when the wind farm is taken down at the end of its life.
- Possible effects on marine plants and animals and their habitats.
- People being able to see the offshore wind farm out at sea, although it will be located a long way from shore.
- Local low frequency electro-magnetic fields along subsea cable routes between the turbines and offshore substations.
- Low levels of operational noise near to the offshore substations and the wind turbines.

- Extra sea traffic which will be required during construction, operation and maintenance and decommissioning.
- A positive contribution to reducing the amount of carbon dioxide emissions in the UK.
- A positive contribution to a secure energy supply for the UK.
- A positive contribution to the local and wider UK economy through the employment of people to work on the wind farm.

In addition to the offshore wind farm works which fall within the remit of this application, there will also be the Triton Knoll electrical system which will not be part of this Triton Knoll Offshore Wind Farm application to the IPC. In future, the Triton Knoll electrical system may qualify in whole or in part as a NSIP and therefore may be submitted as a separate application to the IPC or its successor. Alternatively, it will be submitted as applications to the relevant local planning authority and the Marine Management Organisation.

The majority of the impacts arising from the offshore construction, operation and decommissioning of the Triton Knoll Offshore Wind Farm will only affect users of the sea. The potential effects on coastal communities will be primarily limited to the possible visual impact of the offshore turbines and, to a lesser degree, the visual impact of construction or operational vessels.

We will undertake a tiered approach to consultation where those communities with the greatest interest in the wind farm area will be targeted directly. These communities will include users of the sea who have an interest in the areas affected by the project (for example, commercial fishermen, shipping, yachtsmen, other marine industries etc) and any groups and organisations that have been agreed with the MMO and the relevant coastal local authorities.

Consultation with those communities likely to be predominantly affected by the visual impact of the offshore wind turbines will be undertaken by more general communication methods, details of which are provided in Section 4.3.

A further list of 'non-statutory' consultees will also be consulted at this stage, details of which are included under Section 4.2.2.

4.2.2 Non-statutory consultees

Statutory consultees are defined under Section 42 of the Planning Act and will be consulted on a similar timescale to our community consultation process. These statutory bodies are not therefore considered as part of the SoCC.

Statutory consultation bodies are defined by the Act and supporting legislation and are also advised to applicants on a case by case basis by the IPC. The statutory bodies that have been identified by the IPC in relation to Triton Knoll Offshore wind Farm are set out in Appendix D. Following review of the Consultation Documents by the MMO and the coastal local authorities, an additional statutory consultee has been added to this list, which has been included in Appendix D.

In addition to the statutory consultees, there is an important group of non-statutory groups and bodies falling outside of the definitions set down in the Act which RWE npower renewables thinks could provide valuable input to the wind farm development process.

Appendix E.1 sets out a list of non-statutory groups and bodies that RWE npower renewables will consult. This has been developed as a consequence of consultation with the MMO and coastal local authorities as described above (in Section 3.2).

The DCLG pre-application guidance identifies that there may be 'technical consultees' who could provide useful input to the consultation process. It is important that these consultees are provided with sufficiently technical information to provide an appropriate response; however it is also important that non-technical groups have clear and straight forward information about the proposal.

During discussions on our previous SoCC, it was felt that RWE npower renewables were not in a position to determine which bodies or groups in Appendix E.1 should receive detailed technical information or a simplified version.

We therefore proposed to include all non-statutory groups and bodies in our Section 47 community consultation. They will therefore receive non-technical information, ensuring that all are in a position to obtain a basic understanding of our proposals. However it will be made clear how they can get more detailed information if they require it.

In addition to the list of non-statutory consultees listed in Appendix E.1, there are important groups of directly and indirectly affected users of the sea such as dredging and oil and gas companies, commercial fishing representative bodies and shipping interests, who also need to be consulted and in many cases have already been engaged by RWE npower renewables. These non-statutory consultees are included in Appendix E.2. We propose to provide those listed in Appendix E.2 with technical information on the proposed offshore wind farm as they are largely familiar with the scheme.

4.2.3 Hard-to-reach groups

The DCLG pre-application guidance states that it is important for developers to identify any hard-to-reach groups in the areas where consultation is occurring.

Following formal and informal consultation on the previous SoCC, it was identified that a key hard-to-reach group on the East Lindsey coastline was the significant proportion of the population who are elderly and who are unlikely to have access to the internet and may have relatively low mobility. For this reason we have included proposals for three public exhibition venues along the Lincolnshire coast. We will also lodge all our consultation documents in local libraries and distribute key documents to parish clerks.

In Norfolk in addition to the exhibition at Wells-next-the-Sea, as advised by Kings Lynn and West Norfolk Council, parish clerks will be utilised as a key means of distributing information to the local community.

We have also included in the advertisement a clear statement about how people can obtain a large print version of our SoCC.

During our previous consultation none of the respondents identified a major non-English speaking population in any district.

4.3 How we will consult

RWE npower renewables will invite communities and interested parties to view, discuss and comment on the development of our wind farm proposals using a variety of communication tools. We will endeavour to ensure that public consultation is effective so that members of the community understand the project and have the opportunity to express their views. We will provide clear and concise information about the project and its impacts throughout the pre-application consultation process, to enable constructive consultation to take place.

The following consultees will receive Triton Knoll Offshore Wind Farm newsletters by post and will also be able to obtain information via the other communication methods listed in Section 4.4:

- Users of the sea who have an interest in the areas affected by the project (for example commercial fishermen, shipping interests and yachtsmen) as set out in Appendix E.2.
- Groups and organisations relevant to the proposed wind farm which have been discussed with the relevant local authorities, as set out in Appendix E.1.
- Any individual or organisation that responded to the advertisement of the SoCC or responded to general media notifications concerning community consultations or any other means and have recorded their interest in engaging in consultation.

A key consultation activity will be the public exhibitions, details of which are given in Section 4.4.

All consultees, including those likely to be affected by the visual impact of the offshore wind turbines, will be made aware of the project via:

- Posters in local communities.
- Press releases issued to local media.
- The Triton Knoll Offshore Wind Farm web pages.
- Information provided to relevant local elected representatives.

The Triton Knoll Offshore Wind Farm web pages will be developed during the pre-application consultation process and a postal address and e-mail address will also be made available.

4.4 Communication tools

A range of communication tools will be used to disseminate information to consultees. These are:

- **Website** – www.npower-renewables.com/tritonknoll will be updated during the wind farm project development. The website will explain what we are consulting about, advertise the public exhibitions, include electronic copies of the newsletters and will have a facility to allow people to seek information and contact us on-line via an enquiry form.
- **Newsletters** – Triton Knoll Offshore Wind Farm newsletters will be sent by post to those communities most likely to be affected. The newsletters will also be made available to wider communities through a range of community outlets. Copies will also be available on request from RWE npower renewables and at www.npower-renewables.com/tritonknoll
- **Points of contact** – a dedicated Triton Knoll postal address and email address will be maintained.
- **Media** - press releases will be issued during the development process including details about the public exhibitions.
- **Public exhibitions** - open exhibitions will be held where people will be able to view details of the offshore wind farm proposal, talk to the project team and submit their comments. The

exhibitions will be held at publicly accessible locations. People will be informed about the venues and dates when the events are organised. This will be through a range of communication channels including via the Triton Knoll website and the media, posters in local communities and by direct communication.

Suitable venues for the exhibitions will be sought close to:

- Skegness and Mablethorpe (for East Lindsey).
 - Wells-next-the-sea (for north Norfolk).
 - Easington area on the Holderness coast.
 - Grimsby (for North East Lincolnshire coast).
- **Comments forms** - comments forms will be available for people to record views when they attend the public exhibitions. People can also complete the on-line form via the website at any time or send comments to the dedicated postal address.
 - **Elected representative engagement (including information for parish councils)** – RWE npower renewables will provide updates for local politicians about the offshore wind farm to ensure they have all of the relevant facts, the opportunity to comment on the project and can feed into the consultation process. Briefings may be arranged on request where appropriate.
 - **On-going liaison with marine users** - including general and issue-specific meetings, newsletters and direct contact with relevant individuals and organisations about the wind farm project.
 - **Lodging of documents in public** – RWE npower renewables is aware of the potential low mobility of a significant proportion of the population on the East Lindsey coastal fringe. As a result it may not be sufficient to place documents solely at local libraries or key council offices⁴. RWE npower renewables believes that parish councils are best placed to determine where their community members will be able to access information most readily. We therefore propose to provide parish clerks with a copy of key consultation documents including:
 - The published Statement of Community Consultation.
 - Newsletters issued to their local communities.
 - Any other relevant advertisements or notices about the wind farm proposal.Additional copies can be made available to parishes on request, although a fee may be charged to cover costs.

⁴ East Lindsey District Council has previously advised that these should include the council Access Points at Spilsby, Alford, Skegness, Mablethorpe and Horncastle Area Offices. East Riding of Yorkshire Council has previously advised that this should include the Withernsea and Beverley Customer Service Centres.

5. What we will do with the consultation

All consultation responses received will be recorded and considered. RWE npower renewables, and its project team, will carefully consider all issues raised during the pre-application consultation period.

Responses received outside of the consultation period will be accepted and considered wherever possible.

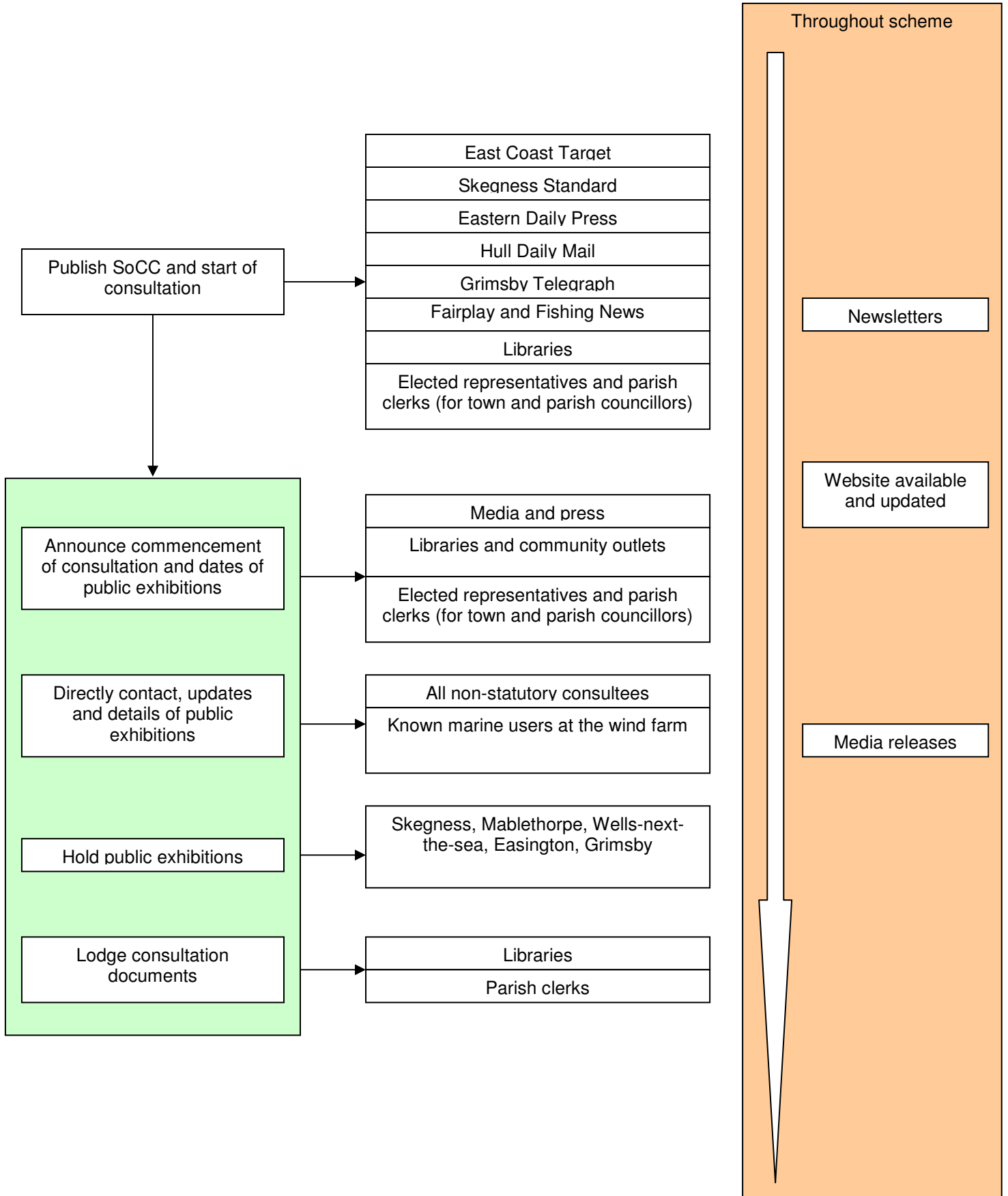
We will produce a Consultation Report which will form part of our Triton Knoll Offshore Wind Farm application to the IPC. This will explain how the views of consultees have been considered in developing the final application.

6. Consultation summary

During the pre-application consultation process and following the application to the IPC, the Triton Knoll website will be updated with relevant information as it becomes available. The dedicated contact methods (postal and e-mail) will be available throughout the pre-application and post-application periods. Liaising with local media, proactively sending out press releases and reactively responding to media enquiries will begin when the pre-application consultation period starts and continue during the consultation period and beyond. During the consultation period, liaison will be undertaken with those marine users who may be directly or indirectly affected by the proposed wind farm development.

The consultation will be carried out as summarised below and in the diagram overpage.

- Public exhibitions.
- Press releases about the wind farm.
- Elected representative engagement.
- Triton Knoll newsletters issued.
- Information and updates on the project website.
- Ongoing liaison with marine users.



7. Further information

For more information about RWE npower renewables or our plans for Triton Knoll Offshore Wind Farm you can contact us at.

Email: tritonknoll@npower-renewables.com

Web: www.npower-renewables/tritonknoll

Post: Triton Knoll Offshore Wind Farm
RWE Npower Renewables Ltd
Auckland House
Lydiard Fields
Great Western Way
Swindon SN5 8ZT

Appendix A - Statement of Community Consultation (SoCC)

RWE Npower Renewables Ltd

Statement of Community Consultation published in accordance with Section 47(6) of the Planning Act 2008

Triton Knoll Offshore Wind Farm

Introduction

RWE npower renewables is publishing this Statement of Community Consultation (SoCC) for the proposed Triton Knoll Offshore Wind Farm. This statement explains how we will consult with the local community including residents, businesses, organisations and users of the wind farm area.

In 2003, RWE npower renewables put forward a successful bid to The Crown Estate and were awarded the development rights to progress an offshore wind farm of up to 1,200 megawatts at Triton Knoll. The site is approximately 33 kilometres (km) (20.5 miles) off the coast of Lincolnshire, 46km (28.5 miles) off the coast of north Norfolk and 48km (29.8 miles) off the nearest point on the East Riding of Yorkshire coast.

A SoCC was previously published for the Triton Knoll Offshore Wind Farm in July 2010, which included the offshore wind farm and the electrical connection to the proposed national electricity grid connection point. This set out how we intended to consult on both the offshore wind farm and the electrical system (comprising an onshore substation and both onshore and offshore electricity cables).

In December 2010, RWE npower renewables were notified by National Grid Electricity Transmission plc that they were undertaking a review of options for the onshore connection point to the electricity network which will require significant further time for investigation and analysis. Triton Knoll Offshore Wind Farm will therefore be progressed as two separate packages:

- 1) The wind farm site itself and all elements within its boundary; and
- 2) The electrical system (both offshore and onshore).

This statement relates only to the offshore wind farm application (item 1 above) and supersedes the previous SoCC which addressed both the offshore wind farm and its associated development (items 1 and 2 above).

The wind farm application, covered by this SoCC, is likely to include:

- Up to 333 offshore wind turbines depending on the individual generating potential of each turbine, the largest turbine type being up to around 220 metres (722 feet) tall, measured from Lowest Astronomical Tide (LAT) to the tip of the highest point of the turbine blade;
- up to five offshore monitoring masts to collect information such as wind speeds and wind direction with a height of up to around 200m (657 feet) LAT;
- up to eight offshore electricity substations, and cables buried in the sea bed to link the wind turbines to the offshore substations.

The methods we will use to consult

The consultation will consist of:

Public exhibitions - exhibitions will be held so local people can find out more about the Triton Knoll Offshore Wind Farm proposal. RWE npower renewables staff will be at the exhibitions to answer questions that people may have. We will seek suitable venues for the exhibitions close to:

- Skegness and Mablethorpe for East Lindsey
- Grimsby, for the North East Lincolnshire coastline
- Easington area, for the East Riding of Yorkshire (Holderness) coast north of the Humber
- Wells-next-the-Sea, for the north Norfolk coastline

The locations listed above have been chosen because they are areas where the offshore wind turbines may be visible from the land.

Information about the exhibitions will be sent by post to:

- users of the sea who have an interest in the areas affected by the project (for example commercial fishermen, shipping and yachtsmen) that we have identified;
- parish councils and district councils and a range of community outlets to inform the wider community;
- a list of groups and organisations relevant to the proposed wind farm which have been discussed with the relevant local authorities.

Newsletters - we will issue newsletters at key stages of the project which will include information about the project, details of the public exhibitions, and contact details for RWE npower renewables. Newsletters will be issued by post to organisations and individuals identified as community stakeholders and others engaged in the consultation process. Newsletters will also be placed in key public outlets to reach the wider community.

Engagement with elected representatives and parishes - we will keep regionally and locally elected politicians informed of our proposals. We will also offer copies of documents to parish clerks so they can decide on the best locations to provide information to their community and inform them about events.

Liaison with marine users - we will continue consulting with users of the sea through meetings, newsletters and direct contact with individuals and organisations about the wind farm project.

Details about the consultation will also be made available on the Triton Knoll webpages and through press releases issued to the local media. Comment forms will be available at the exhibitions for people to give feedback.

Potential effects of Triton Knoll Offshore Wind Farm

We will provide information about the potential effects of Triton Knoll Offshore Wind Farm through the consultation we are carrying out. Below is a list of likely potential effects we anticipate:

- temporary, local disturbance and redistribution of parts of the sea bed during construction of the wind farm
- the need to occasionally or permanently exclude movement of some users of the sea from the area around the wind turbines
- some people being able to see the wind farm construction work and similar impacts when the wind farm is taken down at the end of its life
- possible effects on marine plants and animals and their habitats
- people being able to see the offshore wind farm out at sea, although it will be located a long way from shore
- local low frequency electro-magnetic fields along subsea cable routes between the turbines and offshore substations
- low levels of operational noise near to the offshore substations and the wind turbines
- extra sea traffic which will be required during construction, operation and maintenance and decommissioning
- a positive contribution to reducing the amount of carbon dioxide emissions in the UK

- a positive contribution to a secure energy supply for the UK
- a positive contribution to the local and wider UK economy through the employment of people to work on the wind farm.

Environmental Impact Assessment regulations

We intend to carry out an Environmental Impact Assessment (EIA) and submit an Environmental Statement (ES). Our Preliminary Environmental Information will be made public and will be available for people to see at local libraries and at the public exhibitions.

Infrastructure Planning Commission (IPC) consenting process

We will submit an application to build and operate the offshore wind farm to the IPC, under the Planning Act 2008. The IPC will examine our application and decide or recommend whether it should be approved. The IPC will consider the draft National Policy Statements (NPSs) for energy which set out the need for new energy infrastructure and the issues to be considered when determining our application. The draft Energy NPSs have been subject to a second round of consultation which ended on 24th January 2011 and are currently being finalised by Government. If the project is approved it will be granted a Development Consent Order.

We are required to consult with local communities before we submit our offshore wind farm application to the IPC. We are also required to produce a Consultation Report detailing how we have complied with the consultation requirements of the Planning Act. This document will be one of the factors taken into account by the IPC. It is important that you let us know if you have any comments or information about any part of Triton Knoll Offshore Wind Farm during our consultation process.

Other possible or expected IPC consultations

In future, the Triton Knoll electrical system (which does not form part of this application) may qualify in whole or in part as a Nationally Significant Infrastructure Project and may therefore be submitted to the IPC or its successor. It may also be the subject of applications to the relevant local planning authority and the Marine Management Organisation.

During the consultation period for Triton Knoll, there will likely be a number of other projects which will be actively consulting local communities. At the time of publication, the following NSIPs in the vicinity of Triton Knoll Offshore Wind Farm are in the pre-application stages, as registered on the IPC website:

- Forewind – Dogger Bank Offshore Wind Farm
- SMart Wind Ltd – Hornsea Offshore Wind Farm
- Scottish Power – East Anglia Offshore Windfarm
- Able UK Ltd – Able Marine Energy Park
- Highways Authority – A160 Highway Improvements – Immingham
- National Grid – King's Lynn B Connection Project
- Palm Paper Ltd – Palm Paper 3 CCGT Power Station King's Lynn

How to get in touch with us or obtain more detailed information

The comments and information we receive during the consultation will be carefully considered. We will show how we have considered the comments and information received in a Consultation Report which will be submitted with our application to the IPC. Therefore any comments received by RWE npower renewables may be made public and be submitted to the IPC.

Comments and information which we receive during the consultation need to reach us within 42 days of the start of the consultation period to guarantee that they will be considered. We will do our best to consider responses received outside this period wherever possible.

RWE npower renewables

A more detailed document, explaining how our consultation strategy was developed, is available on our website or by contacting us.

Post: Triton Knoll Offshore Wind Farm
RWE Npower Renewables Ltd
Auckland House
Lydiard Fields
Great Western Way
SWINDON SN5 8ZT

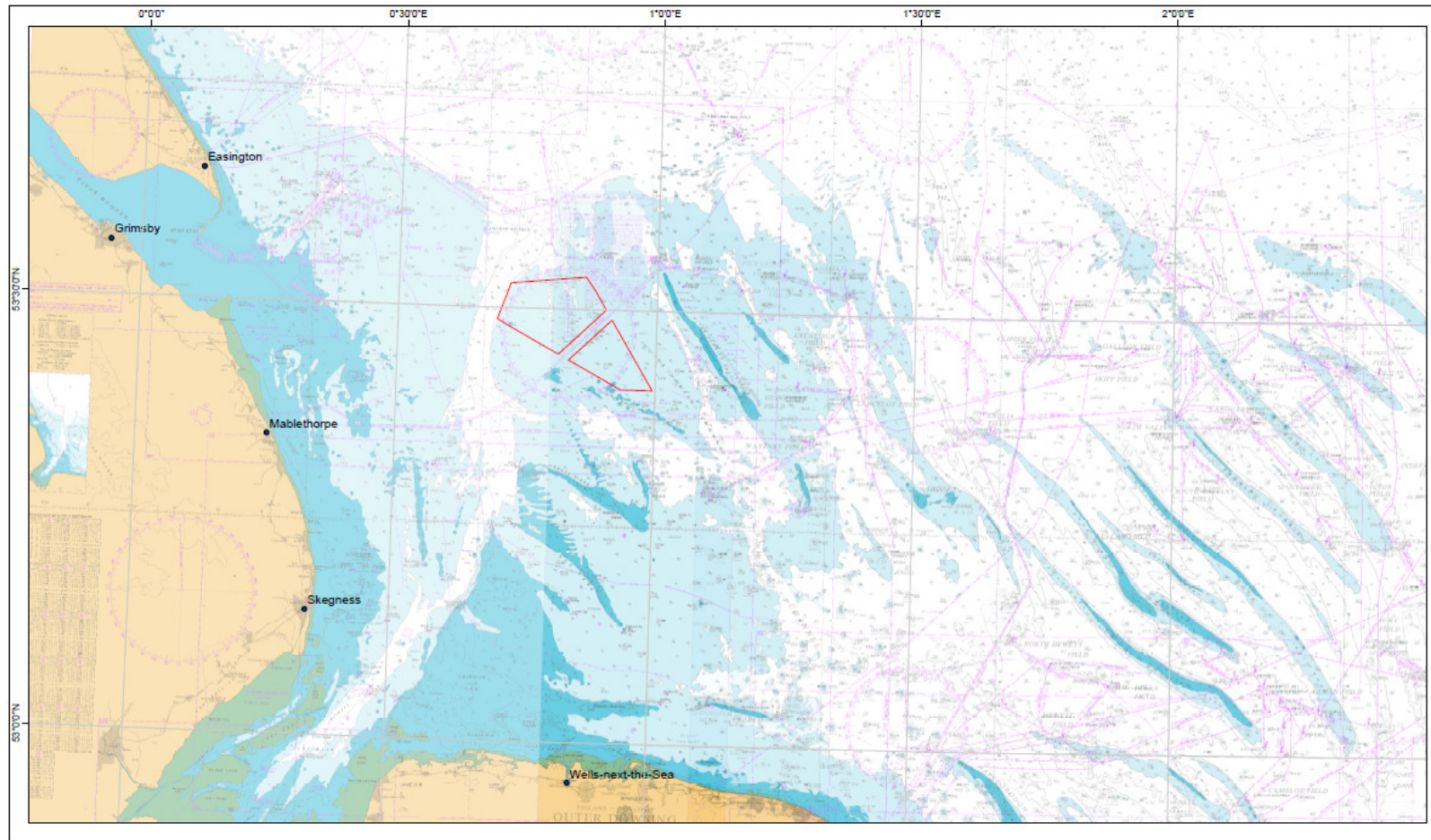
Email: tritonknoll@npower-renewables.com

Website: www.npower-renewables.com/tritonknoll

A large print version is available, please visit www.npower-renewables.com/tritonknoll or write to

**Triton Knoll Offshore Wind Farm
RWE Npower Renewables Ltd
Auckland House
Lydiard Fields
Great Western Way
SWINDON SN5 8ZT**

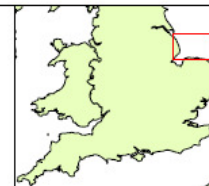
Appendix B – Offshore wind farm site location



**Triton Knoll
Site Location**

Legend

 TK project area



0 5 10 20 Km

Scale: 1:450,000@ A3



Date: 13/01/11
Map projection: UTM31N (WGS84 Datum)

RWE
npower renewables

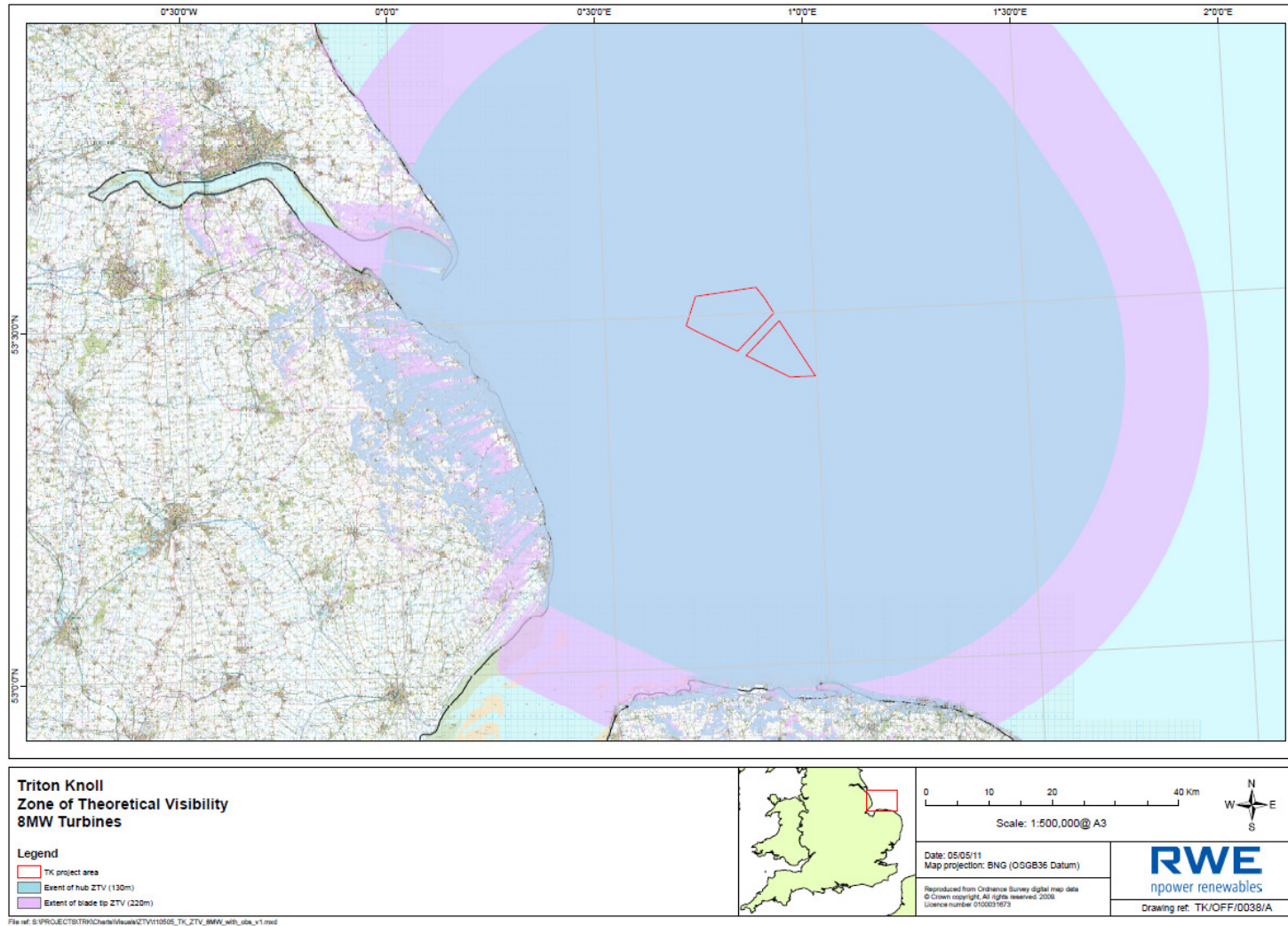
© British Crown and SeaZone Solutions Limited.
All rights reserved.
Data Licence 052003.002

Drawing ref: TK/OFF/0009/A

File ref: S:\PROJECTS\TRK\Charis\9\From Jan 11\110113_TK_Site_Location_v1.mxd

Appendix C - Indicative map showing wind turbine Zone of Theoretical Visibility (ZTV)

Map showing the best estimates of the 'worst case' ZTV of the offshore wind turbines at Triton Knoll, i.e. 150 no. 220 metre wind turbines to blade tip. This illustrates the location where the largest possible wind turbines being considered could potentially be seen from.



Appendix D List of prescribed bodies (Statutory consultees)

Bodies notified by the IPC⁵	
East Midlands Council	The Gas Transportation Company Limited Energy House
Health and Safety Executive	Utility Grid Installations Limited
NHS East Midlands	Wales and West Utilities Ltd
Natural England	WINGAS Storage UK Limited
English Heritage	
Lincolnshire Fire and Rescue Services	<u>Electricity Generators, Distributors and Generators with CPO Powers</u>
Lincolnshire Police Authority	RWE Npower Plc, Licence operator of The Hollies Wind Farm
The Environment Agency	ECG (Distribution) Limited
The Commission for Architecture and The Built Environment	EDF Energy (IDNO) Limited
East Midlands Regional Development Agency	Central Networks East Plc
Equality and Human Rights Commission	Energetics Electricity Limited
The Commission for Sustainable Development	ESP Electricity Limited
The Homes and Communities Agency	Independent Power Networks Limited
The Joint Nature Conservation Committee	The Electricity Network Company Limited
The Commission for Rural Communities	National Grid
The Maritime and Coastguard Agency	
The Marine Management Organisation	<u>Relevant Parish Councils and Relevant Community Councils</u>
The Marine and Fisheries Agency	Ashby With Scremby Parish Council
The Civil Aviation Authority	Skendleby Parish Council
The Highways Agency	Halton Hologate Parish Council
Lincolnshire County Council (Highways Authority)	Firsby Group Parish Council
The Rail Passengers Council	Candlesby with Gunby Parish Council
The Disabled Persons Transport Advisory Committee	Welton Le Marsh Parish Council
The Coal Authority	Thorpe St Peter Parish Council
The Office Of Rail Regulation	Burgh le Marsh Town Council
Network Rail Infrastructure Ltd	Orby Parish Council
Network Rail (CTRL) Ltd	Willoughby with Sloothby Parish Council & Claxby St Andrew
OFGEM	Hogsthorpe Parish Council
OFWAT	Cumberworth Parish Council
Lincolnshire County Council (Waste Regulation Authority)	Farlesthorpe Parish Council
Upper Witham Internal Drainage Board	Well Parish Council
Lindsey Marsh Drainage Board	Croft Parish Council
Witham Fourth District Internal Drainage Board	Addlethorpe Parish Council
Newark Area Internal Drainage Board	Chapel St Leonards Parish Council

⁵ Notified by the Infrastructure Planning Commission under Regulation 9(1)(a) of the Infrastructure Planning (Environmental Impact Assessment) Regulations 2009

The British Waterways Board	Mumby Parish Council
Trinity House	Skegness Town Council
The Health Protection Agency	Ingoldmells Parish Council
Lincolnshire Local Resilience forum	Wainfleet All Saints Parish Council
Lincolnshire Partnership Foundation Trust	Wainfleet St Mary Parish Council
United Lincolnshire Hospitals Trust	Anderby Parish Council
East Midlands Ambulance Service NHS Trust	
NHS Lincolnshire Primary Care Trust	<u>Local authorities (s43)</u>
BRB Residuary Limited	Lincolnshire County Council
NATS En Route plc	East Lindsey District Council
Royal Mail Group	Boston Council
Anglian Water	North East Lincolnshire Council
The Crown Estate Commissioners	West Lindsey Council
East Midlands Forestry Commission	North Lincolnshire Council
	Bassetlaw Council
<u>Public Gas Transporters</u>	Newark and Sherwood Council
British Gas Pipelines Limited	Rushcliffe Council
Orange	Nottinghamshire County Council
Energetics Electricity Limited	Melton Borough Council
Energetics Gas Limited	Leicestershire Council
ESP Pipelines Ltd	Rutland County Council
Fulcrum Pipelines Limited Fulcrum	Northamptonshire County Council
GTC Pipelines Limited Energy House	East Northamptonshire Council
Independent Pipelines Limited	Peterborough City Council
Intoto Utilities Limited	Fenland District Council
National Grid Gas Plc (NTS)	Borough Council of Kings Lynn and West Norfolk
National Grid Gas Plc (RDN)	Norfolk County Council
Northern Gas Networks Limited	Cambridgeshire County Council
Quadrant Pipelines Limited	South Holland District Council
Scotland Gas Networks Plc	South Kesteven Council
Southern Gas Networks Plc	North Kesteven District Council
SP Gas Limited	Lincoln City Council
SSE Pipelines Ltd	
Additional bodies identified through consultation with the MMO and coastal local authorities	
Ministry of Defence	

Appendix E List of non-statutory groups and bodies

E.1 Non-statutory consultation bodies proposed by RWE npower renewables for comment by the MMO and coastal local authorities

This comprises relevant national groups or bodies, coastal bodies and a focus on groups that may assist in disseminating communication amongst the hard-to-reach groups in East Lindsey (such as via Age Concern)

Age UK Lindsey	Lincolnshire Gypsy Liaison Group
Anglian Water Services	Lincolnshire Tourism
BBC Spectrum Planning Group	Lincolnshire Wildlife Trust
Boatshed Young Peoples Project	Mablethorpe and District Seniors Forum
British Geological Survey	Mablethorpe Chamber of Trade & Commerce
British Holiday & Home Parks Association	Mablethorpe Residents Association
British Resorts Association	Mablethorpe Tourism Forum
British Telecoms	Marine Conservation Society
British Trust for Ornithology	National Grid Wireless
Cable & Wireless plc	Norfolk Association of Local Councils
Campaign for the Protection of Rural England	Norfolk Department of Development
Central Networks	Norfolk Tourism
Centre for Ecology & Hydrology	Norfolk Wildlife Trust
Community Council of Lincolnshire	NTL Spectrum Planning Group
Country Land & Business Association	OFCOM
East Coast Kiting/Surf Club	Orange
East Midlands Tourism	Renewable Energy Foundation
East of England Energy Group	Renewables East
East of England Tourist Board	RSPB
Friends of The Earth	Skegness and District Council for Voluntary Service
Friends of the Riverhead	Skegness Chamber of Commerce
Gibraltar Point National Nature Reserve	Skegness and District Seniors Forum
Government Pipelines & Storage	Skegness East Coast and Wolds Hospitality Association
Greenpeace UK	T-Mobile (UK) Ltd
Heart of England Tourism	The Camping & Caravanning Club
Heritage Lincolnshire	The Caravan Club Limited
Joint Radio Company Ltd	The Skegness Society
Learning & Skills Council - Lincolnshire & Rutland	Virgin Mobile
Lincolnshire Area Ramblers Association	Visit Britain
Lincolnshire Association of Local Councils	Vodafone Ltd
Lincolnshire Development	Wash & North Norfolk Coast SAC
Lincolnshire Fieldpaths Association	Wash Estuary Project Manager
	WWF UK

E.2 Additional non-statutory consultation bodies to be provided with technical information on the proposed offshore wind farm

SHIPPING AND NAVIGATION	Torbuk
ABP Grimsby	UK Hydrographic Office
ABP Hull and Goole	Wharton Grove Wharf Ltd
ABP Humber	Yorkshire Shipping
ABP Kings Lynn	
ASP Ship Management Ltd	<u>RNLI</u>
Associated Petroleum Terminals (Immingham) Ltd	RNLI Divisional Base East
BG Freight Line BV	RNLI Divisional Base North
Boston Putfords Offshore Safety Ltd	<u>Recreation</u>
British Ports Association	British Sub Aqua Club
Casper Shipping	Grimsby & Cleethorpes Yacht Club
CB Shipping	National Association of Boat Angling Clubs
Chamber of Shipping	Angling Trust
DFDS Tor Line	Royal Yachting Association
Eimskip	Humber Mouth Yacht Club
Euroship Services Ltd as operator / manager of Cobelfret.	Royal Yorkshire Yacht Club
Fast Lines	Skegness Yacht Club
Flixborough Wharf Ltd	The Cruising Association
GB Holdings	Humber Cruising Association
Hartel shipping and chartering BV	
Hudig and Veder Chartering BV	OTHER MARINE INDUSTRIES
Hull & Humber Chamber of Commerce and Shipping	<u>Aggregates</u>
Hull and Humber Chamber of Shipping and Commerce	British Marine Aggregate Producers Association
Humber Area Dredging Association (HADA) (part of United Marine)	CEMEX UK Marine
King's Lynn Conservancy Board	Hanson Aggregates Marine Ltd
Minship UK Ltd	United Marine Aggregates Ltd
Mol Tankship Management-Europe (UK)	Westminster Gravels Ltd
Norfolk Line	
P&O Ferries	<u>Wind Farm Companies</u>
PD Port Services	Centrica Renewable Energy Ltd
Port of Boston	DONG Energy & Power
Port of Wisbech Harbour Authority	E.ON Climate & Renewables
Port of Wisbech Ltd	Scira Offshore Energy
Rederiet Nielsen and Bresling A/S	Statoil Hydro A/S
RMS Group Logistics Ltd.	Warwick Energy Ltd
Samskip	
Seacon Terminals Ltd	<u>Aviation</u>
Simon Group Ltd, Port of Sutton Bridge	Bristow Helicopters Ltd
Stena Line	CHC Scotia

FISHERIES	
Boston and District Fishermen's Association	King's Lynn Fishing Industry Co-operative Ltd
Brancaster Staithe Fishermen's Society	King's Lynn Fishing Vessel Owners & Skippers Association
Bridlington and Flamborough Fishermen's Society	Lincolnshire Coast Fishermen's Association
Eastern Sea Fisheries Joint Committee (or equivalent IFCA replacement)	National Federation of Fishermen's Organisations
Greater Wash Association	North Norfolk Business Forum (Fisheries Round Table)
Grimsby Fish Merchants Association	North Norfolk Coast Inshore Fishermen's Association & Wells and District Fishermen's Association
Grimsby Seiners Association	North Norfolk Shellfishermen's Association
Heiploeg & Lynn Shrimpers Inc	The Grimsby Fishing Vessel Owners Association
Hornsea and Withernsea District Fishermen's Association	Yorkshire/Humber Fishermen's Association & Companies
John Lake Shellfish	

<u>Oil and Gas Operators</u>	RMS
Amasus Shipping	Swanland Shipping Ltd
ARCO British Ltd	Union Transport
Arklow Shipping	Wagenborg Shipping
British Petroleum	Wilson EuroCarriers AS
Conoco Philips Ltd	
Frank Dahl Shipping	OTHER INTERESTS
Orion Shipping	Joint Nautical Archaeology Policy Committee
Perenco	Marinet
Rettig Group Ltd Bore	Norfolk Coast Partnership
	Norfolk Ornithologists' Association