

RWE



Annual General Meeting 2020 - 26 June 2020



*We live in very uncertain
times.*

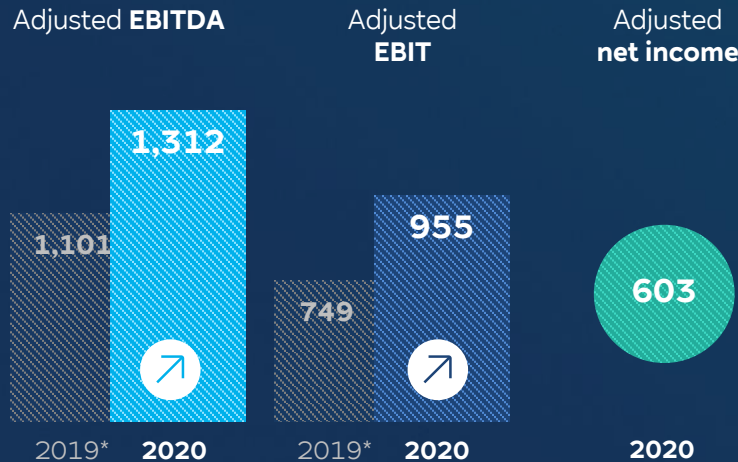
*But one thing is for certain:
our electricity.*

Rolf Martin Schmitz
CEO of RWE AG





Q1 2020 earnings



(€ million)

* Pro-forma key figures.

RWE got off to a good start to the year.

We have achieved a significant increase in earnings compared with the previous year.

Rolf Martin Schmitz
CEO of RWE AG



**Welcome
to the era of
renewables.**



Annual General Meeting 2020 - 26 June 2020

We are resolutely and responsibly phasing out the use of fossil fuel. We have a sharp focus on renewable energy.

***We will be carbon neutral
by 2040.***

Rolf Martin Schmitz
CEO of RWE AG





*We will make **5 billion euros** in net investments to expand renewable energy through to **2022**.*

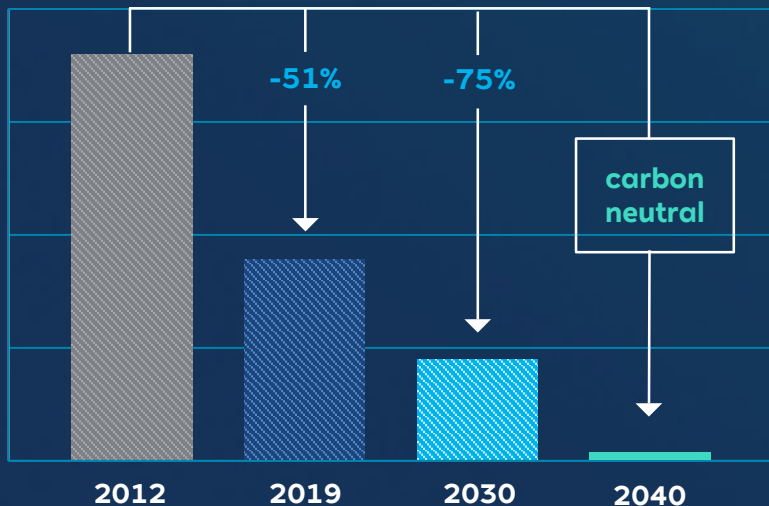
1 billion euros of this sum is envisaged for projects in Germany.

Rolf Martin Schmitz
CEO of RWE AG





Clear CO₂ reduction roadmap



*All systems go for
clean, reliable and
affordable electricity.*

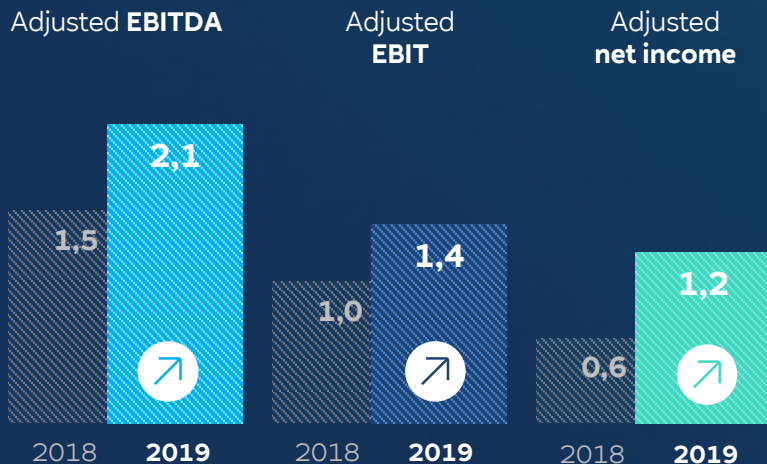
*This is our path.
This is your RWE.*

Rolf Martin Schmitz
CEO of RWE AG





2019 earnings*



(€ billion)

* RWE stand alone.

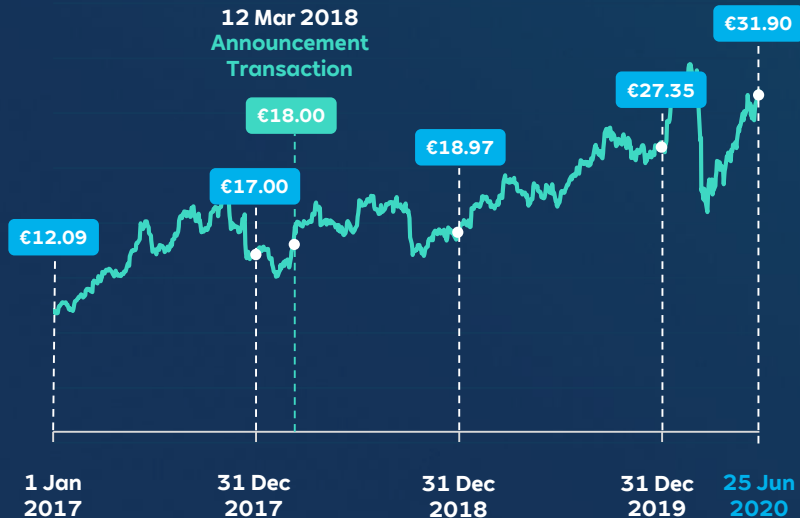
*We launched
the new RWE in 2019.
We made upward
adjustments to our
operating targets twice.
**And we actually ended
up exceeding them.***

Rolf Martin Schmitz
CEO of RWE AG





RWE share puts in a strong performance



Source: closing quotations on XETRA, dividend adjusted.

*Good news for
our shareholders:
RWE is increasing in value.*

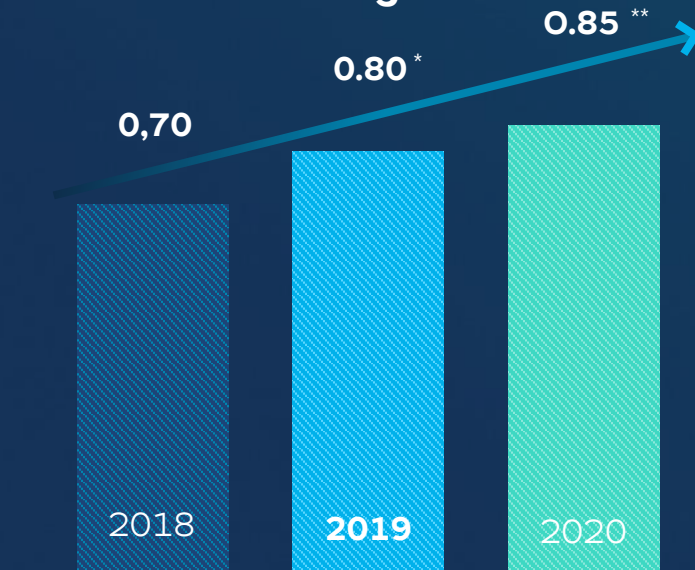
*The RWE share ranked
among the top 3 in the DAX
in 2017, 2018 and 2019.*

Rolf Martin Schmitz
CEO of RWE AG





Constant dividend growth



(€/per share)

* Proposal by the Executive Board and the Supervisory Board.

** Planned by the Executive Board.

*The Executive Board and the Supervisory Board propose a **dividend of 80 cents per share** for fiscal 2019.*

Rolf Martin Schmitz
CEO of RWE AG





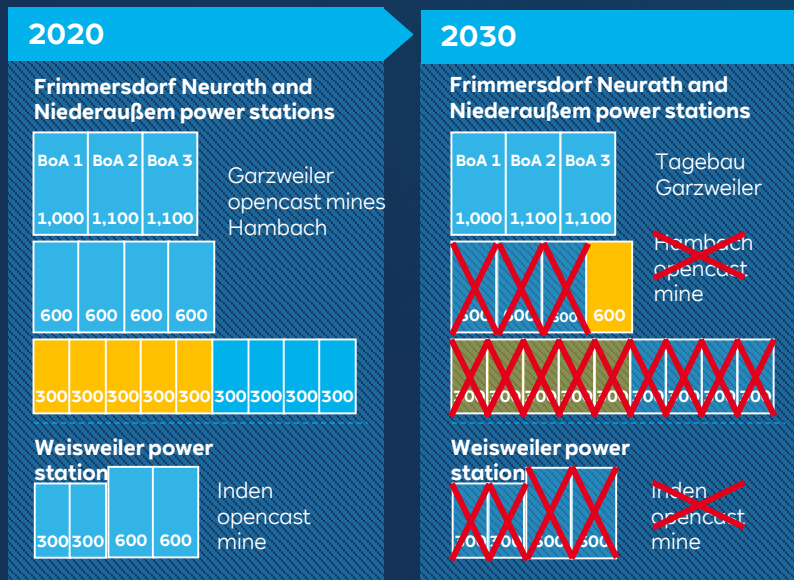
*Hydrogen, floating offshore, batteries:
RWE is already thoroughly
exploring the **technologies
of the future.***

Rolf Martin Schmitz
CEO of RWE AG





Decommissioning schedule for RWE lignite-fired power stations



RWE is **withdrawing** from fossil fuel-fired power production with **resolve**.

The first 300 megawatt lignite unit in the Rhenish coal mining region will be taken offline as early as **December**.

Rolf Martin Schmitz
CEO of RWE AG

X Power plant in operation
 X Power plant unit in security standby
 X Power plant/opencast mine shut down





*Expanding
offshore wind power
presents a great
opportunity to Germany.*

*This requires suitable
investment conditions.*

Rolf Martin Schmitz
CEO of RWE AG



Our energy for a sustainable life



Annual General Meeting 2020 - 26 June 2020

We are faring well during the corona crisis, investing in renewable energy and storage, and will be carbon neutral by 2040.

RWE is on the right course to the future.

Rolf Martin Schmitz
CEO of RWE AG

