

RWE

**Sustainability
at RWE.**



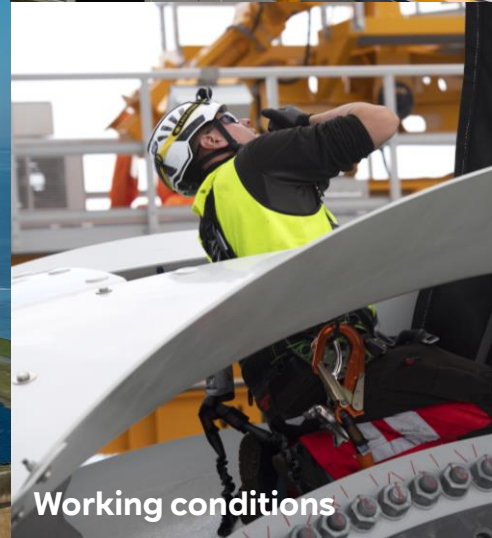
We drive the energy transition with sustainable investments while improving our impact on key sustainability issues.



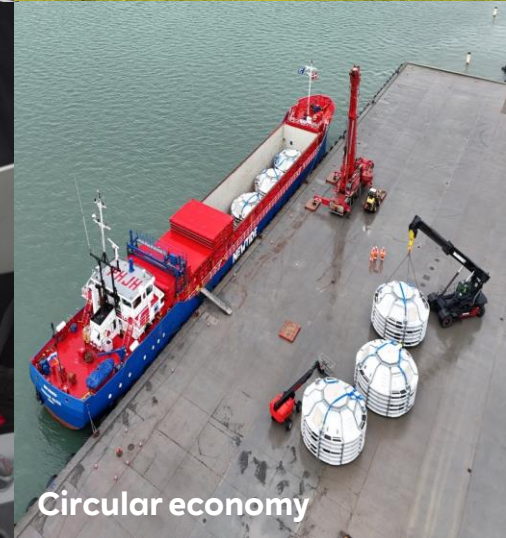
Climate



Biodiversity

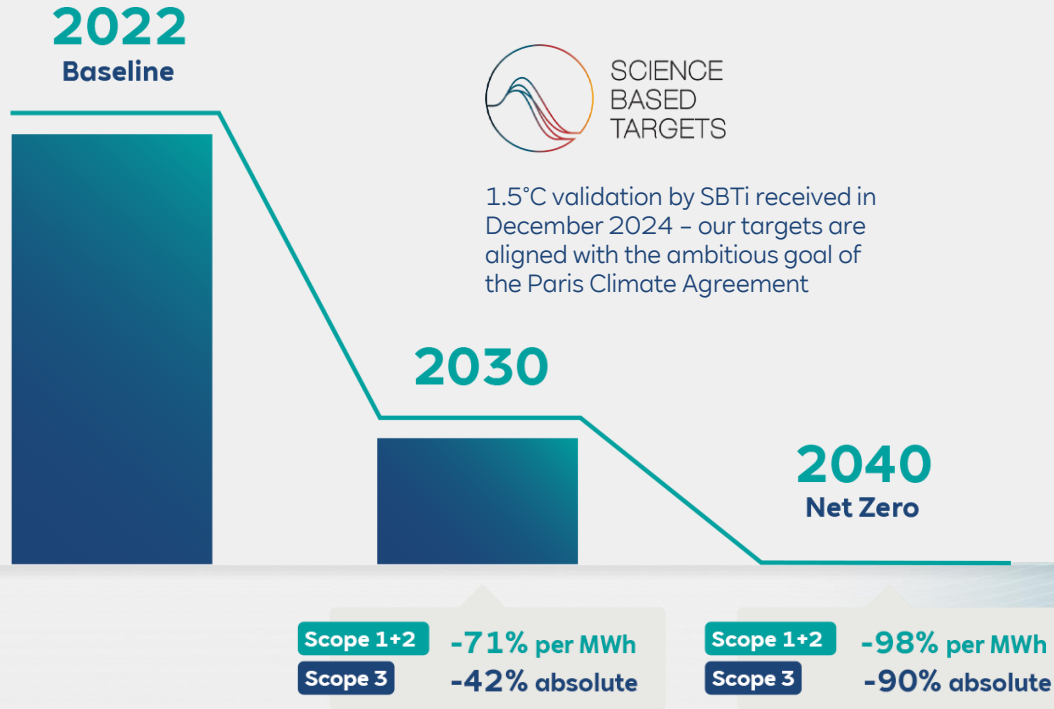


Working conditions



Circular economy

Comprehensive, ambitious climate targets guide our actions.



SCIENCE
BASED
TARGETS

1.5°C validation by SBTi received in December 2024 – our targets are aligned with the ambitious goal of the Paris Climate Agreement

Scope 1

Operations-related direct GHG emissions

Scope 2

Operations-related indirect GHG emissions from generation of acquired and consumed electricity

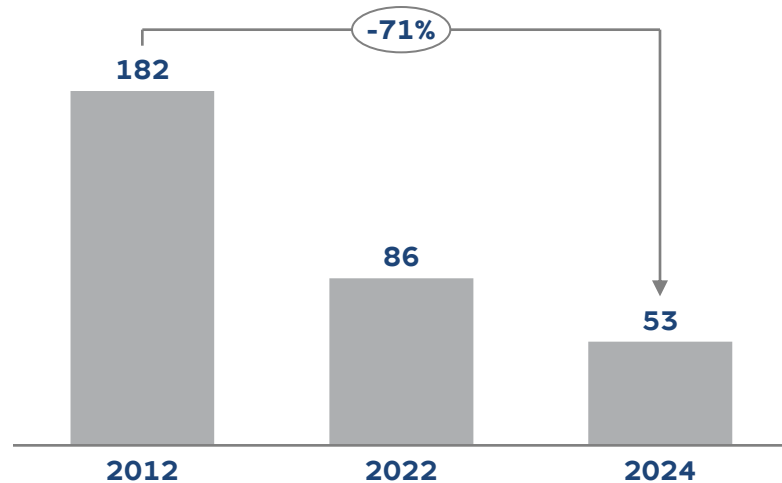
Scope 3

Up- and downstream indirect GHG emissions from value chain

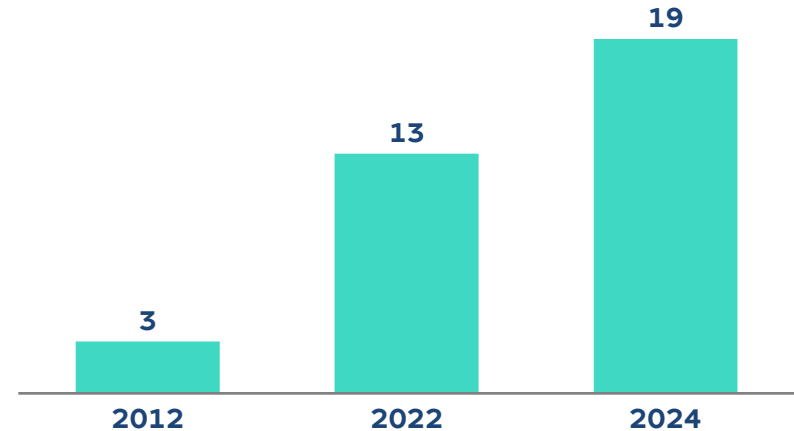


Since 2012, we have cut annual emissions by 128 MtCO₂e and expanded renewable capacity by 16 GW.

Scope 1 emissions
MtCO₂e



Renewable capacity
GW



MtCO₂e: million metric tonnes carbon dioxide equivalent

We prioritise mitigation measures in our climate action approach.



Complete coal exit



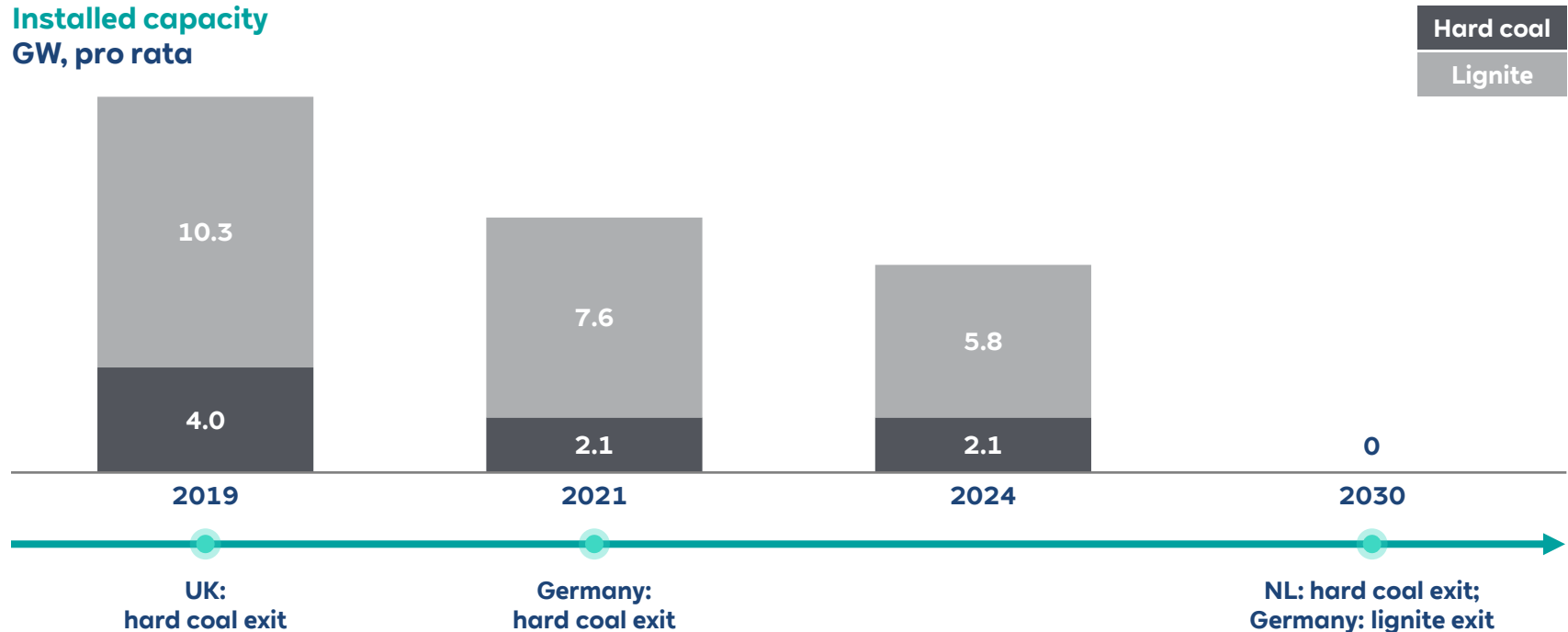
Expand renewable energy capacity



Reduce indirect emissions

We brought forward the coal phase-out to 2030, 8 years ahead of schedule, avoiding 280 million tonnes of CO₂.

Installed capacity
GW, pro rata



From construction to power generation, we are scaling up the low-carbon energy system of the future.

We are developing **hydrogen-ready** gas-fired power plants and expanding electrolysis capacity

Our 14 MW pilot plant in Lingen has already started to produce green hydrogen

From 2030 to 2044, we will supply 30,000 tons of green hydrogen annually to TotalEnergies



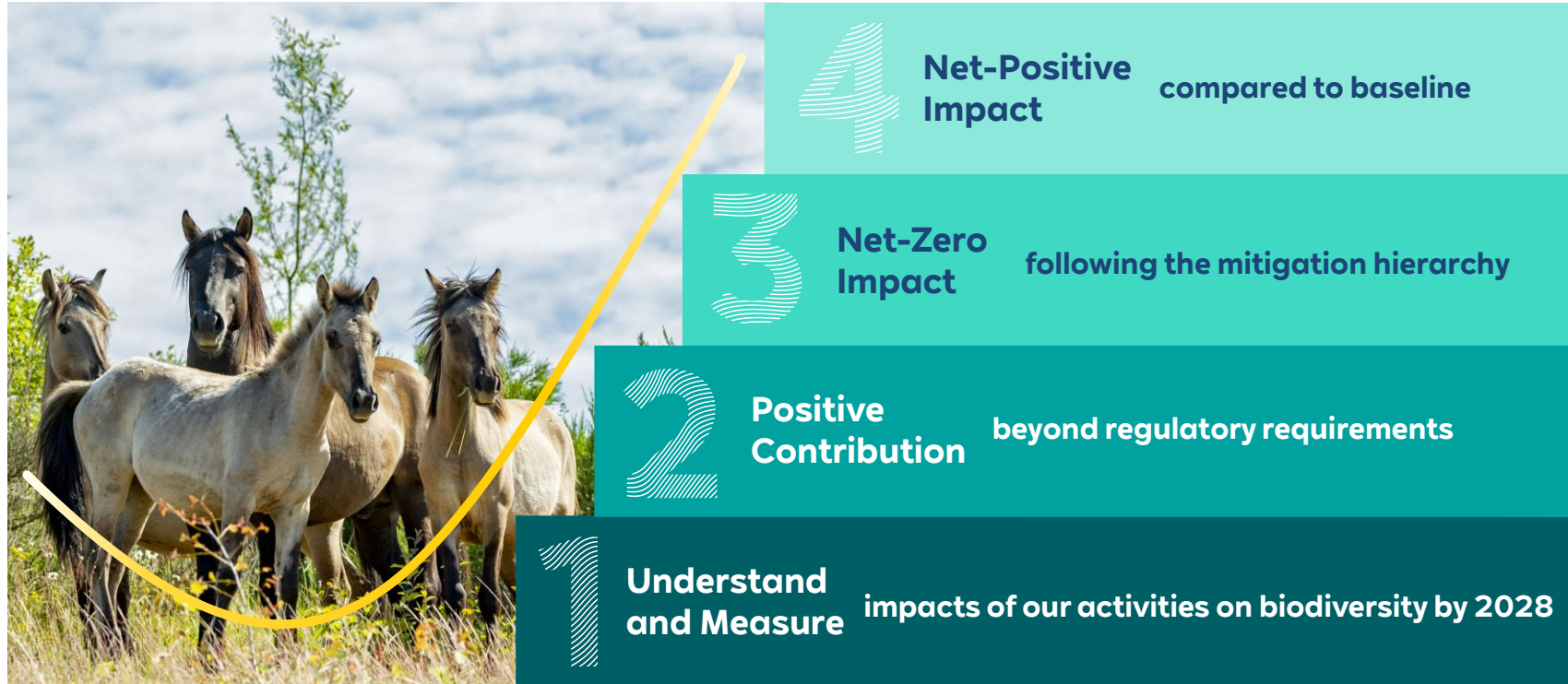
We are **sourcing sustainable materials** and advancing the carbon footprint measurement of renewables

1st developer worldwide to use Siemens Gamesa's GreenerTowers

Greener steel in project Kaskasi with an average of 63% lower CO₂ emissions (vs. conventional steel)



For new assets we aim to achieve a net-positive impact on biodiversity.



We have enhanced biodiversity in the Rhenish lignite area through recultivation and applied research.

233 km²

of opencast mines restored to farmland and woodlands.



50 landscape lakes created



~3,400 animal species identified



~1,500 plants and fungi species identified

[Learn more](#)

We seek opportunities to enhance biodiversity at our sites through a combination of various proven measures.

Since 2025, we aim to achieve an average of 5x the national net biodiversity gain target (i.e. 50%) for our solar farms in the UK

Our Cotmoor solar farm will achieve

65% biodiversity net gain



Wildflower meadows



Wildlife shelters



Small mammals access gates



Rewilding zones

[Learn more](#)

We are implementing cutting-edge technologies to better understand and measure our biodiversity impacts.

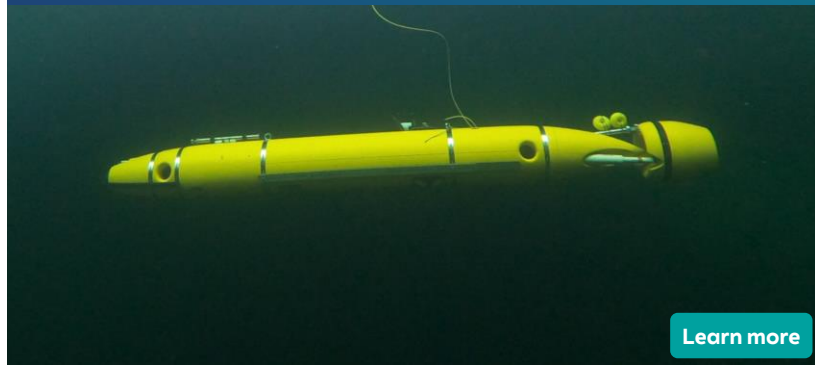
Studying **bird flight behaviour near black blades** at onshore wind farms

Motion sensors, high resolution and thermal imaging cameras and 3D bird radar

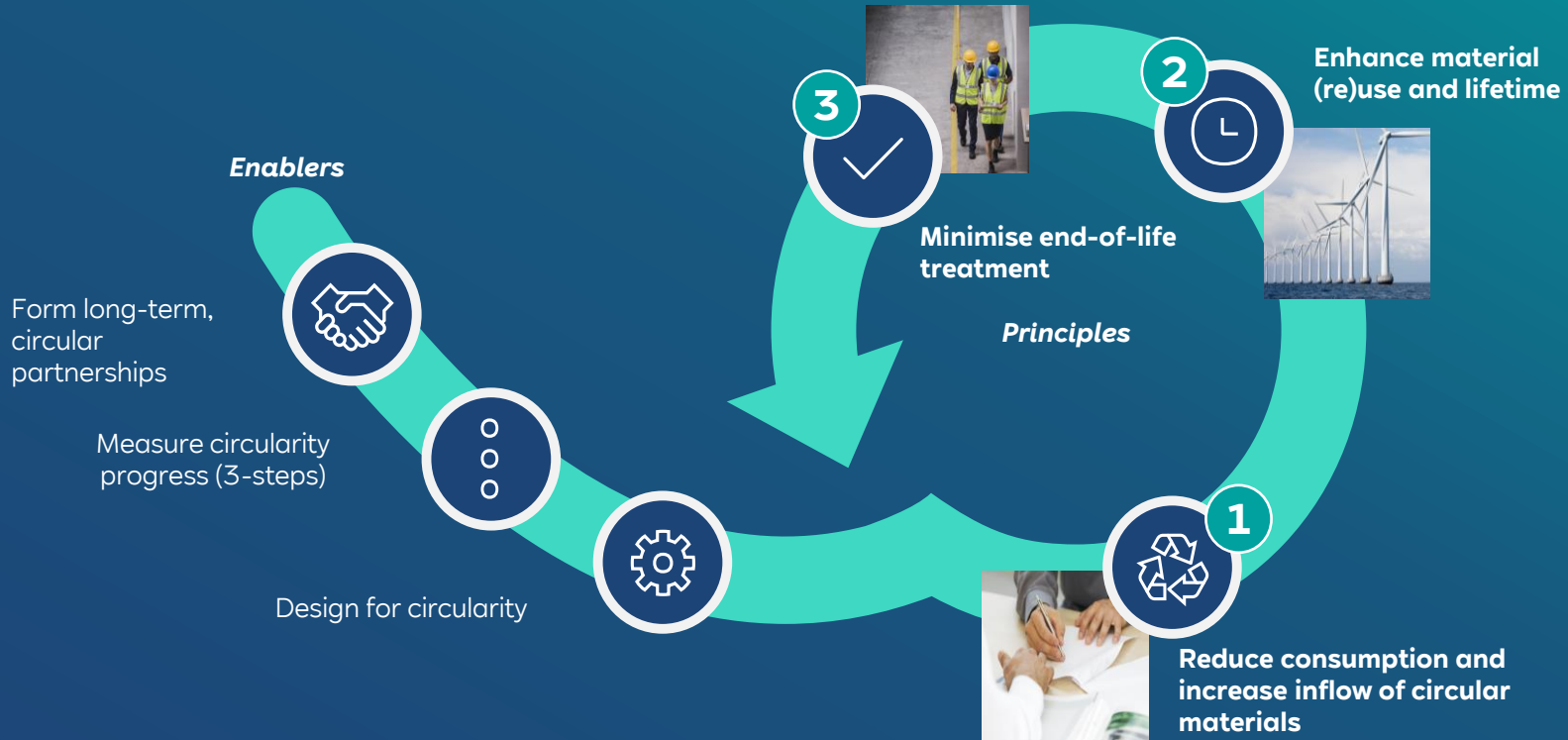
[Learn more](#)

Sustainable ecosystem approach in monitoring the marine environment

AI-based drones, underwater cameras, eDNA and autonomous underwater vehicles

[Learn more](#)

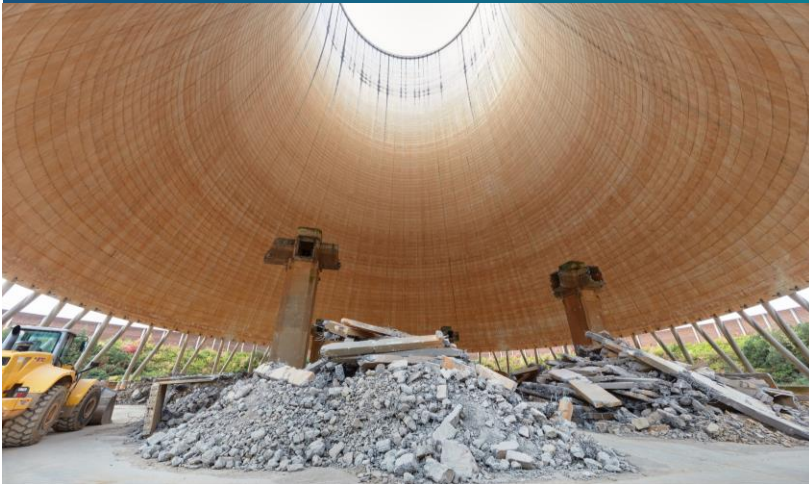
Our goal is to transform business operations to be fully circular by 2050.



We are developing processes to reduce and utilise waste.

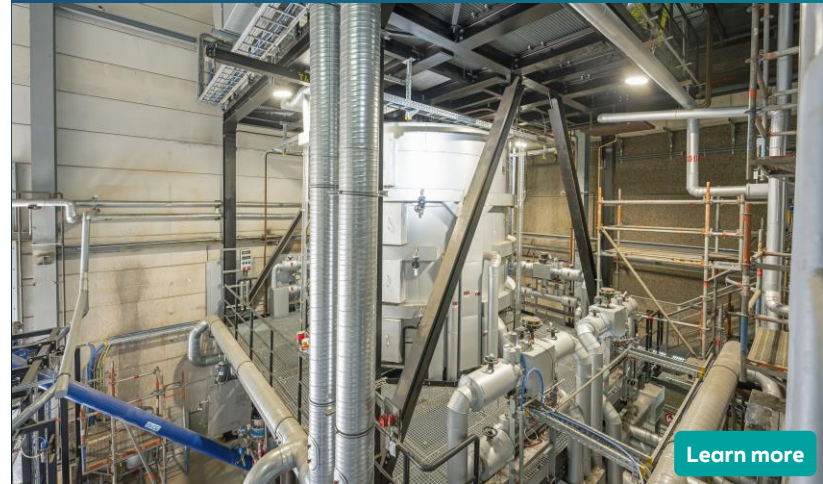
Advancing **concrete and steel recycling**

>90% nuclear and coal plants demolition materials are prepared into first-rate recyclables



Developing **waste-to-resource solutions**

Our FUREC project aims to produce **60 kg of hydrogen per ton of waste**



Circularity is driven together with partners.

Adopting suppliers' **sustainable products**

50 out of 100 turbines at the Sofia offshore wind farm and 40 out of 72 at Thor will use recyclable blades



[Learn more](#)

Promoting **joint innovation**

Consortium partnership with Rencycle to enable **circular solutions for blade end-of-life management**



We have established Health & Safety as a core value in our operations, protecting our employees and contractors.

By defining H&S as a priority, we create an awareness and mindfulness culture **to prevent work-related health hazards**



2024 performance:

- 0 fatalities
- LTIF of 1.6 accidents per million hours



We integrate respect for human rights into our own operations and supply chain.



To uphold ethical business practices, we commit to international standards, such as the UN Guiding Principles and the ILO Conventions.



To identify, prevent and mitigate violations, we implemented a human rights risk management system and whistleblower system.



To strengthen our impact, we collaborate with initiatives, such as the Branchendialog and RECOSI.

[Learn more](#)

We leverage our teams' diversity to master our business transformation process.

Global Women's Network



2nd place
(in 2025)



Business leader
member

LGBTIQ & Friends



1st place
(among German utilities)

[Learn more](#)

We empower local communities through our engagement framework.

€125 million as starting capital for the **RWE Foundation**



>£100 million committed into **UK community funded projects**



0.2 ct per kWh produced at renewable energy plants in **Germany paid to municipalities**



Our work drives high performance in major sustainability ratings.

MSCI 

A

CCC to AAA

 **SUSTAINALYTICS**

24.1

100 to 0
(0 = top mark)

ISS ESG 

B-

D- to A+

 **CDP**
DISCLOSURE INSIGHT ACTION







B

for Climate

D- to A

Scores shown are based on the most recent full rating assessments. All scores were published in 2025, except for ISS ESG (published in 2024).

Our alliances strengthen our commitment to sustainable development.

 <p>United Nations Global Compact</p>	→ Signatory of the 10 principles underlying the UNGC
 <p>CARBON TRUST</p>	→ Partner of the Offshore Wind Sustainability JIP
 <p>UNEZA UTILITIES FOR NET ZERO ALLIANCE</p>	→ Founding member
 <p>ocean Offshore Coalition for Energy and Nature</p>	→ Accelerating offshore renewables while ensuring nature protection
 <p>eNG COALITION</p>	→ Founding member
 <p>RESPONSIBLE COMMODITIES SOURCING INITIATIVE</p>	→ Member of the Board of Directors

This is not an exhaustive list



Learn more in our Annual Report, aligned with the European Sustainability Reporting Standards.

[Download report](#)

RWE

