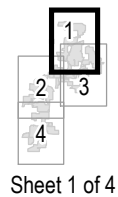


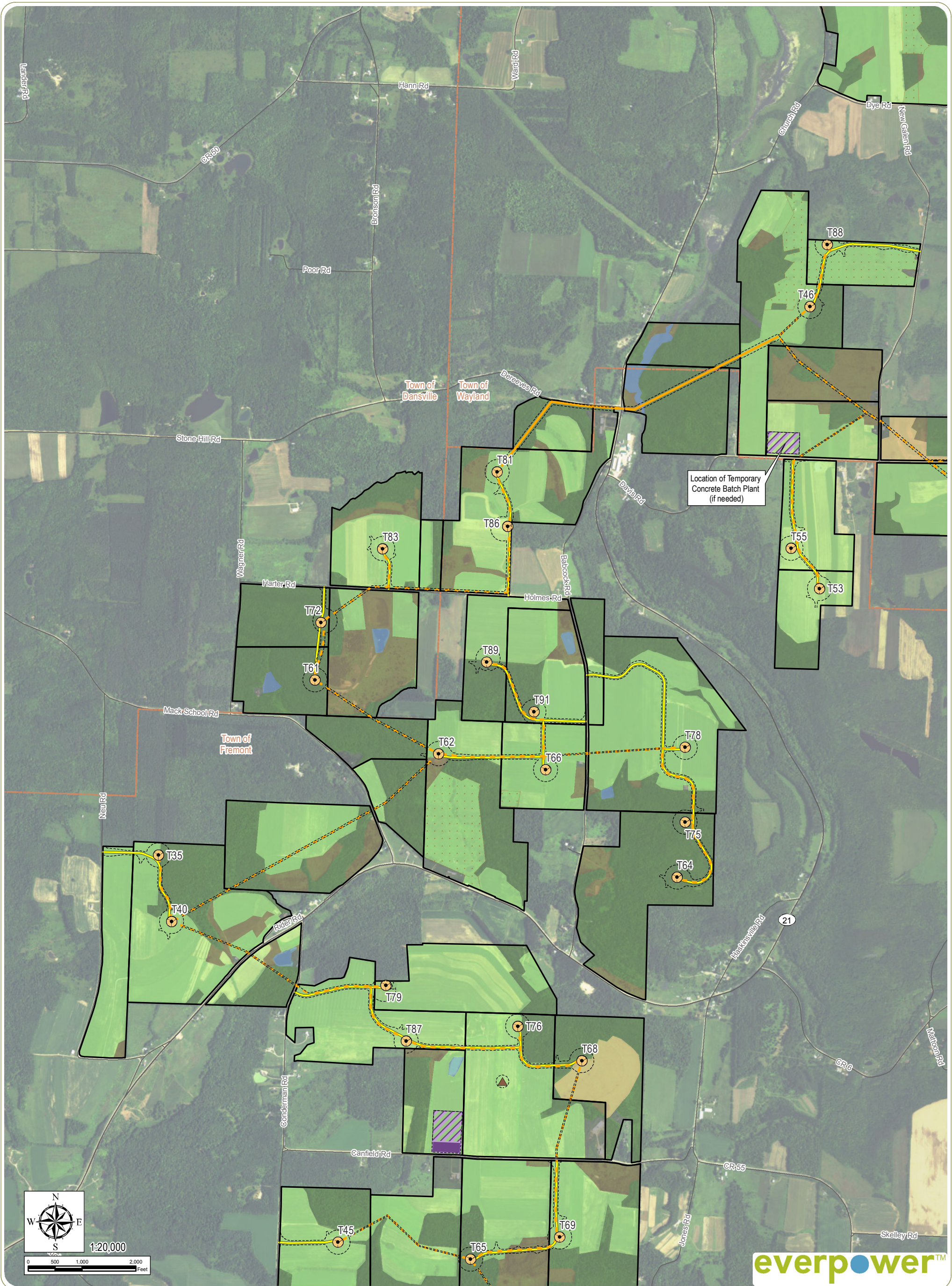
**Baron Winds Project**  
 Towns of Cohocton, Dansville, Fremont, and  
 Wayland - Steuben County, New York  
 Article 10 Application  
**Figure 22-1: Impact to Plant Communities**



Sheet 1 of 4

- |                          |                               |                          |
|--------------------------|-------------------------------|--------------------------|
| Wind Turbine             | Collector Substation          | Cropland/Hayfield        |
| Permanent Met Tower      | POI Substation                | Pasture                  |
| Buried Collection Line   | Approximate Limit of Clearing | Forestland               |
| Overhead Collection Line | Facility Site                 | Successional Old Field   |
| Access Road              | City/Village Boundary         | Successional Scrub-Shrub |
| Laydown Yard             | Town Boundary                 | Disturbed/Developed      |
| O&M Building             | County Boundary               | Open Water               |

**Notes:** 1. Basemap: ESRI ArcGIS Online "World Imagery" map service. 2. This map was generated in ArcMap on November 21, 2017. 3. This is a color graphic. Reproduction in grayscale may misrepresent the data.

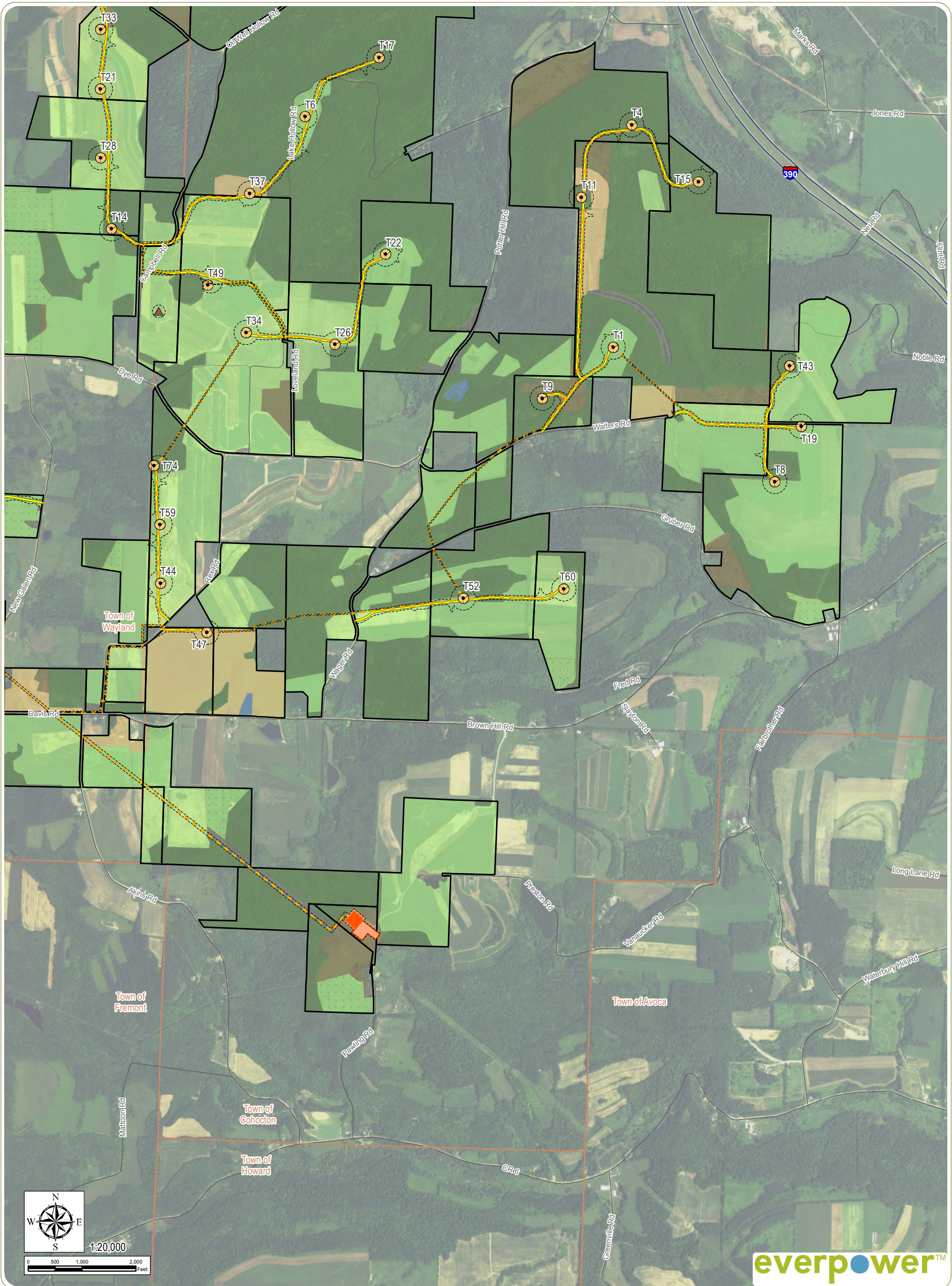


**Baron Winds Project**  
 Towns of Cohocton, Dansville, Fremont, and  
 Wayland - Steuben County, New York  
 Article 10 Application  
**Figure 22-1: Impact to Plant Communities**

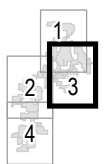
1 2 3  
 4  
 Sheet 2 of 4

- |   |  |  |
|---|--|--|
| <ul style="list-style-type: none"> <li> Wind Turbine</li> <li> Permanent Met Tower</li> <li> Buried Collection Line</li> <li> Overhead Collection Line</li> <li> Access Road</li> <li> Laydown Yard</li> <li> O&amp;M Building</li> </ul> | <ul style="list-style-type: none"> <li> Collector Substation</li> <li> POI Substation</li> <li> Approximate Limit of Clearing</li> <li> Facility Site</li> <li> City/Village Boundary</li> <li> Town Boundary</li> <li> County Boundary</li> </ul> | <ul style="list-style-type: none"> <li> Cropland/Hayfield</li> <li> Pasture</li> <li> Forestland</li> <li> Successional Old Field</li> <li> Successional Scrub-Shrub</li> <li> Disturbed/Developed</li> <li> Open Water</li> </ul> |
|---|--|--|

**Notes:** 1. Basemap: ESRI ArcGIS Online "World Imagery" map service. 2. This map was generated in ArcMap on November 21, 2017. 3. This is a color graphic. Reproduction in grayscale may misrepresent the data.



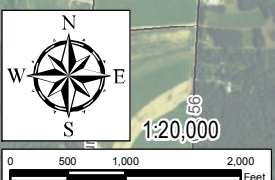
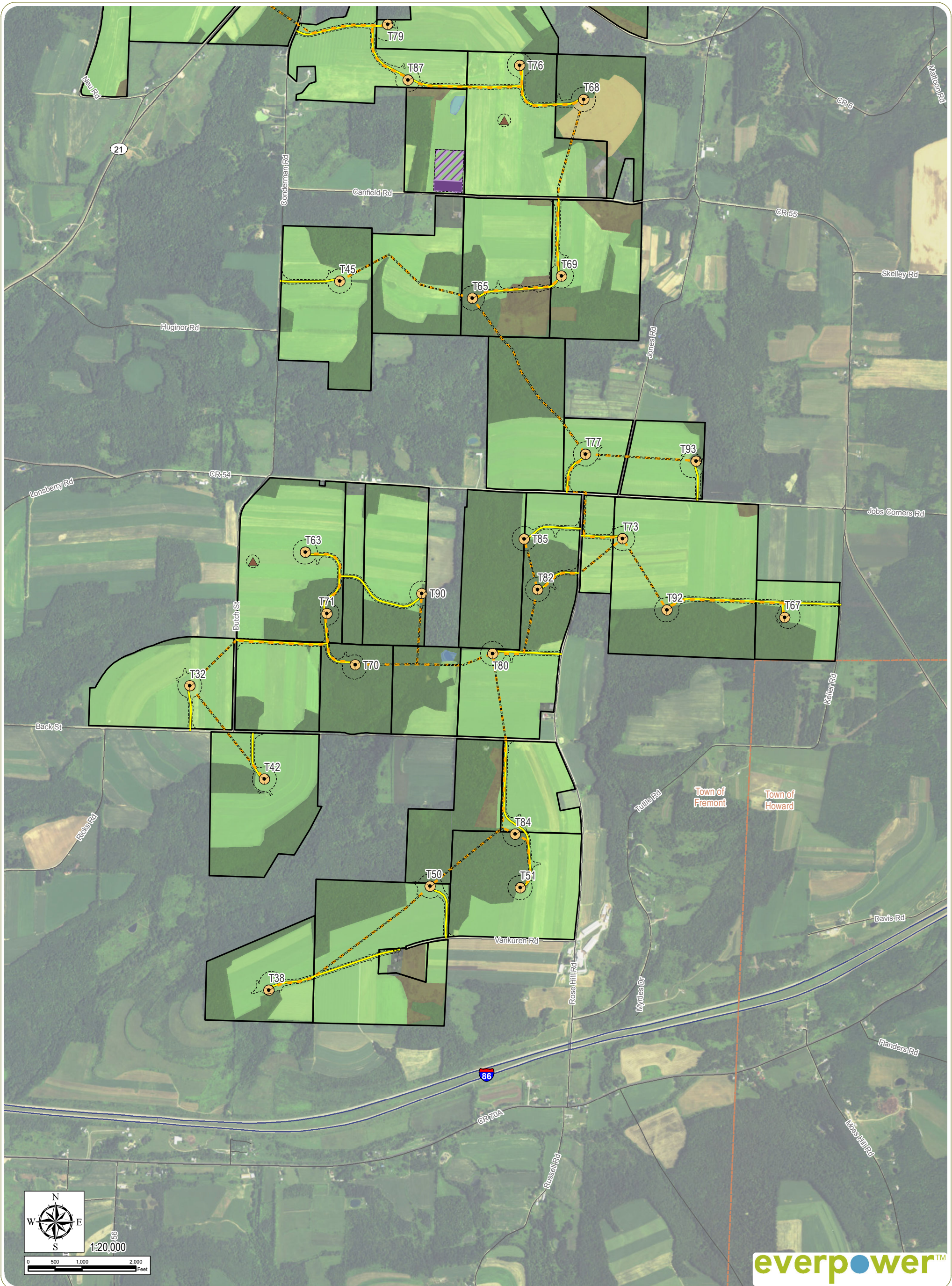
**Baron Winds Project**  
 Towns of Cohocton, Dansville, Fremont, and  
 Wayland - Steuben County, New York  
 Article 10 Application  
**Figure 22-1: Impact to Plant Communities**



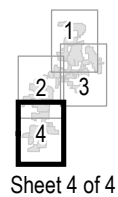
Sheet 3 of 4

- |                          |                               |                          |
|--------------------------|-------------------------------|--------------------------|
| Wind Turbine             | Collector Substation          | Vegetative Community     |
| Permanent Met Tower      | POI Substation                | Cropland/Hayfield        |
| Buried Collection Line   | Approximate Limit of Clearing | Pasture                  |
| Overhead Collection Line | Facility Site                 | Forestland               |
| Access Road              | City/Village Boundary         | Successional Old Field   |
| Laydown Yard             | Town Boundary                 | Successional Scrub-Shrub |
| O&M Building             | County Boundary               | Disturbed/Developed      |
|                          |                               | Open Water               |

**Notes:** 1. Basemap: ESRI ArcGIS Online "World Imagery" map service. 2. This map was generated in ArcMap on November 21, 2017. 3. This is a color graphic. Reproduction in grayscale may misrepresent the data.



**Baron Winds Project**  
 Towns of Cohocton, Dansville, Fremont, and  
 Wayland - Steuben County, New York  
 Article 10 Application  
**Figure 22-1: Impact to Plant Communities**



- |                          |                               |                          |
|--------------------------|-------------------------------|--------------------------|
| Wind Turbine             | Collector Substation          | Cropland/Hayfield        |
| Permanent Met Tower      | POI Substation                | Pasture                  |
| Buried Collection Line   | Approximate Limit of Clearing | Forestland               |
| Overhead Collection Line | Facility Site                 | Successional Old Field   |
| Access Road              | City/Village Boundary         | Successional Scrub-Shrub |
| Laydown Yard             | Town Boundary                 | Disturbed/Developed      |
| O&M Building             | County Boundary               | Open Water               |

**Notes:** 1. Basemap: ESRI ArcGIS Online "World Imagery" map service. 2. This map was generated in ArcMap on November 21, 2017. 3. This is a color graphic. Reproduction in grayscale may misrepresent the data.

