

Baron Winds Project
 Towns of Cohocton, Dansville, Fremont, and
 Wayland - Steuben County, New York

Article 10 Application
**Figure 23-1: Depth to Bedrock
 and High Water Table**

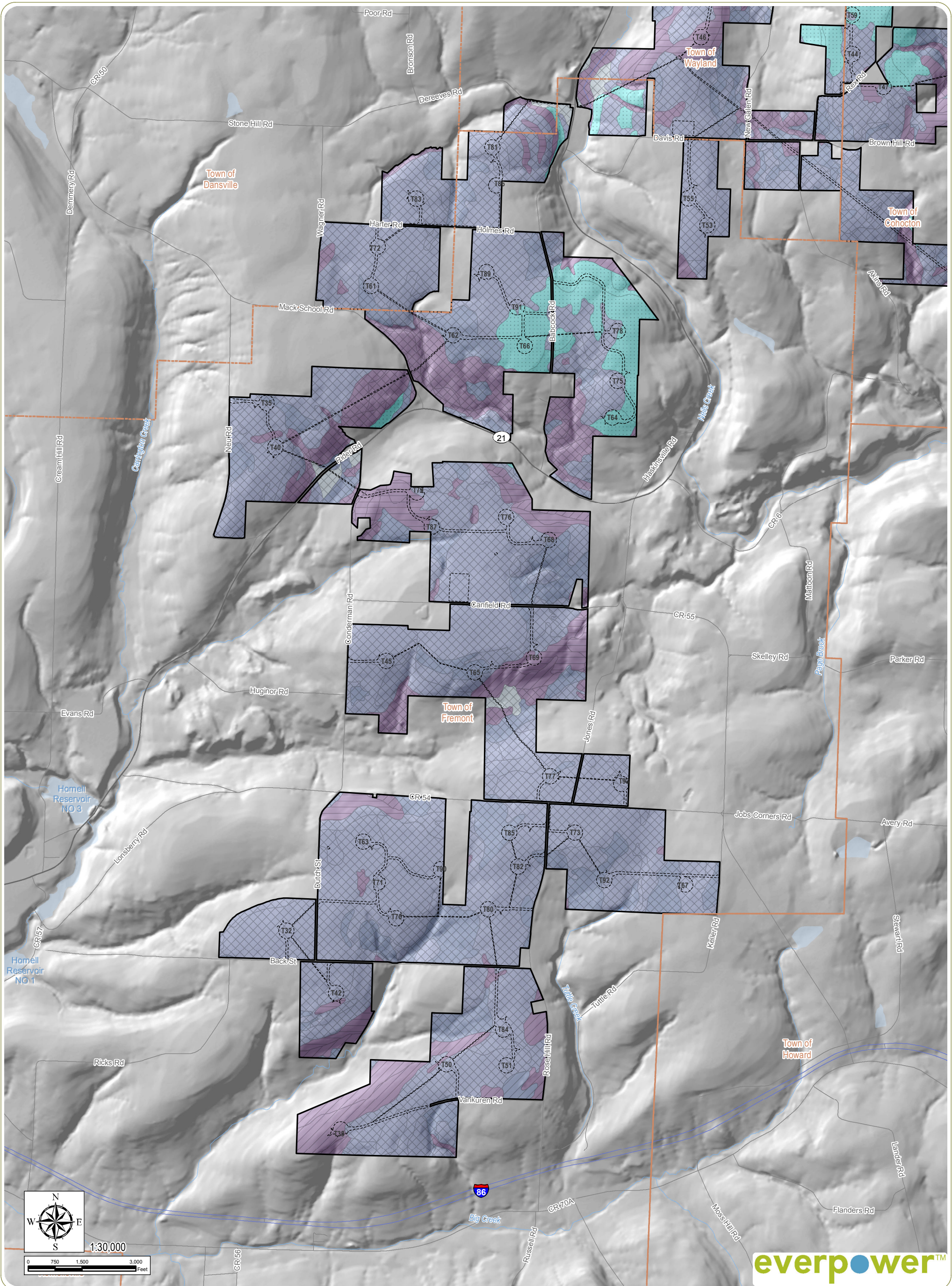
Notes: 1. Basemap: Hillshade derived from 10-meter resolution DEM data. 2. This map was generated in ArcMap on November 21, 2017. 3. This is a color graphic. Reproduction in grayscale may misrepresent the data.

Sheet 1 of 2

Depth to Bedrock	Depth to High Water Table	Limit of Soil Disturbance
<1 foot	0 (At Ground Surface)	Facility Site
1-2 feet	< 1 foot	City/Village Boundary
2-5 feet	1-2 feet	Town Boundary
>5 feet	2-5 feet	County Boundary
	>4 feet	

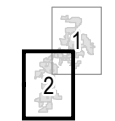


www.edrpc.com



Baron Winds Project
 Towns of Cohocton, Dansville, Fremont, and
 Wayland - Steuben County, New York

Article 10 Application
**Figure 23-1: Depth to Bedrock
 and High Water Table**



Sheet 2 of 2

Notes: 1. Basemap: Hillshade derived from 10-meter resolution DEM data. 2. This map was generated in ArcMap on November 21, 2017. 3. This is a color graphic. Reproduction in grayscale may misrepresent the data.

Depth to Bedrock	Depth to High Water Table	Limit of Soil Disturbance
<1 foot	0 (At Ground Surface)	Facility Site
1-2 feet	< 1 foot	City/Village Boundary
2-5 feet	1-2 feet	Town Boundary
>5 feet	2-5 feet	County Boundary
	>4 feet	



www.edrdpc.com