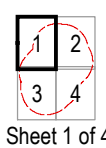


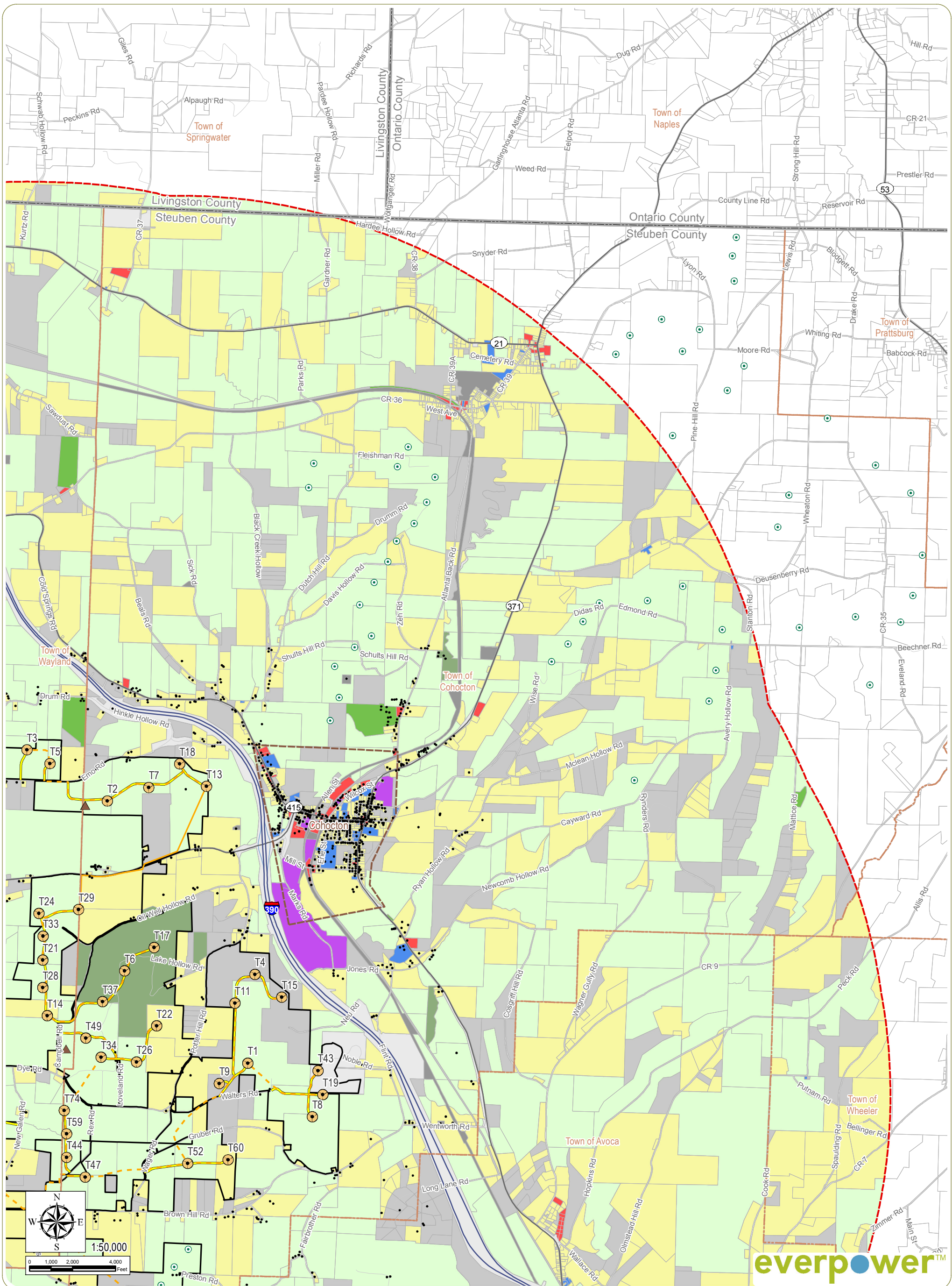
Baron Winds Project
 Towns of Cohocton, Dansville, Fremont, and
 Wayland - Steuben County, New York
 Article 10 Application
Figure 4-1: Existing Land Use



- Structure
- ⊙ Existing Wind Turbine
- ⊙ Proposed Wind Turbine
- ▲ Permanent Met Tower
- Buried Collection Line
- Overhead Collection Line
- Access Road
- ▨ Laydown Yard
- ▨ O&M Building
- ▨ Collector Substation
- POI Substation
- ▭ Facility Site
- ▭ 5-Mile Study Area
- Land Use
- Agricultural
- Commercial
- Community Services
- Industrial
- Public Services
- Recreation & Entertainment
- Residential
- Uncategorized
- Vacant Land
- Wild, Forested, Conservation Lands & Public Parks
- ▭ Parcel Boundary

Notes: 1. Basemap: ESRI StreetMap North America, 2008; Steuben County parcel data. 2. This map was generated in ArcMap on November 21, 2017. 3. This is a color graphic. Reproduction in grayscale may misrepresent the data.





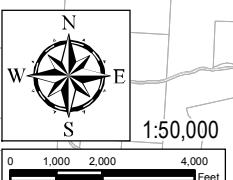
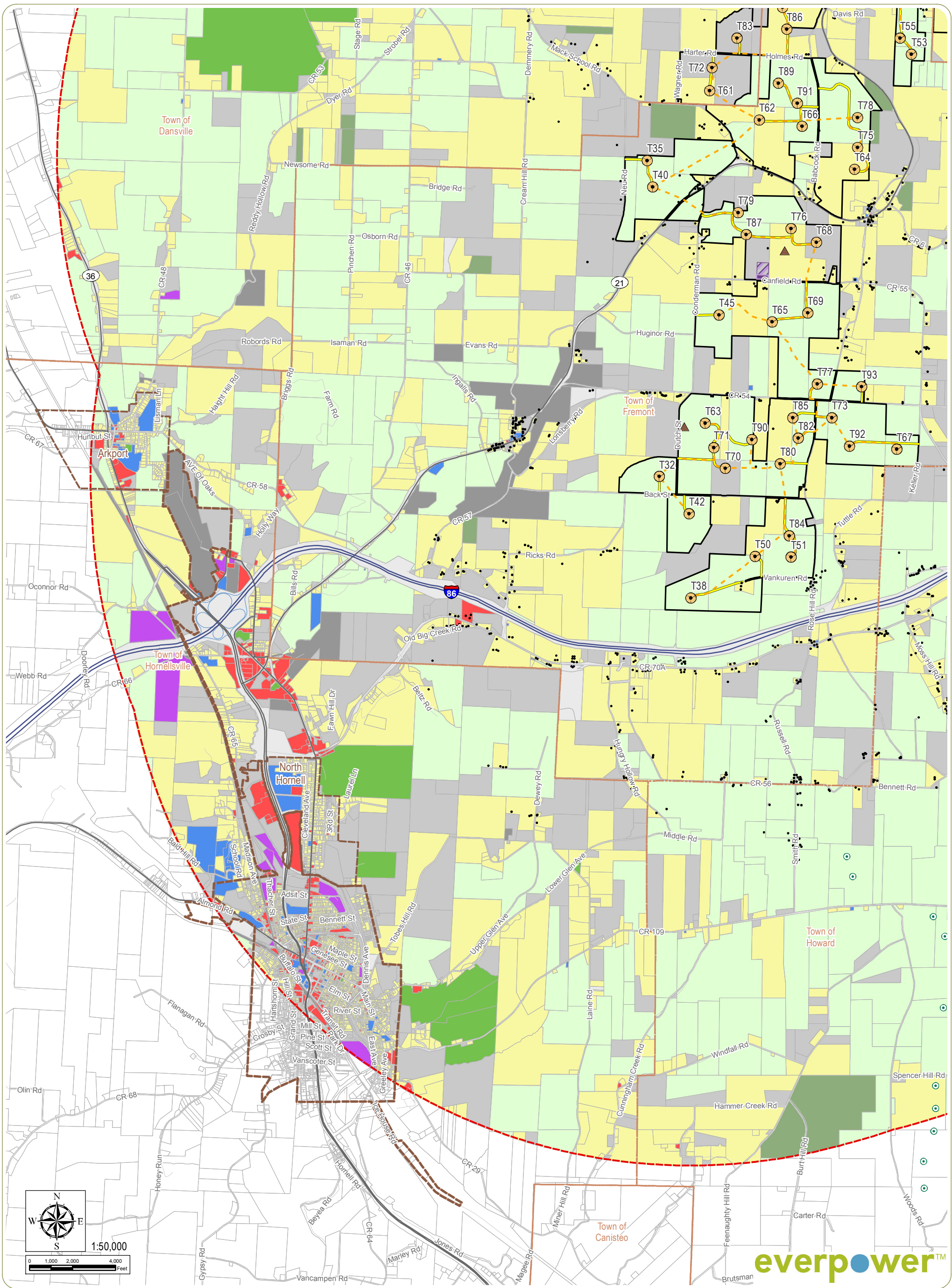
Baron Winds Project
 Towns of Cohocton, Dansville, Fremont, and Wayland - Steuben County, New York
 Article 10 Application
Figure 4-1: Existing Land Use

Sheet 2 of 4

- Structure
- ⊙ Existing Wind Turbine
- ⊙ Proposed Wind Turbine
- ▲ Permanent Met Tower
- Buried Collection Line
- Overhead Collection Line
- Access Road
- ▨ Laydown Yard
- ▨ O&M Building
- ▨ Collector Substation
- ▨ POI Substation
- ▨ Facility Site
- ▨ 5-Mile Study Area
- Land Use
- ▨ Agricultural
- ▨ Commercial
- ▨ Community Services
- ▨ Industrial
- ▨ Public Services
- ▨ Recreation & Entertainment
- ▨ Residential
- ▨ Uncategorized
- ▨ Vacant Land
- ▨ Wild, Forested, Conservation Lands & Public Parks
- ▨ Parcel Boundary

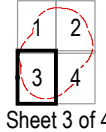
Notes: 1. Basemap: ESRI StreetMap North America, 2008; Steuben County parcel data. 2. This map was generated in ArcMap on November 21, 2017. 3. This is a color graphic. Reproduction in grayscale may misrepresent the data.





everpower™

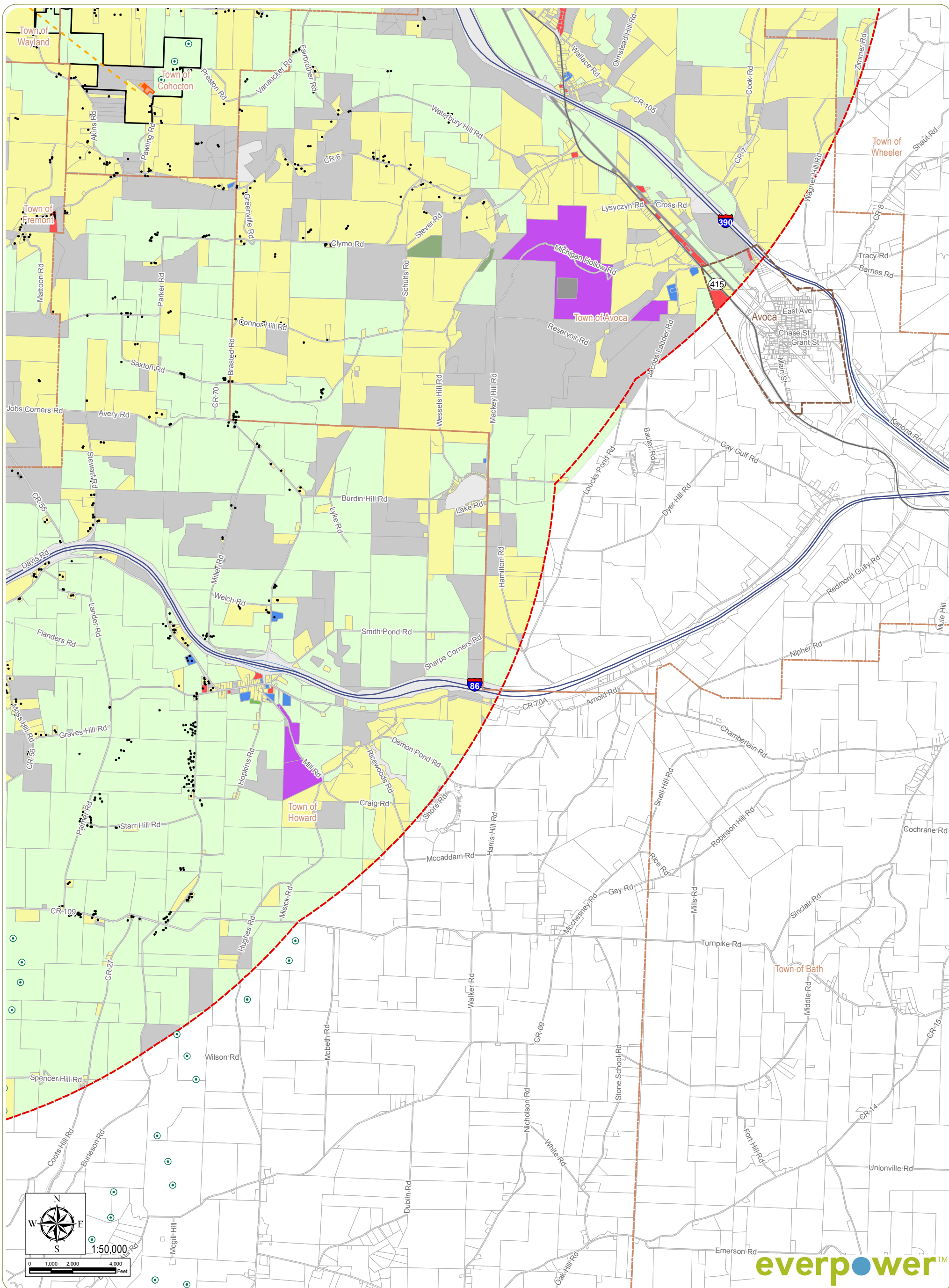
Baron Winds Project
 Towns of Cohocton, Dansville, Fremont, and
 Wayland - Steuben County, New York
 Article 10 Application
Figure 4-1: Existing Land Use



- Structure
- ⊙ Existing Wind Turbine
- ⦿ Proposed Wind Turbine
- ▲ Permanent Met Tower
- Buried Collection Line
- Overhead Collection Line
- Access Road
- ▨ Laydown Yard
- ▨ O&M Building
- ▨ Collector Substation
- POI Substation
- ▭ Facility Site
- ▭ 5-Mile Study Area
- Land Use
- ▭ Agricultural
- ▭ Commercial
- ▭ Community Services
- ▭ Industrial
- ▭ Public Services
- ▭ Recreation & Entertainment
- ▭ Residential
- ▭ Uncategorized
- ▭ Vacant Land
- ▭ Wild, Forested, Conservation Lands & Public Parks
- ▭ Parcel Boundary

Notes: 1. Basemap: ESRI StreetMap North America, 2008; Steuben County parcel data. 2. This map was generated in ArcMap on November 21, 2017. 3. This is a color graphic. Reproduction in grayscale may misrepresent the data.





Baron Winds Project
 Towns of Cohocton, Dansville, Fremont, and
 Wayland - Steuben County, New York
 Article 10 Application
Figure 4-1: Existing Land Use



- Structure
- ⊙ Existing Wind Turbine
- ⊙ Proposed Wind Turbine
- ▲ Permanent Met Tower
- Buried Collection Line
- Overhead Collection Line
- Access Road
- ▨ Laydown Yard
- O&M Building
- Collector Substation
- POI Substation
- ▭ Facility Site
- ▭ 5-Mile Study Area
- Land Use
- Agricultural
- Commercial
- Community Services
- Industrial
- Public Services
- Recreation & Entertainment
- Residential
- Uncategorized
- Vacant Land
- Wild, Forested, Conservation Lands & Public Parks
- ▭ Parcel Boundary

Notes: 1. Basemap: ESRI StreetMap North America, 2008; Steuben County parcel data. 2. This map was generated in ArcMap on November 21, 2017. 3. This is a color graphic. Reproduction in grayscale may misrepresent the data.

