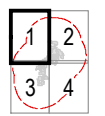


Baron Winds Project
 Towns of Cohocton, Dansville, Fremont, and
 Wayland - Steuben County, New York

Article 10 Application
Figure 4-3: Transmission Facilities

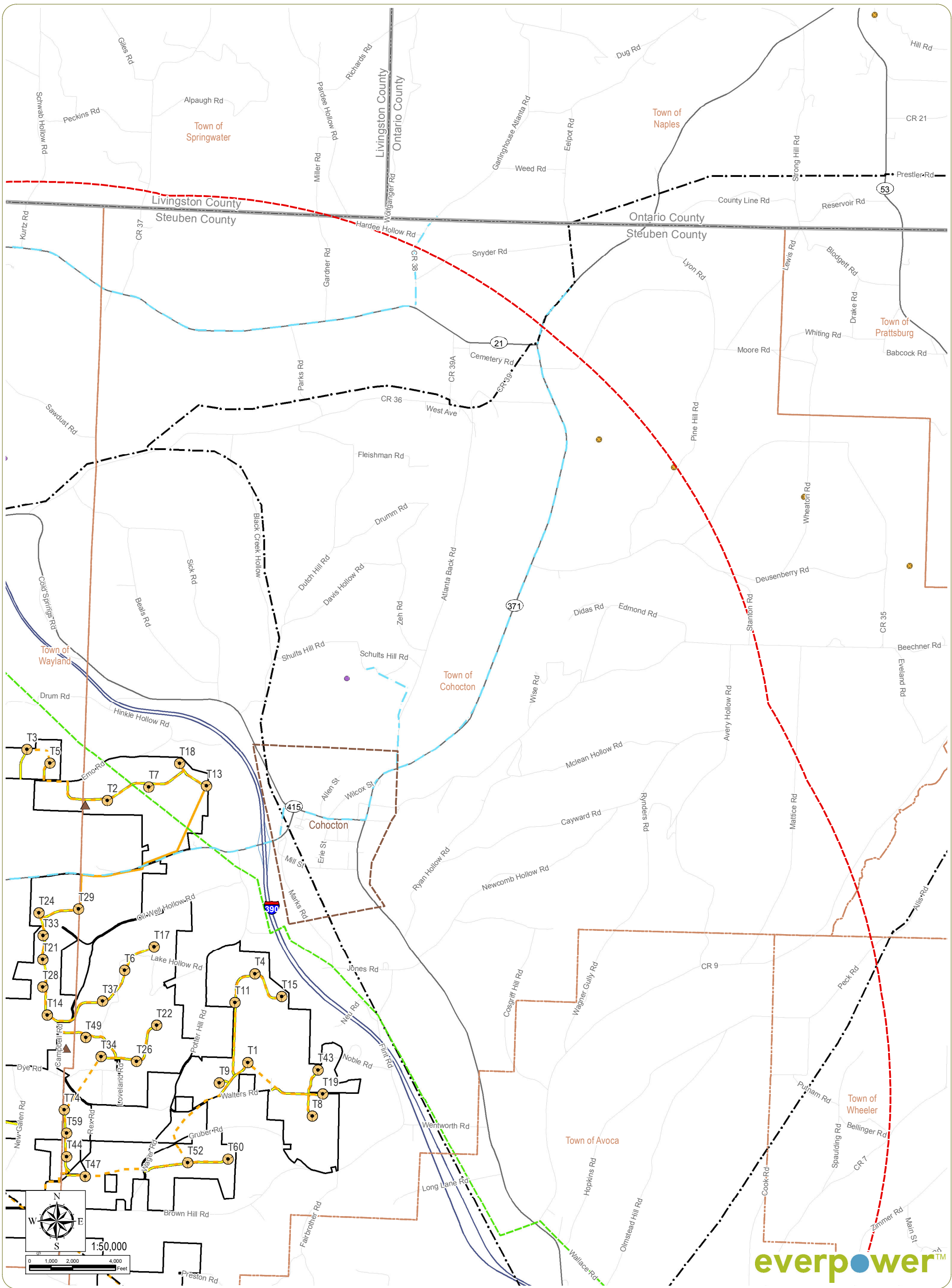
Notes: 1. Basemap: ESRI StreetMap North America, 2008; Steuben County parcel data.
 2. This map was generated in ArcMap on November 21, 2017. 3. This is a color graphic.
 Reproduction in grayscale may misrepresent the data.



Sheet 1 of 4

- | | | |
|-----------------------------------------|------------------------------|-------------------------|
| ● Existing Oil/Gas Well | ⦿ Wind Turbine | □ POI Substation |
| ✕ Abandoned Oil and Gas Well | ▲ Permanent Met Tower | □ Facility Site |
| ● Cell Tower | --- Buried Collection Line | □ 5-Mile Study Area |
| --- Existing Fiber Route | --- Overhead Collection Line | □ City/Village Boundary |
| --- Existing Petroleum Product Pipeline | --- Access Road | □ Town Boundary |
| --- Existing Natural Gas Pipeline | ▨ Laydown Yard | □ County Boundary |
| --- Existing Transmission Line | ■ O&M Building | |
| --- Hazardous Liquid Pipeline | ■ Collector Substation | |

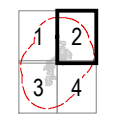




Baron Winds Project
 Towns of Cohocton, Dansville, Fremont, and
 Wayland - Steuben County, New York

Article 10 Application
Figure 4-3: Transmission Facilities

Notes: 1. Basemap: ESRI StreetMap North America, 2008; Steuben County parcel data.
 2. This map was generated in ArcMap on November 21, 2017. 3. This is a color graphic.
 Reproduction in grayscale may misrepresent the data.

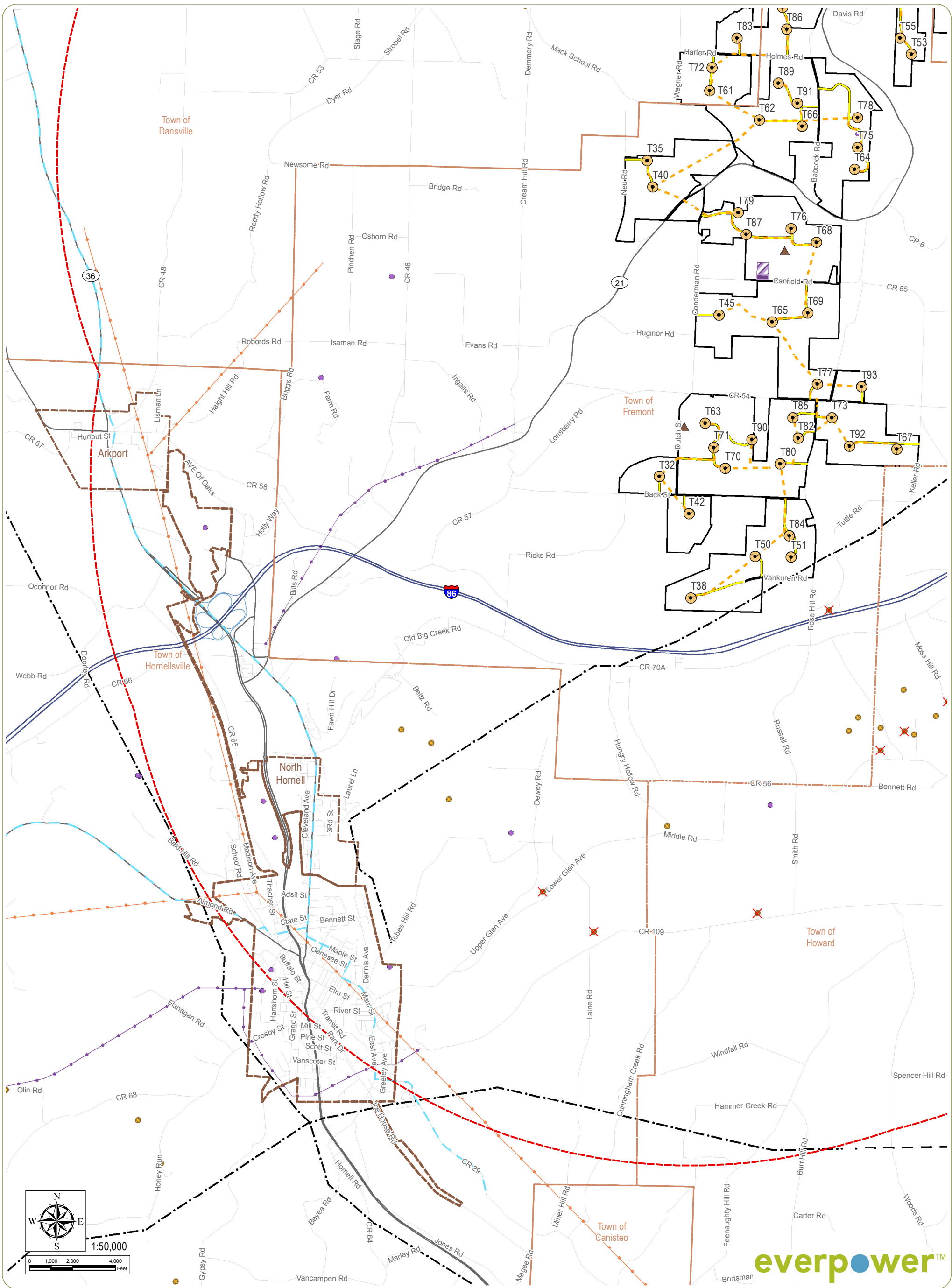


Sheet 2 of 4

- Existing Oil/Gas Well
- ✕ Abandoned Oil and Gas Well
- Cell Tower
- Existing Fiber Route
- Existing Petroleum Product Pipeline
- Existing Natural Gas Pipeline
- Existing Transmission Line
- Hazardous Liquid Pipeline
- Wind Turbine
- ▲ Permanent Met Tower
- Buried Collection Line
- Overhead Collection Line
- Access Road
- ▨ Laydown Yard
- O&M Building
- Collector Substation
- POI Substation
- Facility Site
- 5-Mile Study Area
- City/Village Boundary
- Town Boundary
- County Boundary

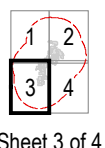


www.edrdpc.com



Baron Winds Project
 Towns of Cohocton, Dansville, Fremont, and
 Wayland - Steuben County, New York

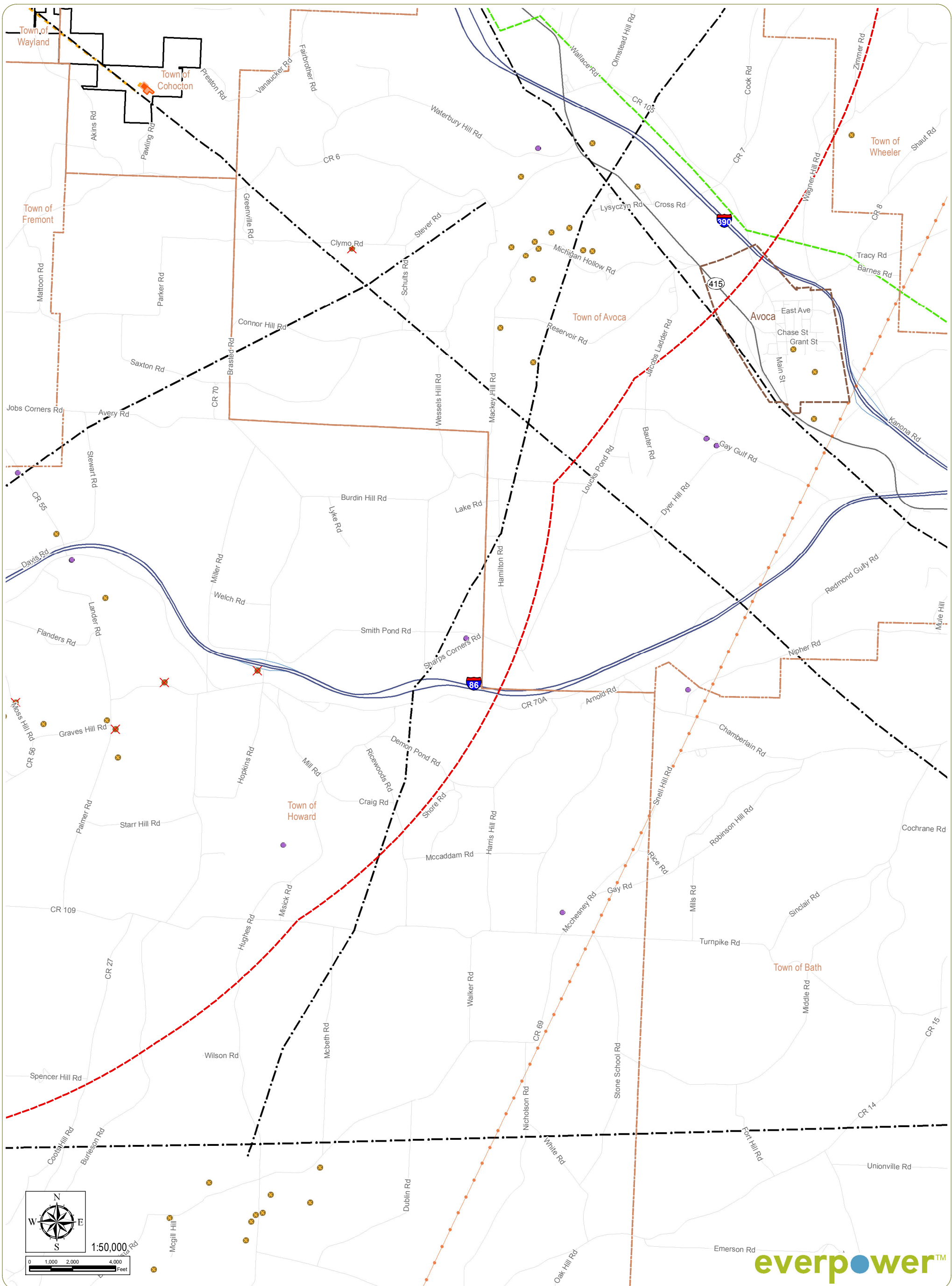
Article 10 Application
Figure 4-3: Transmission Facilities



Notes: 1. Basemap: ESRI StreetMap North America, 2008; Steuben County parcel data.
 2. This map was generated in ArcMap on November 21, 2017. 3. This is a color graphic.
 Reproduction in grayscale may misrepresent the data.

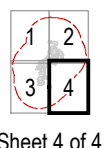
- Existing Oil/Gas Well
- ✕ Abandoned Oil and Gas Well
- Cell Tower
- Existing Fiber Route
- Existing Petroleum Product Pipeline
- Existing Natural Gas Pipeline
- Existing Transmission Line
- Hazardous Liquid Pipeline
- Wind Turbine
- ▲ Permanent Met Tower
- Buried Collection Line
- Overhead Collection Line
- Access Road
- ▨ Laydown Yard
- O&M Building
- Collector Substation
- POI Substation
- Facility Site
- ▭ 5-Mile Study Area
- ▭ City/Village Boundary
- ▭ Town Boundary
- ▭ County Boundary





Baron Winds Project
 Towns of Cohocton, Dansville, Fremont, and
 Wayland - Steuben County, New York

Article 10 Application
Figure 4-3: Transmission Facilities



Notes: 1. Basemap: ESRI StreetMap North America, 2008; Steuben County parcel data.
 2. This map was generated in ArcMap on November 21, 2017. 3. This is a color graphic.
 Reproduction in grayscale may misrepresent the data.

- Existing Oil/Gas Well
- ✕ Abandoned Oil and Gas Well
- Cell Tower
- Existing Fiber Route
- Existing Petroleum Product Pipeline
- Existing Natural Gas Pipeline
- · - · Existing Transmission Line
- Hazardous Liquid Pipeline
- Wind Turbine
- ▲ Permanent Met Tower
- · - · Buried Collection Line
- Overhead Collection Line
- Access Road
- ▨ Laydown Yard
- O&M Building
- Collector Substation
- POI Substation
- Facility Site
- 5-Mile Study Area
- City/Village Boundary
- Town Boundary
- County Boundary

