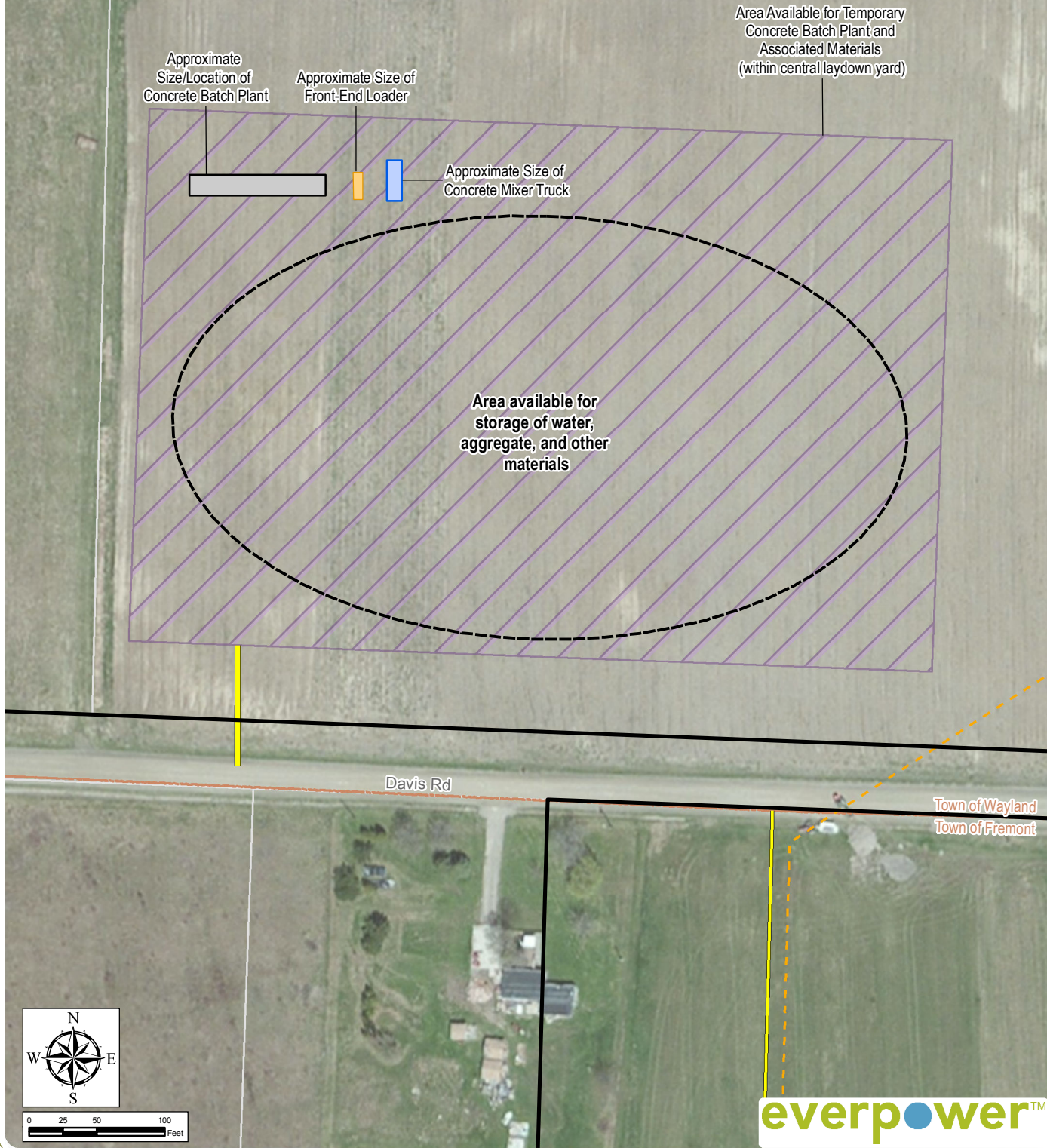


This graphic provides conceptual information only. Final layout/dimensions of batch plant, materials, etc. to be determined by the BOP Contractor.



Baron Winds Project
 Towns of Cohocton, Dansville, Fremont, and
 Wayland - Steuben County, New York

Article 10 Application
Appendix N: Temporary Concrete Batch Plant

Notes: 1. Basemap: ESRI ArcGIS Online "World Imagery" map service. 2. This map was generated in ArcMap on September 28, 2017. 3. This is a color graphic. Reproduction in grayscale may misrepresent the

- - - Buried Collection Line
- Overhead Collection Line
- Access Road
- Laydown Yard
- Facility Site
- Parcel Boundary
- Town Boundary



PHOTO 1

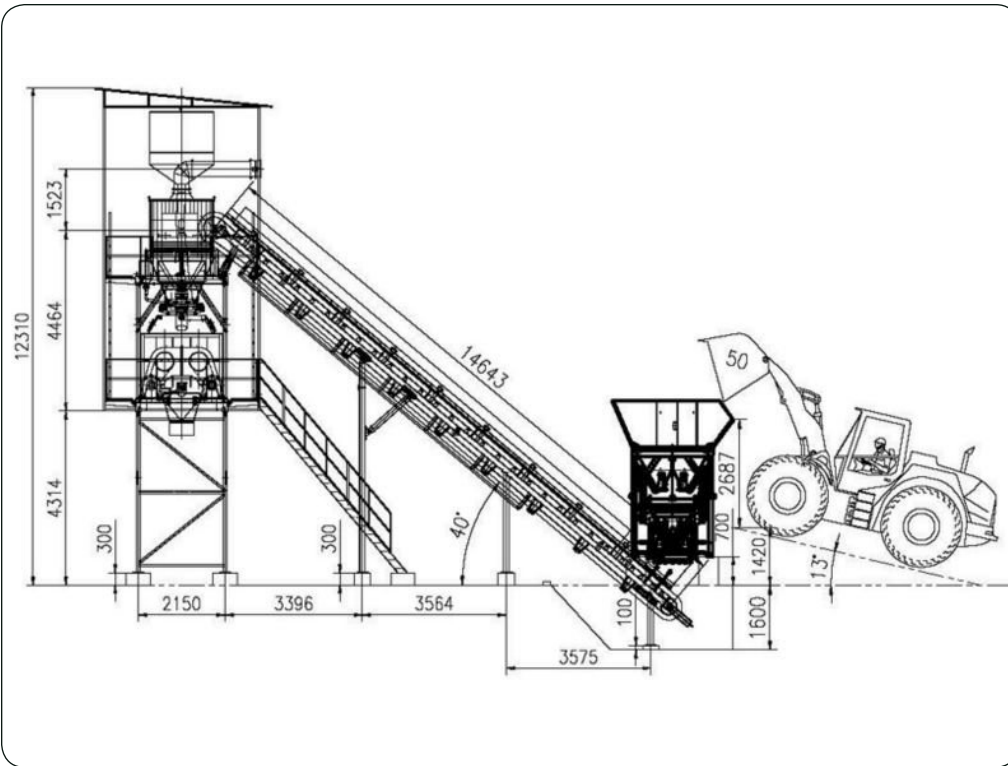


PHOTO 2



Baron Winds Project
Steuben County, New York

Concrete Batch Plant General Information
June 2017

Image Source:
<http://www.concretemobility.com>

Sheet 1 of 3



PHOTO 3



PHOTO 4



Baron Winds Project
Steuben County, New York

Concrete Batch Plant General Information
June 2017

Image Source:
<http://www.concretemobility.com>

Sheet 2 of 3



PHOTO 5



PHOTO 6



Baron Winds Project
Steuben County, New York

Concrete Batch Plant General Information
June 2017

Image Source:
<http://www.concretemobility.com>

Sheet 3 of 3



Superior performance
Outstanding flexibility



MOBILE CONCRETE BATCH PLANT
EG-10MX
HIGH VOLUME

RELIABLE, HEAVY-DUTY EQUIPMENT, SIZED TO FIT YOUR NEEDS.

www.bmhsystems.com

BMH
SYSTEMS

MOBILE CONCRETE BATCH PLANT

EG-10 MX

EG-10 MX MOBILE CONCRETE BATCH PLANT

Whether for a temporary installation, a special project or for a permanent facility, the **EG-10 MX mobile concrete batch plant by BMH Systems** is designed for optimal performance and reliability.

Our exclusive mobile plant needs no concrete foundation and is ready for use in a snap. This economical system makes no compromise on quality, versatility or performance. All components used in our mobile plant are designed from the start to perform with outstanding results. In the long run it means minimum maintenance, less downtime and better access for servicing.

Innovative mobile plants

- Low profile high mobility
- Easy and quick set-up time
- Heavy duty frame
- Factory tested
- Available with the RollMaster® mixer and a twin shaft mixer

Options

- RollMaster® reversing drum mixer up to 12 yd³ (9 m³) or a twin shaft mixer, up to 6 yd³ (4.5 m³) complete with steel structure, service platform, safety guards and access stairway
- Mobility system for RollMaster® or a twin shaft with telescopic platform and safety guards
- RollMaster® or a twin shaft mixer weather enclosure
- Emergency motors
- Computerized batch control system
- Moisture probe
- Auxiliary cement silos
- Mobility system for auxiliary silos
- Dust collection system
- Safety guard

Features

- Batch plant production capacity up to 200 yd³/h dry (150 m³/h) and up to 250 yd³/h (190 m³/h) with a mixer.
- Low profile and high mobility batch plant
- Easy and quick set-up time
- No foundation/erection required, blocking only
- Telescopic legs
- Aggregate bin, 4 compartments, 110 tons (100 metric tons)
- Direct front end loader charging of aggregates
- Cement bin, single compartment, 60 tons (55 metric tons)
- Cement bin aeration system
- Electromatic high and low level sensors, capacitance type
- Screw conveyors, 12" diameter (300 mm)
- Air compressor, 15 hp (11 kW)
- Aggregate belt conveyor, 42" (1 100mm) ribbed belt
- Aggregate and cement scales, 12 yd³ (9 m³)
- Water meter, 4" (75 mm)
- Power panel
- Heavy duty frame, triple axle, radial tires
- Pneumatic suspension, ABS brakes, lights and standard fifth wheel/king pin towing assembly
- Macropoxy primer with Shertane urethane nickel gray paint; safety yellow for safety equipment
- Factory wired, plumbed and tested

Batching Control

- Manual panel

Electrical Power

- Power panel 460 or 575 volts
- Other voltage available upon request

Travel Dimensions

- 65'-3" (19,9 m) long
- 14' (4,3 m) wide
- 14'-5" (4,4 m) high

Weight

- 78,500 lb (35 600kg)



BMH Systems reserves the right to incorporate our latest designs and material changes without notice or obligation. Design features, materials of construction and dimensional specifications as described in this brochure are provided in this brochure for information only.

Certified drawings are available upon request.