
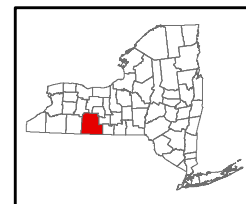


Baron Winds Project

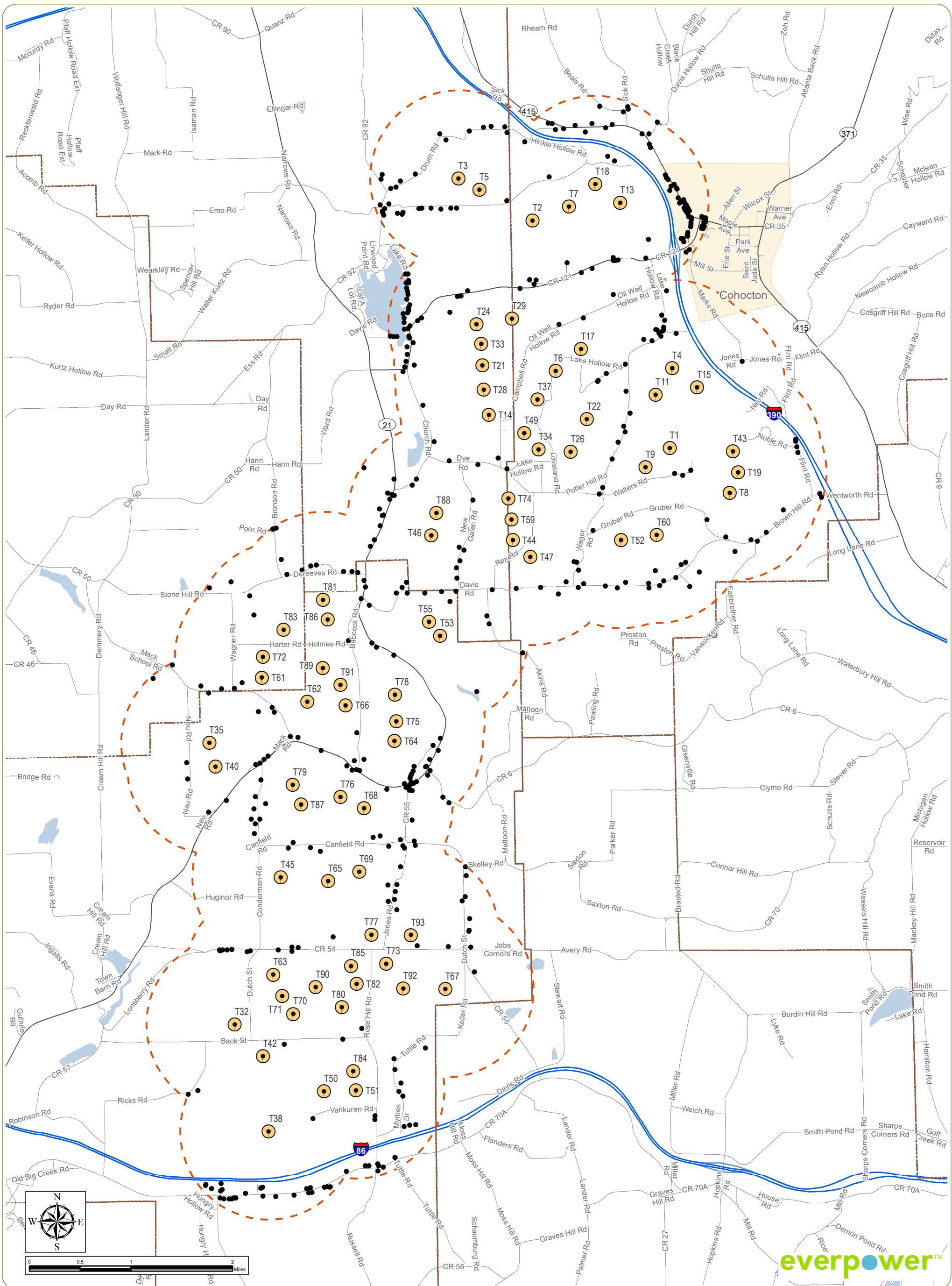
Towns of Cohocton, Dansville, Fremont, and Wayland,
Steuben County, New York

Figure 1: Regional Project Location

 1,400-meter Study Area



Notes: 1. Basemap: ESRI ArcGIS Online "World Shaded Relief" Map Service and ESRI StreetMap North America, 2008. 2. This map was generated in ArcMap on October 11, 2017. 3. This is a color graphic. Reproduction in grayscale may misrepresent the data.



Baron Winds Project

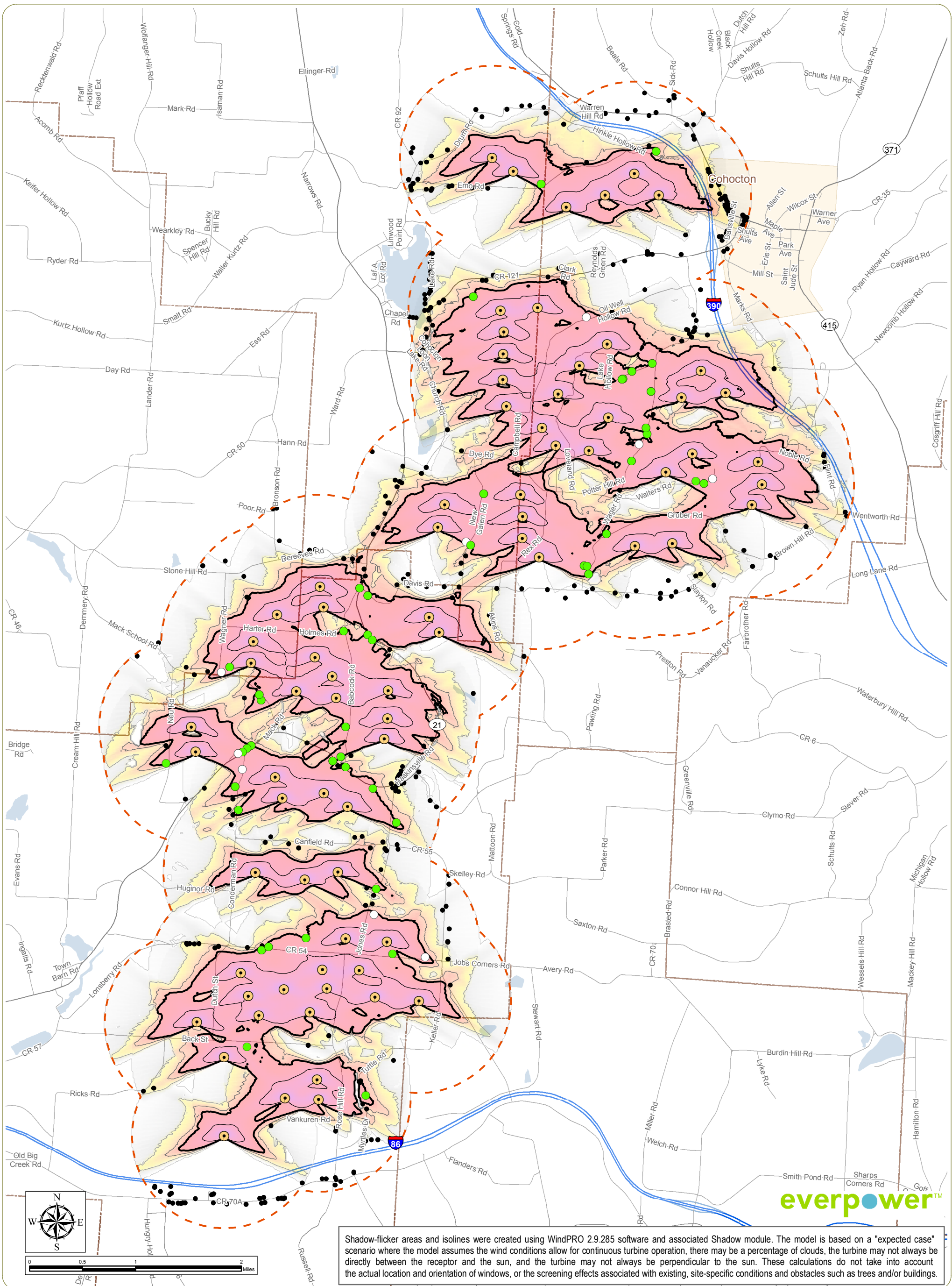
Towns of Cohocton, Dansville, Fremont, and Wayland,
Steuben County, New York

Figure 2: Proposed Turbine Layout

- Receptor
- Wind Turbine
- 1,400-meter Study Area

Notes: 1. Basemap: ESRI Streetmap North America, 2008.
2. This map was generated in ArcMap on October 11, 2017.
3. This is a color graphic. Reproduction in grayscale may misrepresent the data.





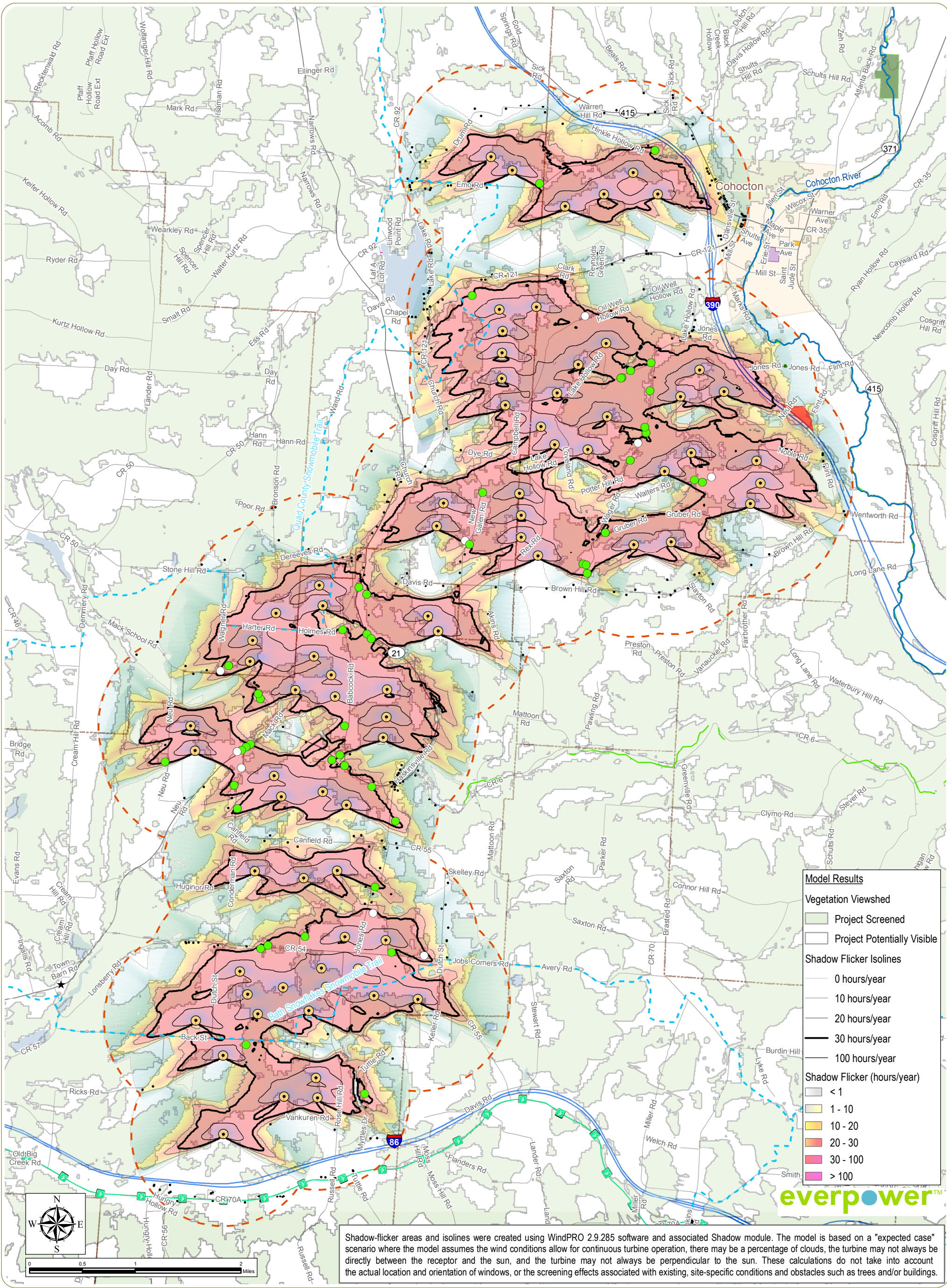
Shadow-flicker areas and isolines were created using WindPRO 2.9.285 software and associated Shadow module. The model is based on a "expected case" scenario where the model assumes the wind conditions allow for continuous turbine operation, there may be a percentage of clouds, the turbine may not always be directly between the receptor and the sun, and the turbine may not always be perpendicular to the sun. These calculations do not take into account the actual location and orientation of windows, or the screening effects associated with existing, site-specific conditions and obstacles such as trees and/or buildings.

Baron Winds Project
 Insert Town - County, State
Figure 3: Projected Shadow Flicker

Notes: 1. Basemap: ESRI Streetmap North America, 2008.
 2. This map was generated in ArcMap on October 31, 2017.
 3. This is a color graphic. Reproduction in grayscale may misrepresent the data.

- | | | |
|---|-------------------------|-----------------------------|
| ● Receptors < 30 hours/year | Shadow Flicker Isolines | Shadow Flicker (hours/year) |
| ○ Participating Residence > 30 hours/year | — 0 hours/year | □ < 1 |
| ● Non-Participating Residence > 30 hours/year | — 10 hours/year | □ 1 - 10 |
| ● Wind Turbine | — 20 hours/year | □ 10 - 20 |
| — 1,400-meter Study Area | — 30 hours/year | □ 20 - 30 |
| | — 100 hours/year | □ 30 - 100 |
| | | □ > 100 |





Baron Winds Project
 Towns of Cohocton, Dansville, Fremont, and Wayland,
 Steuben County, New York

Figure 4: Project Visibility & Potential Impact on Recreational Areas

Notes: 1. Basemap: ESRI Streetmap North America, 2008.
 2. This map was generated in ArcMap on October 31, 2017.
 3. This is a color graphic. Reproduction in grayscale may misrepresent the data.