

# 8 rules – One objective: #enjoytomorrow



## Safe Method of Work

Prior to a work task being carried out, it shall be assessed to identify hazards and to ensure suitable controls are put in place to prevent harm



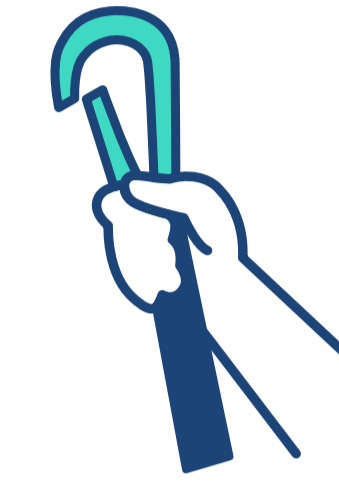
## Safety Devices & Safety Critical Equipment

No Safety device or safety critical equipment shall be tampered with, unless formal authorization has been obtained to override the safety control as part of the work planning



## Energy Isolation

Isolations and Zero energy must be applied and verified prior to a work task being commenced unless formal written authorization has been obtained



## Working At Height

When working at height with a risk of falling, fall arrest systems must be used and personal safety devices attached at all times, unless collective fall prevention systems are fitted



## Suspended Load & Exclusion Zones

No person shall work or walk under a suspended load or enter any exclusion zone without authorization



## Dropped Objects

All tools and equipment with the potential to be dropped, shall be secured or stored appropriately to prevent them from falling/being dropped and posing a hazard



## Lifting Processes

Rigging & lifting processes must be planned, controlled, and understood by all involved. Any associated lifting equipment and accessories used shall be suitable for the task, be visually inspected, have a valid test certificate and be free from defects prior to a work task being commenced



## Driving

All journeys must be planned and undertaken when drivers are only in a fit state to do so, seatbelts must be worn at all times, driving shall be responsibly undertaken and in line with weather and road conditions